

Viceroy

DOUBLE ENDED BELT

DISC SANDING MACHINE

T.D.S. 25 DOUBLE ENDED BELT AND DISC SANDING MACHINE.

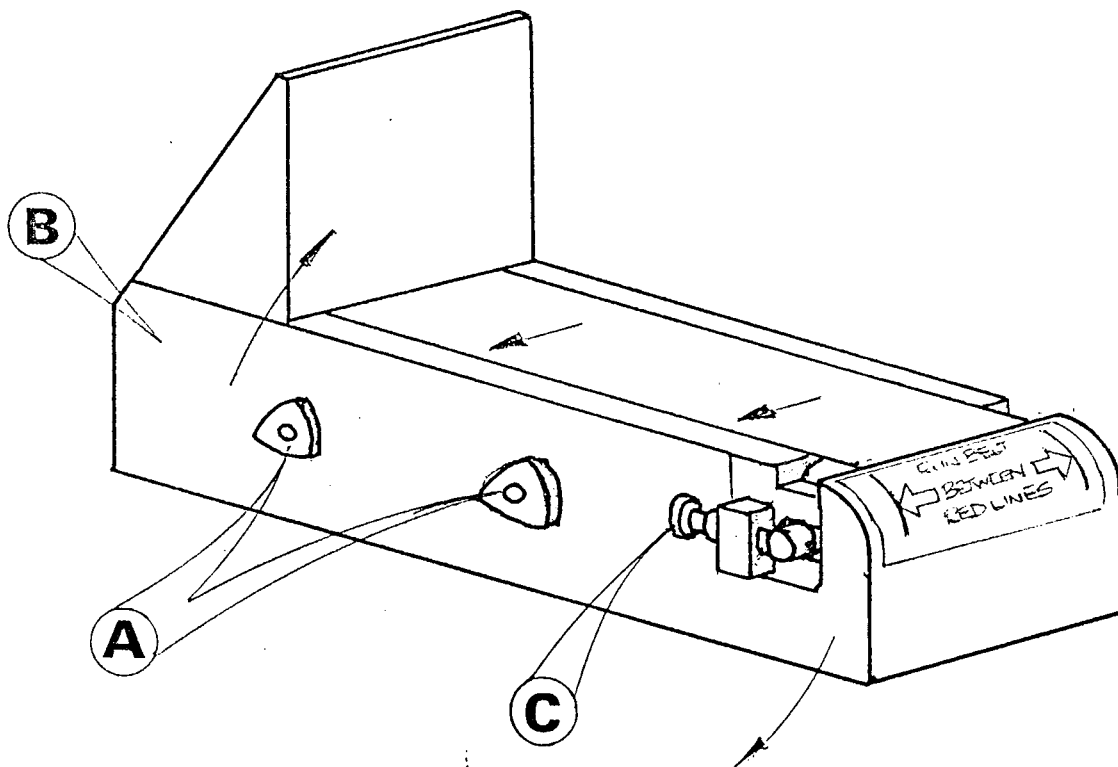
REMOVING AND REPLACING SANDING BELT.

PROCEDURE FOR REMOVAL.

- 1) Unscrew and remove the two plastic knobs (A)
- 2) Remove side plate (B) in a clockwise motion
- 3) Relieve tension on front roller by unscrewing adjusters (C), one each side.
- 4) Slide belt away front table.

PROCEDURE FOR REPLACING NEW BELT.

The replacement of the belt is the reverse procedure of the above, making sure that the arrows marked on the inside of the belt run with the direction of the belt in operation.



PROCEDURE FOR REMOVING DISC BACKPLATE

- (1) Unscrew and remove the three plastic knobs (A) then remove the top cover
- (2) Remove the four socket head cap screws (B) with a 5mm A/F key
The table can now be removed.

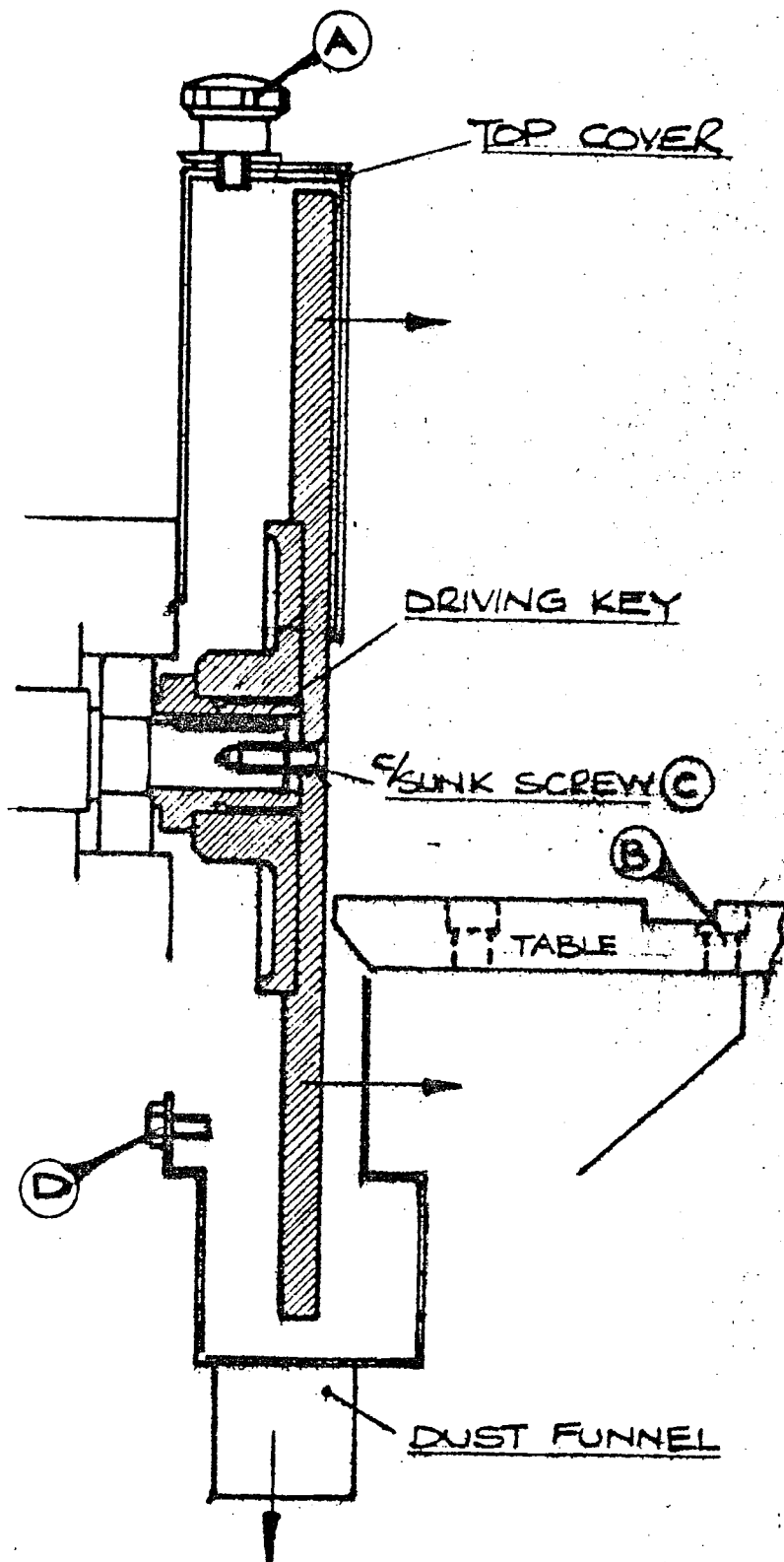
NOTE

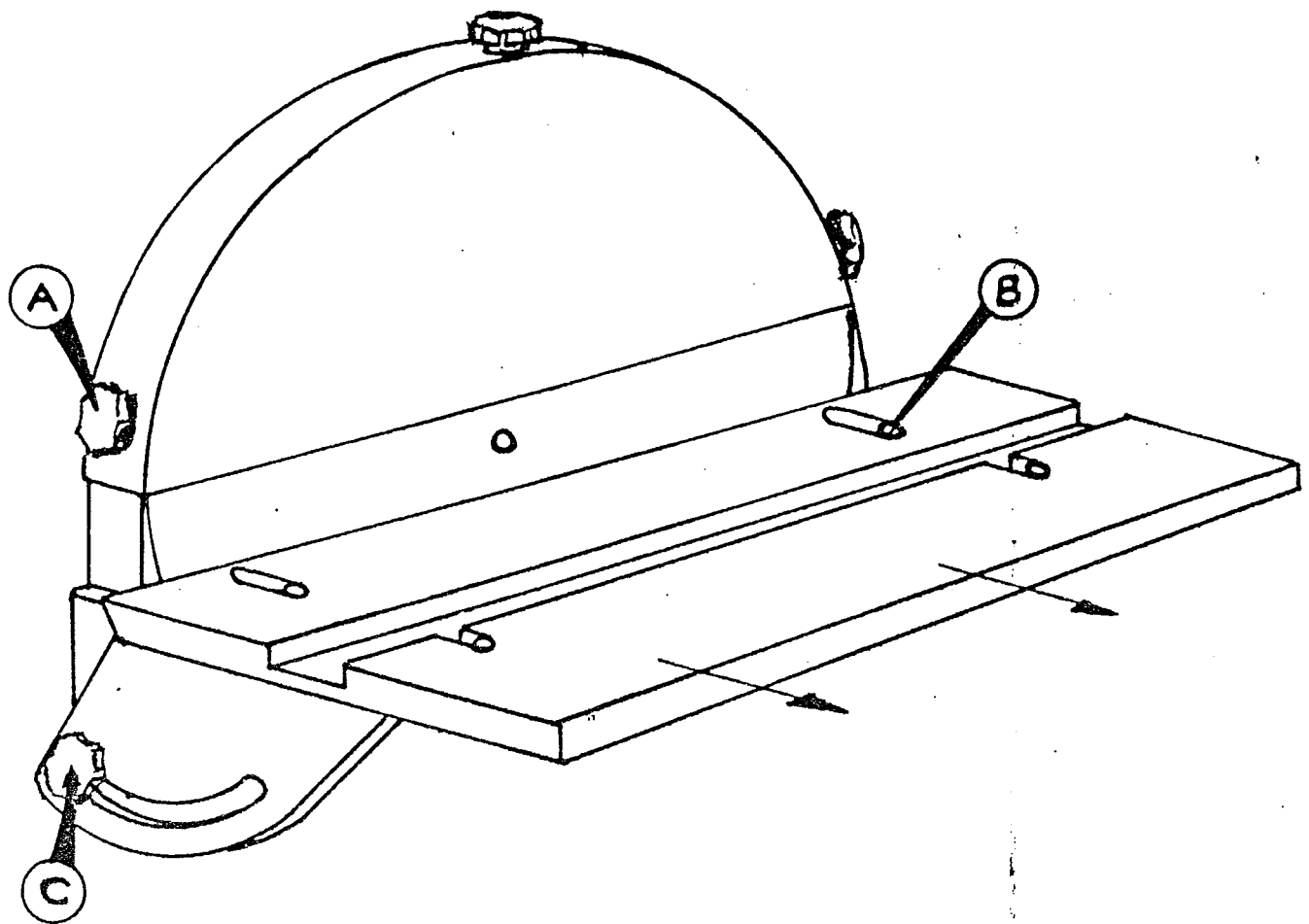
If only the replacement of an abrasive paper disc is required, the table does not have to be removed from the machine
(See instructions for disc removal)

- (3) Unscrew and remove the TWO set screws (D) (10mm spanner)
The dust funnel can then be dropped down out of position.
- (4) Unscrew and withdraw the counter-sunk screw (C) in the centre of the backplate.
- (5) The backplate can now be pulled off horizontally.

To RE-ASSEMBLE -

The reverse of the above procedure to be followed, making sure the driving key is in position.





REPLACING SANDING DISCS

PROCEDURE FOR REMOVAL OF DISC GUARDS

- (1) Release and remove the three plastic knobs (A). The top cover can then be removed
- (2) Half unscrew the four socket head cap screws (B) using hexagon socket screw wrench and pull the table away from the wheel.
- (3) The old abrasive disc can now be peeled off its backplate.

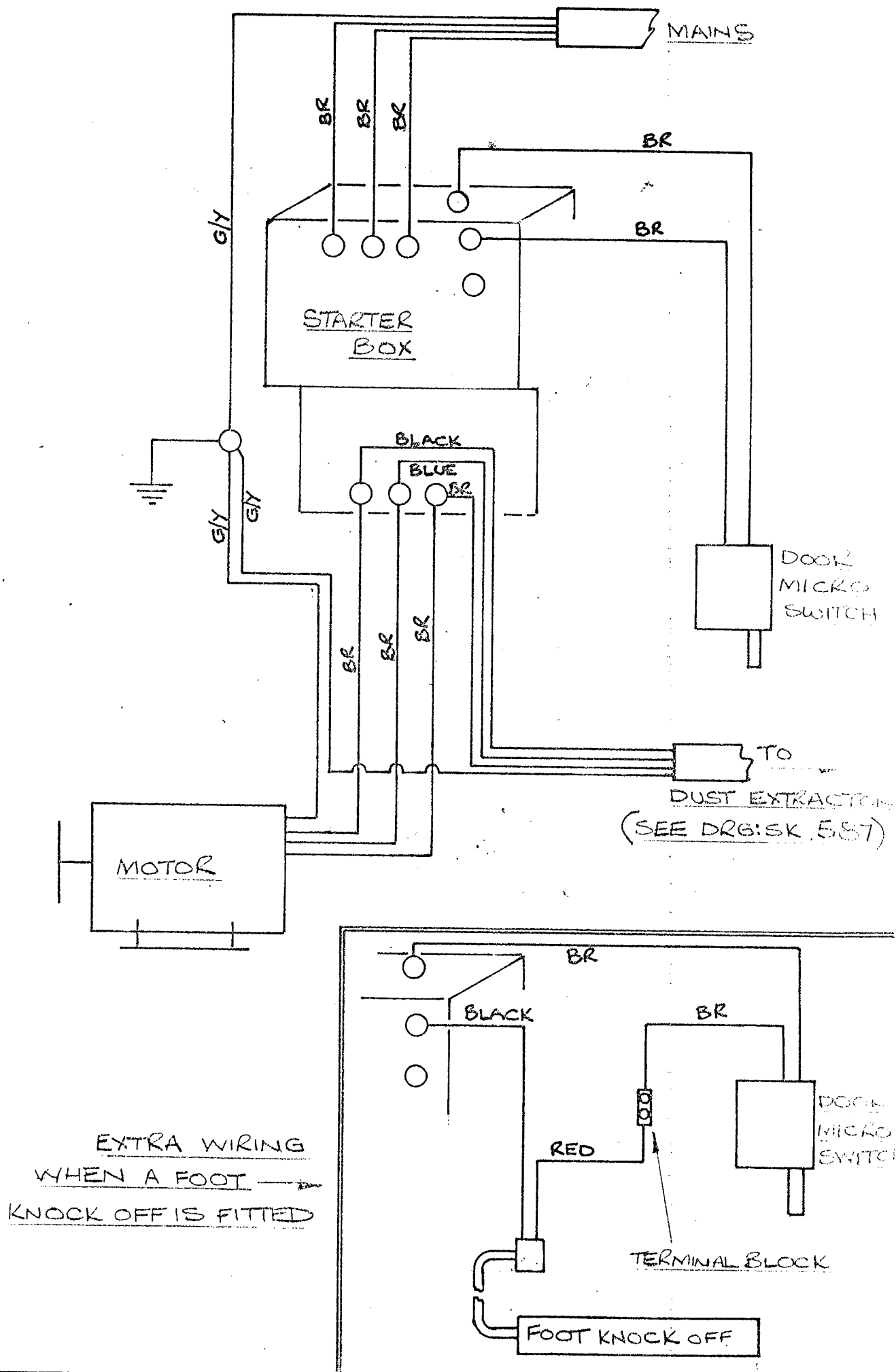
TO REPLACE SANDING DISC

A new abrasive disc may be fixed once or twice, to the aluminium backplate, without renewal of the adhesive.

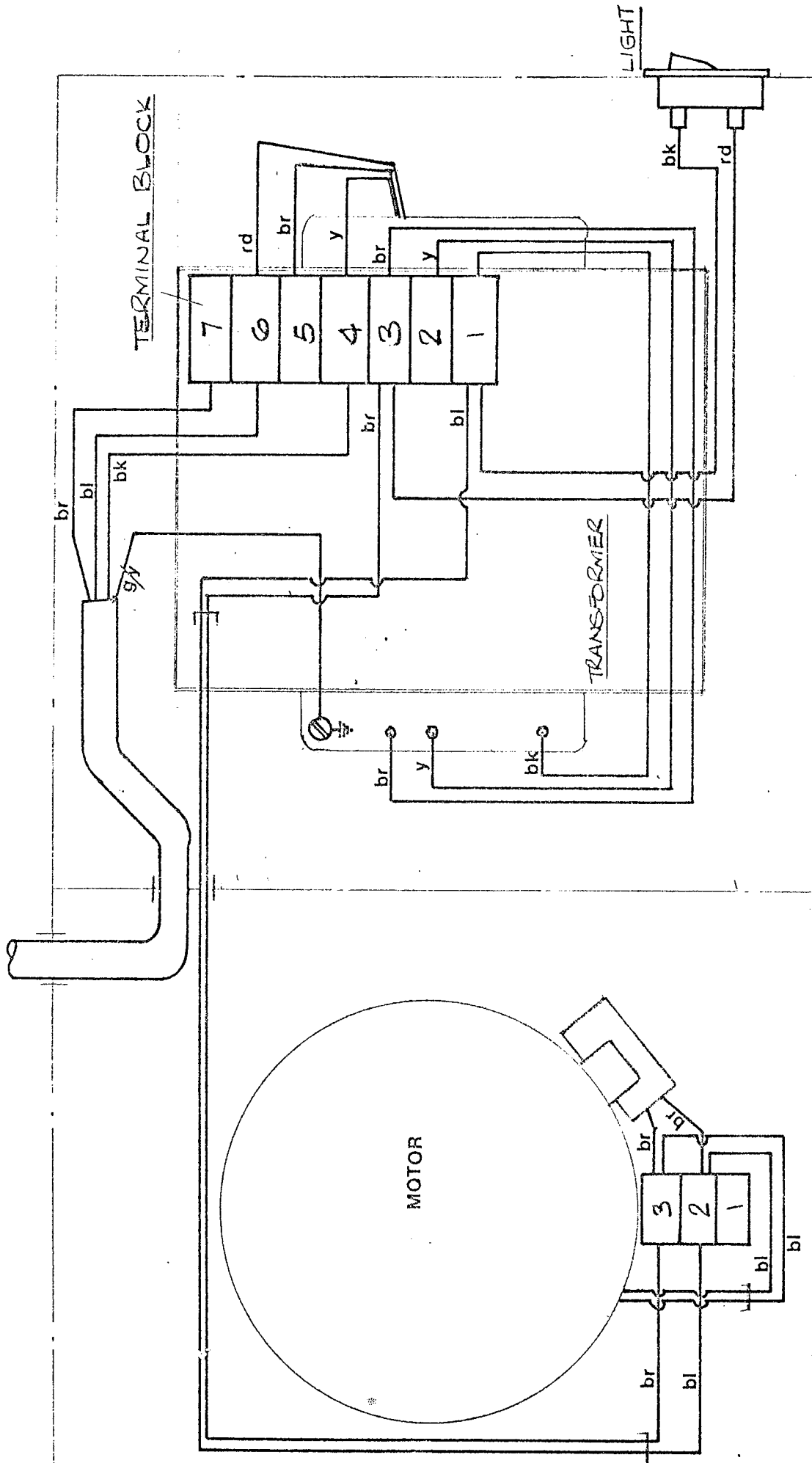
- (1) Slip the new abrasive disc down between the table and backplate, making sure it is central on the backplate. Press it on firmly by hand - this is best achieved by slowly rotating the wheel.
- (2) Reposition the table to the required setting (ensuring the face is square to the faceplate) and secure it with screws (B)
- (3) Replace top cover and the plastic knobs.

MITRE TABLE ANGLE ADJUSTMENT

- (1) Release hexagon socket screws (B) and knobs (C). Adjust to required angle then tighten knobs (C) and screws (B).



FROM MACHINE



rd - red
br - brown
bl - blue
bk - black
g/y - green/yellow
y - yellow

VICEROY EXODUS 30 - 3 PHASE WIRING DIAGRAM

DRAWN V
DATE 80.3.79

DRG N°
SK.587