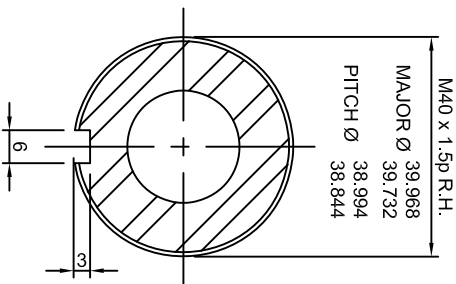


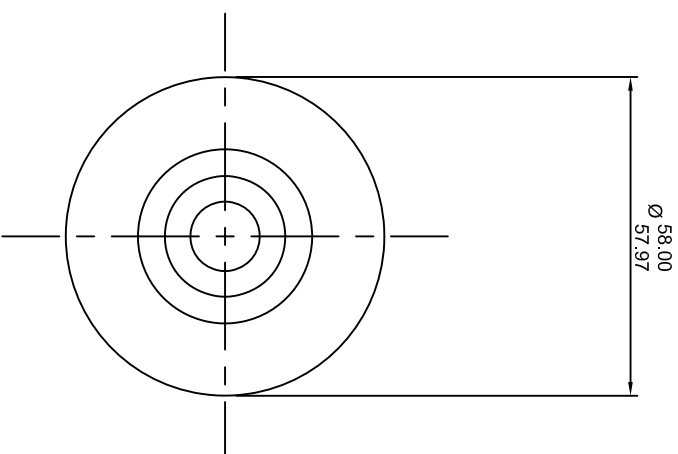
SECTION 'A-A'



SECTION 'B-B'

GAS CARBURISE WHERE SHOWN
TO A DEPTH OF 0.8mm
GRIND WHERE SHOWN
AFTER HARDENING

GIVES A MEASUREMENT
OF 1.4280" ON A 5" SINE BAR



DENFORD

COMPUTERISED MACHINES AND SYSTEMS

UNLESS STATED OTHERWISE
ALL DIMENSIONS ARE IN mm
LIMITS ON DIMENSIONS: ANGULAR $\pm 0.5^\circ$
LINEAR / DIAMETRAL ± 0.25 mm
MACHINE SURFACES Ra 1.6
ALL THREADS TO BE CLASS 6H / 6g
UNSPECIFIED GEOMETRIC TOLERANCES
TO LIE WITHIN THE TOLERANCE ZONE.

⑤	WAS 4	JBOYLE 10.02.00	5
④	DRAWING CORRECTED WAS 16.33.39"	JBOYLE 14.09.99	4
③	CHAMFER ADDED		3
②	REFERENCE TO GAUGES ADDED	JBOYLE 24.03.99	2
①	WAS 61	JBOYLE 08.12.98	1
N°	ORIGINAL ISSUE		
DRAWN	JMB	CHECKED	ISSUE
DATE	13.10.98		3 RD
SCALE	1:1		
MATERIAL	EN8		
TITLE	MAIN SPINDLE		
PART N°	RM1/715A		