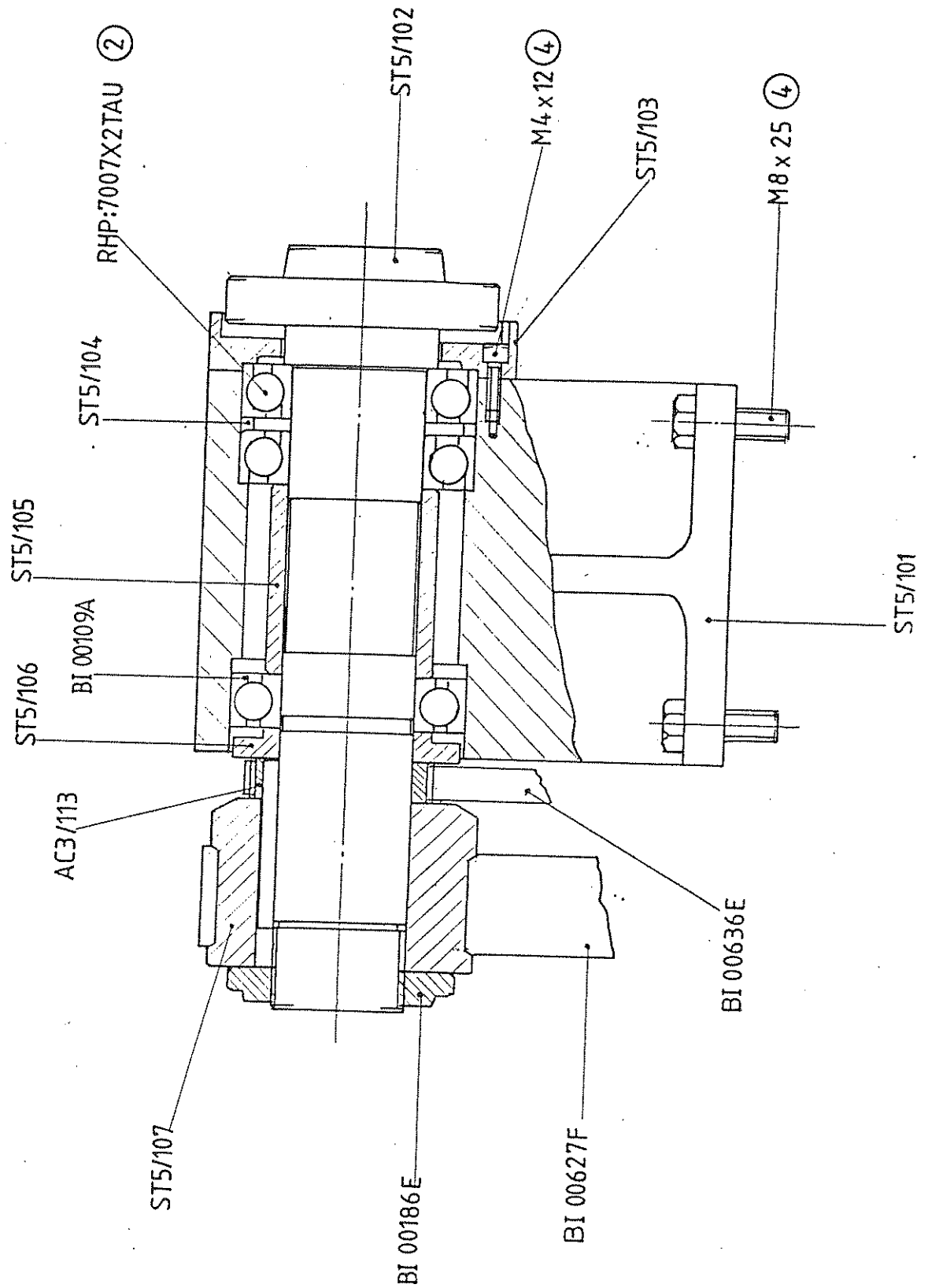
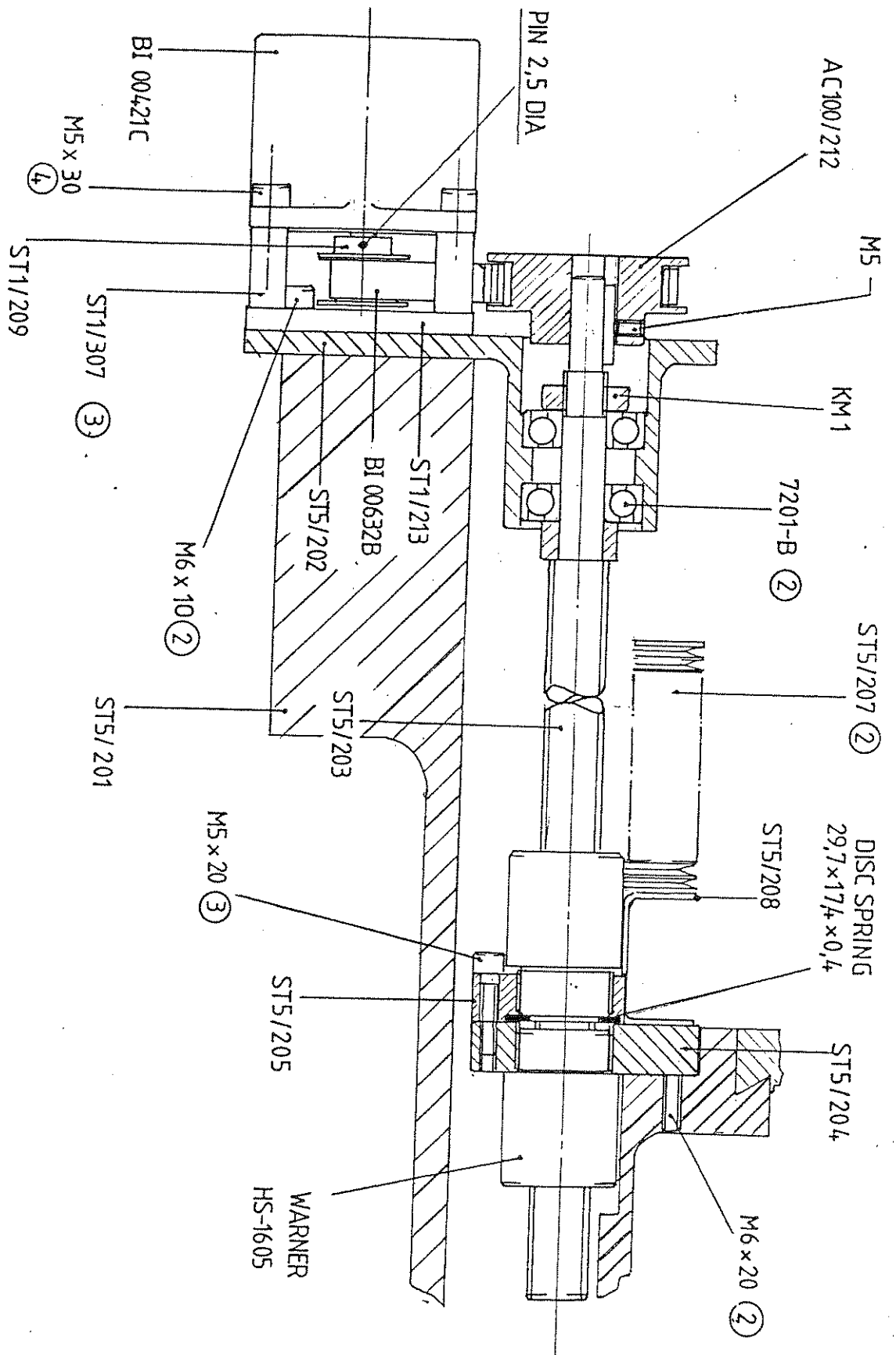

24. STARTURN PC ASSEMBLIES AND PARTS LISTS



HEADSTOCK STARTURN PC

ST5/100

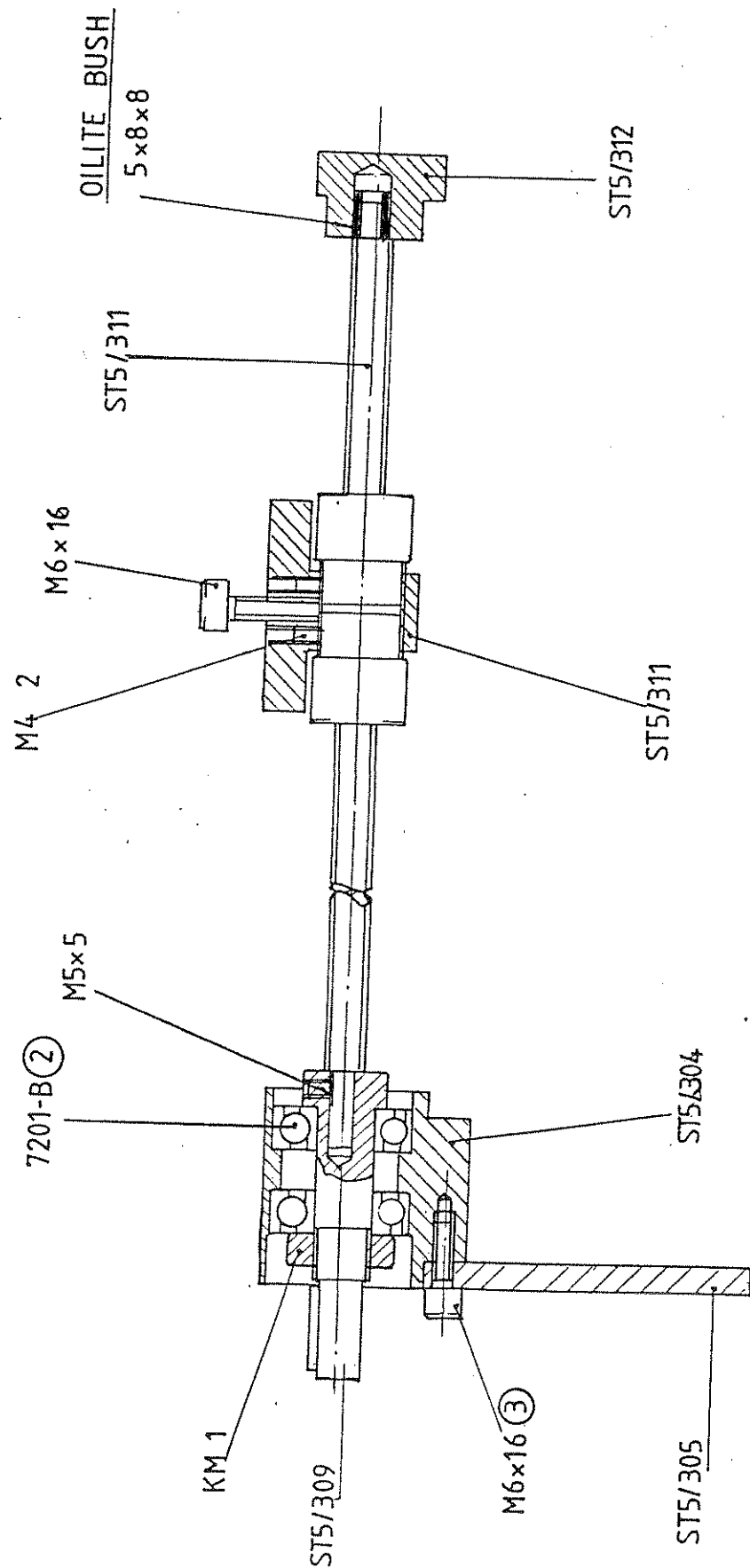
<u>PART No.</u>	<u>DESCRIPTION</u>	<u>QTY</u>
ST5/101	HEADSTOCK	1
102	MAIN SPINDLE	1
103	FRONT BEARING CAP	1
104	BEARING SHIM	1
105	SPACING SLEEVE	1
106	REAR BEARING SPACER	1
107	SPINDLE PULLEY	1
108	CHUCK BACKPLATE 80mm.	1
BI00186E	KM6 LOCKNUT	1
BI00109A	REAR BEARING	1
RHP:7007X2TAU	FRONT BEARING	2

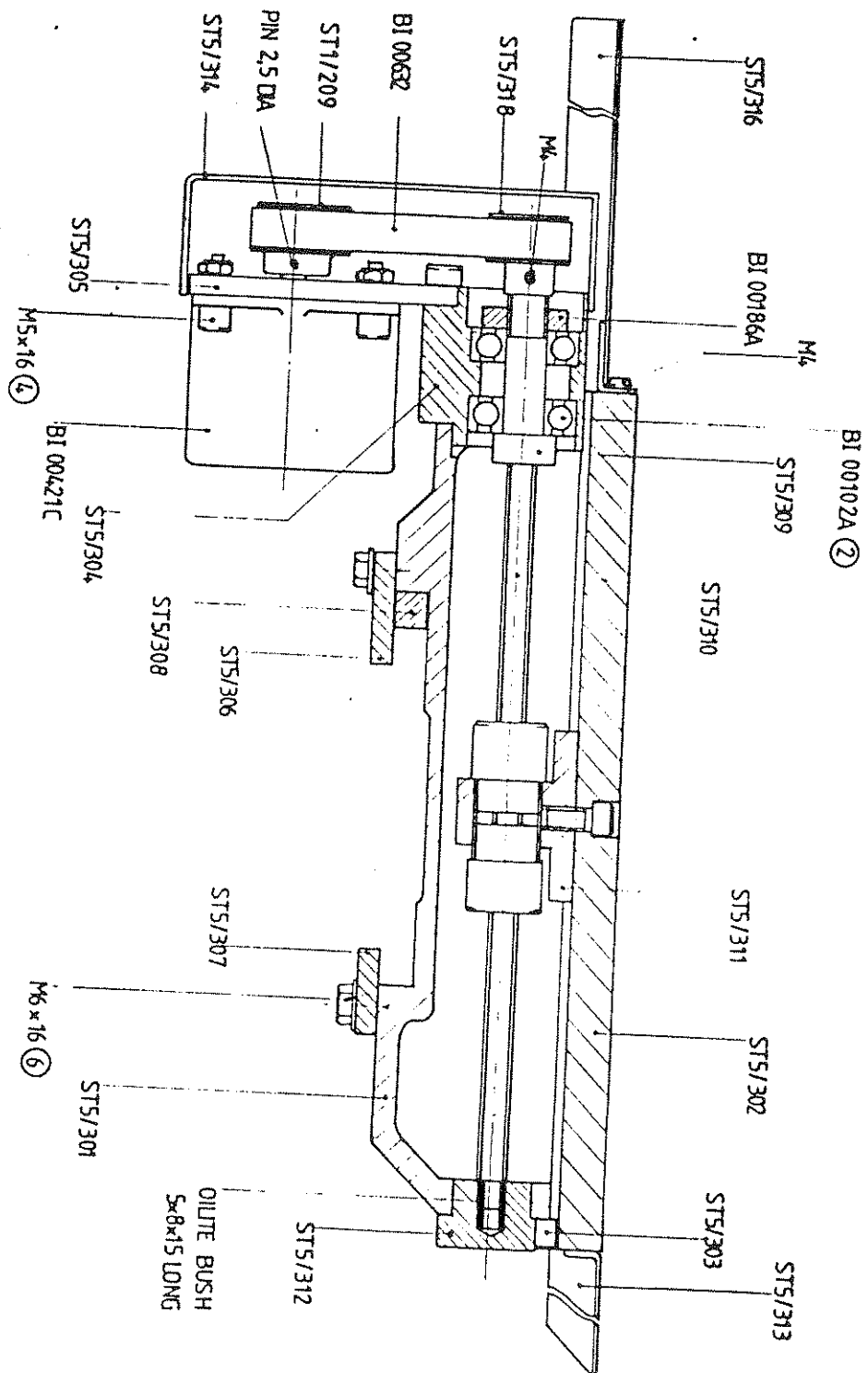


STARTURN PC BED AND SADDLE

ST5/200

<u>PART NO.</u>	<u>DESCRIPTION</u>	<u>QTY</u>
ST1/213	MOTOR PLATE S/T 4	1
307	MOTOR SPACER	3
ST5/201	BED	1
202	Z BEARING HOUSING	1
204	BALLNUT BRACKET	1
205	BALLNUT HOUSING	1
206	Z DATUM BRACKET	1
207	BED COVER	2
BI00421C	STEPPER MOTOR HY200	1
BI00381L	SENSOR BES517-399	1





STARTURN PC SADDLE AND CROSSLIDE ST5/300

<u>PART NO.</u>	<u>DESCRIPTION</u>	<u>QTY</u>
ST1/316	TOOLPOST STUD	1
ST5/301	SADDLE	1
302	CROSS SLIDE	1
303	CROSS SLIDE GIB STRIP	1
304	CROSS SLIDE BEARING HOUSING	1
305	X DRIVE BRACKET	1
306	SADDLE REAR GIB STRIP	1
307	SADDLE FRONT GIB STRIP	1
308	SADDLE TAPER STRIP	1
309	BALLSCREW ADAPTOR	1
310	CROSS SCREW BALLSCREW	1
311	BALLNUT HOUSING	1
312	FRONT SUPPORT BUSH	1
313	CROSS SLIDE FRONT COVER	1
314	X DRIVE COVER	1
315	DATUM TRIP BLOCK	1
316	CROSS SLIDE REAR COVER	1
317A	X CONNECT BOX BRACKET	1
319	X DATUM BRACKET	1
804	TENNON	1

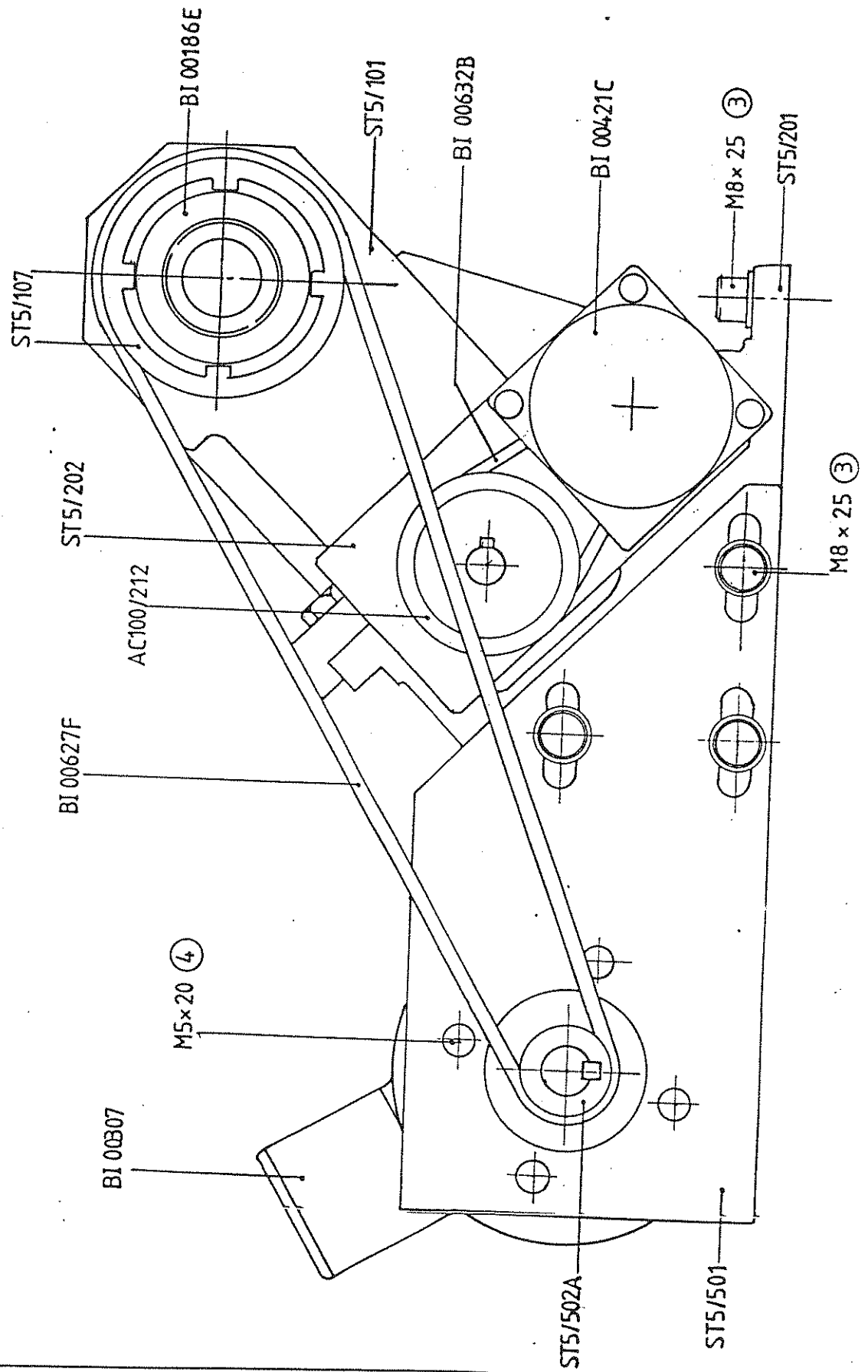
<u>PART No.</u>	<u>DESCRIPTION</u>	<u>QTY</u>
ST5/805	TOOLPOST BASE	1
BI00421C	STEPPER MOTOR HY200	1
BI00381L	SENSOR BES517-399	1
RS 502-348	ABS BOX 85X56X40GRY	1
207-200601-00	HOLE PLUG BLACK	12

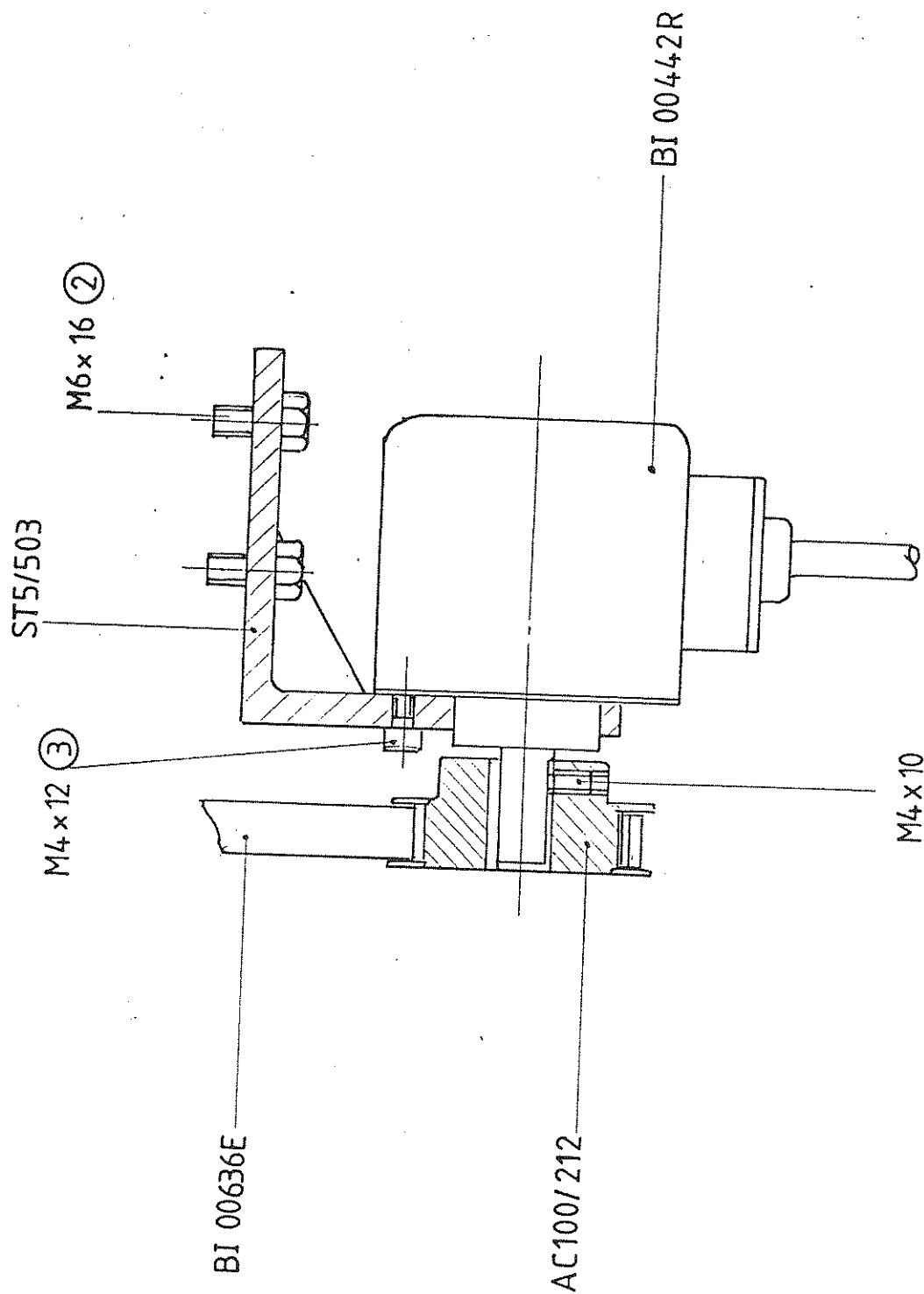
STARTURN PC CONTROL BOX

ST3/400

<u>PART No.</u>	<u>DESCRIPTION</u>	<u>QTY</u>
ST3/401	CONTROL BOX	1
ZT1/647	ISOLATOR SUPPORT	1
BI01435D	FOOT(DOOR STOP)	4
BI00432P	CHEETAH No. 2 MODULE	1
BI00432Z	CHOKE FOR DC DRIVES	1
BI00434L	S/TURN 91 CONT UNIT	1
BI00450	57.503.0053 WK2.5/32	23
BI00362CC	RELAY 11 PIN 12V DC	1
BI00362D	RELAY BASE 11 PIN	1
BI00450D	56.504.9053 EARTH	5
BI00365U	FINGER GRD. 109-091C	2
BI00365Z	FAN 109S072UL 230V	1
BI00410B	BULKHEAD FITT KFW29	1
BI00410C	ADAPT GLAND REF	1
BI00450C	07.311.0153 END SECT	7
BI00450B	Z5.522.7453 END STOP	2
BI00405Z	FLEXIBLE COND SP32	1.5mtrs
BI00406X	GLANDS 32mm -M32 -D	1
BI00406Y	ADAPTO B/PG29-M32	1
BI00366A	ISOLATOR OETL 40D1	1
BI00450A	57.910.5053 FUSE FIT	8

<u>PART No.</u>	<u>DESCRIPTION</u>	<u>QTY</u>
BI00357E	HART 09300100423	1
BI00357F	HART 09300100301	1
BI00357G	HART 09160423001	1
BI00357H	HART 09160423101	1
BI00357K	0915 - 000 - 6103 PIN	42
BI00357L	0915 - 000 - 6203 PIN	42
RS 126-590	CAPASITOR 0.1uF	2
RS 238-463	SUPPRESSOR	1
RS 470-904	CONNECTOR 25 WAY SKT	1
RS 507-905	FILTER UNIT - FAN (1)	1
FEC 105 - 357	DUST CAP	1
BI 00365D	EMER STOP KEY OPER	1



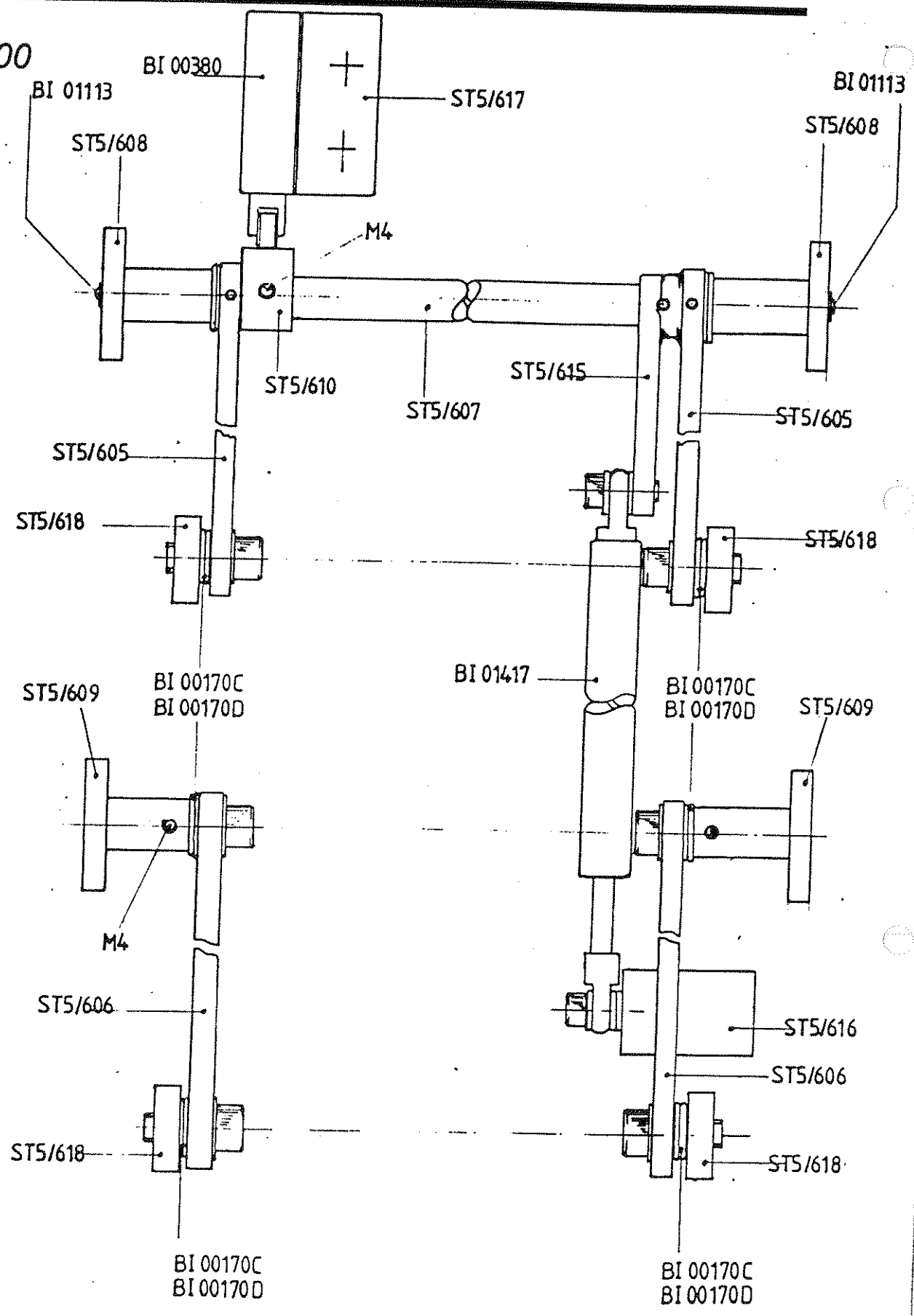


STARTURN PC SPINDLE DRIVE

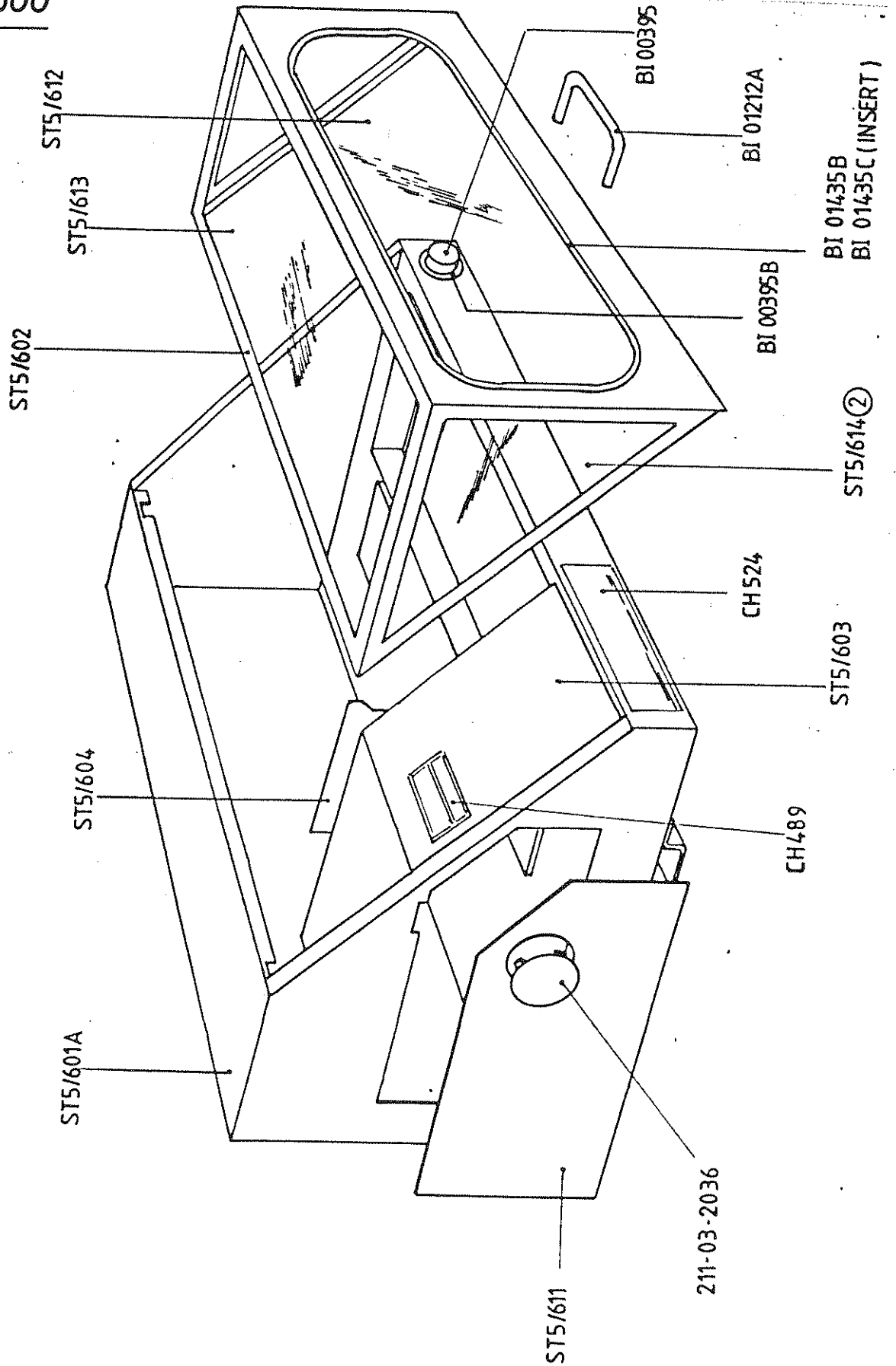
ST5/500

<u>PART NO.</u>	<u>DESCRIPTION</u>	<u>QTY</u>
ST5/501	SPINDLE MOTOR PLATE	1
502A	MOTOR PULLEY	1
503	ENCODER BRACKET	1
AC3/113	ENCODER PULLEY	1
AC100/212	30XL037 PULLEY	1
BI00307	MOTOR DC P/MAG 440W	1
BI00442R	MIRAC ENCODER	1
BI00627F	POLY-V-BELT 260 J10	1
BI00636E	TIMING BELT 140XL037	1

ST5/600



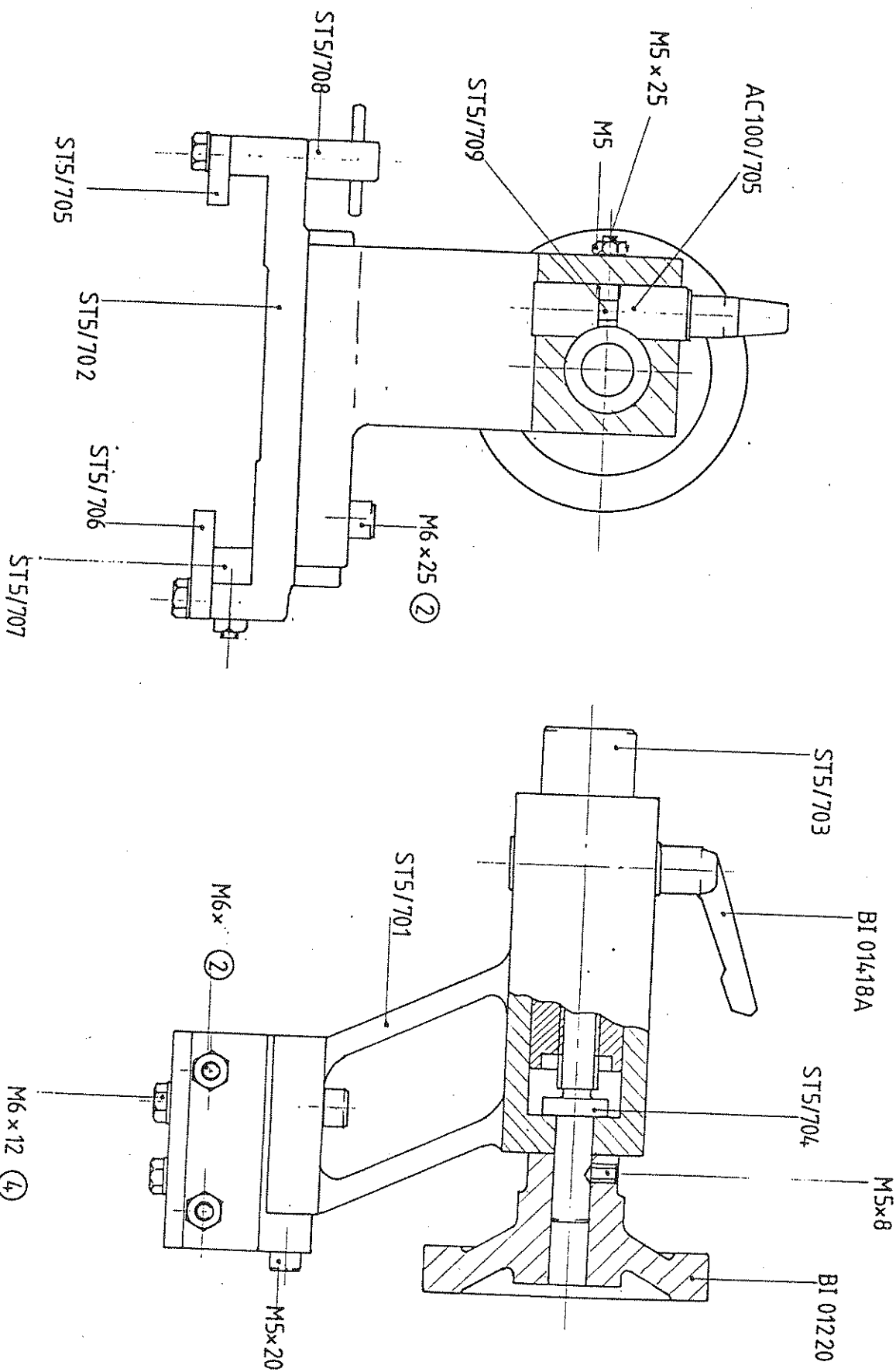
ST5/600



STARTURN PC CABINET**ST5/600**

<u>PART No.</u>	<u>DESCRIPTION</u>	<u>QTY</u>
ST5/601A	STARTURN PC CABINET	1
602	CANOPY	1
603	HEADSTOCK HOUSING	1
604	FILLER PLATE	1
605	UPPER ARM	2
606	LOWER ARM	2
607	TORSION BAR	1
608	UPPER PIVOT BUSH	2
609	LOWER PIVOT BUSH	2
610	MICRO SWITCH TRIP	1
611	DRIVE COVER	1
612	FRONT WINDOW	1
613	TOP COVER	1
614	SIDE WINDOW	2
615	LEVER	1
616	CYLINDER MOUNT	1
617	MICROSWITCH BRACKET	1
618	GUARD PIVOT BLOCK	4
BI00170C	AX816 THRUST BEARING	6
BI00170D	BEARING AX4060	6
BI00380	MICRO SWITCH KB5EQR	1

<u>PART No.</u>	<u>DESCRIPTION</u>	<u>QTY</u>
BI01212A	HANDLE ATLAS 1056 6"	1
BI01435B	IRS 736 WS WINDOW	1.5m
BI01435C	CHROME TRIM PT 02	1.5m
211 03-2036	HOLE PLUG 211032036	1
BI01417	GAS SPRING 6-150-400	1



STARTURN PC TAILSTOCK

ST5/700

<u>PART No.</u>	<u>DESCRIPTION</u>	<u>QTY</u>
ST5/701	TAILSTOCK BODY	1
702	TAILSTOCK SHOE	1
703	TAILSTOCK BARREL	1
704	BARREL SCREW	1
705	REAR GIB STRIP	1
706	FRONT GIB STRIP	1
707	LOCKING STRIP	1
708	TAILSTOCK CLAMP	1
AC100/705	BARREL CLAMPS	1SET

STARTURN PC STANDARD EQUIPMENT

<u>PART No.</u>	<u>DESCRIPTION</u>	<u>QTY</u>
RS 416-556	FUSE	2
RS 416- 528	FUSE	2
BI00851	TOOLPOST MAIN BODY	2
BI00852	ADJUSTABLE TOOLHOLDER	1
ALLEN KEYS	ALLEN KEYS METRIC	1SET
BI01448A	STARTURN PVC MANUAL	1
SPANNER	SPANNER 12/13mm O/E	1
BI01812G	CABLE IBM FANUC	1
BI01811	MULTI PURPOSE TUTOR	1
BI01811A	FANUC 2 AXIS OVERLAY	1