

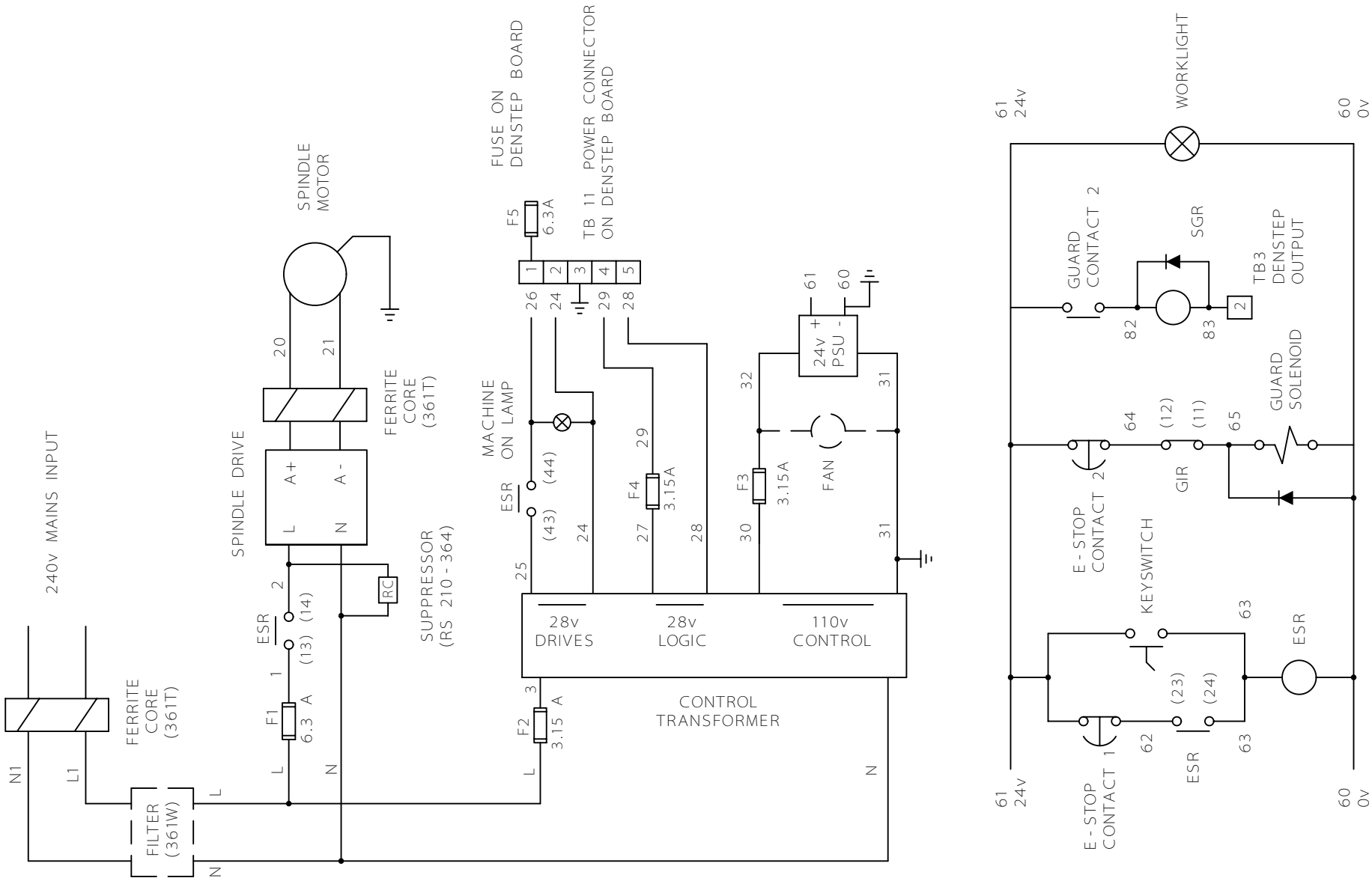
- F1 MAIN POWER
F2 TRANSFORMER
F3 FAN AND LIGHT
F4 SPINDLE DRIVE
F5 24v FROM TRANSFORMER

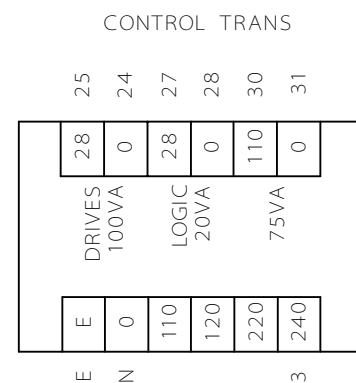
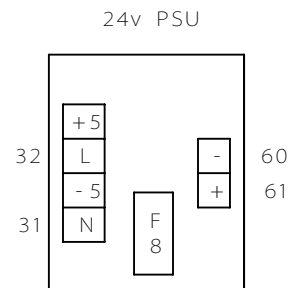
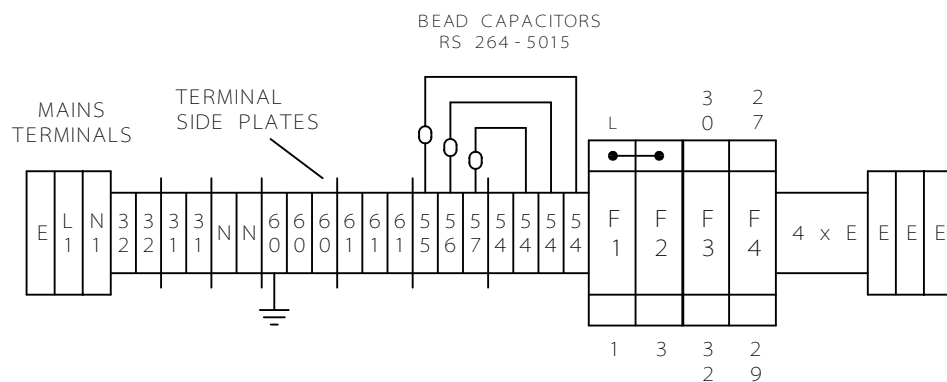
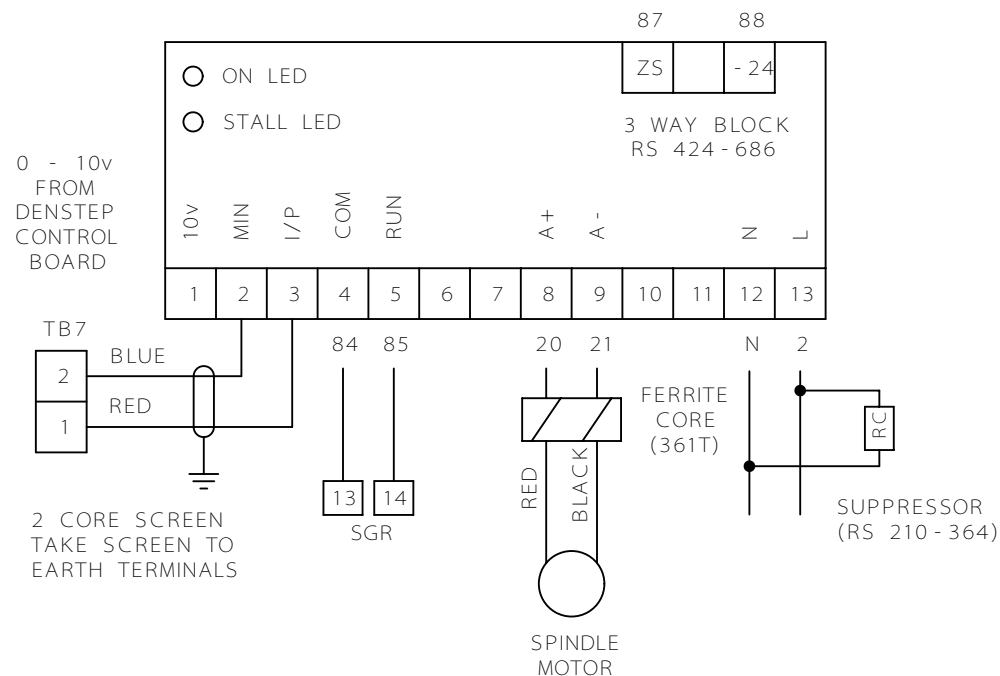
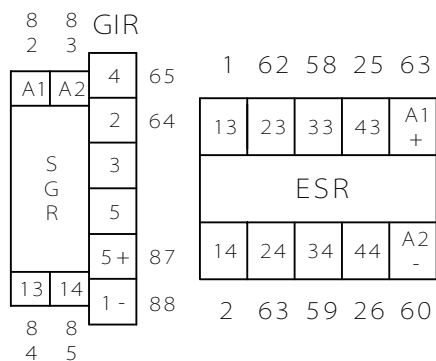
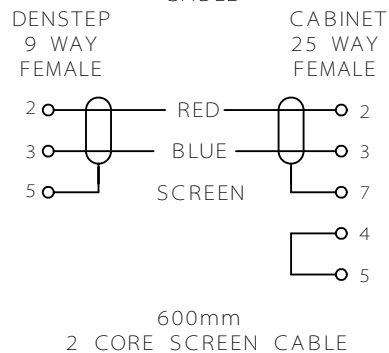
MICROMILL RELAY AND FUSE WIRING	SHEET *
	MICROMILL
	DENSTEP

IF IN DOUBT ASK

MICROMILL
POWER SCHEMATIC
DENSTEP CONTROL

SHEET 1
MICROMILL
DENSTEP



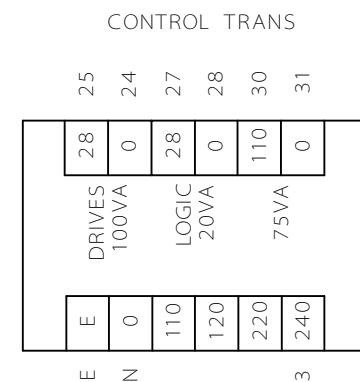
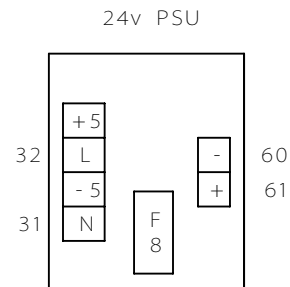
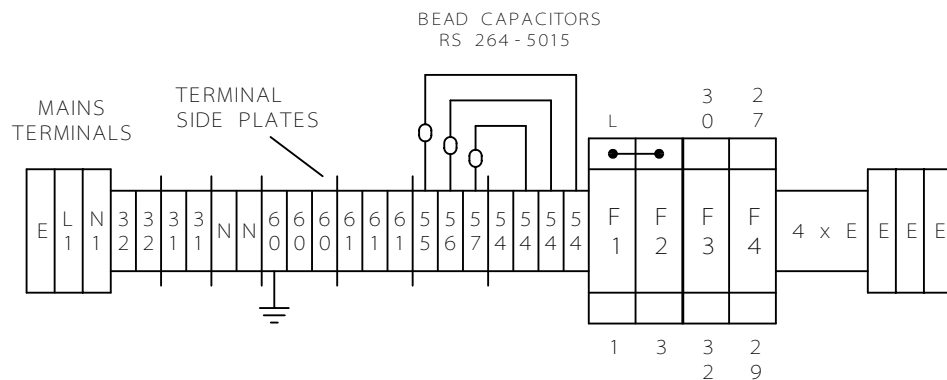
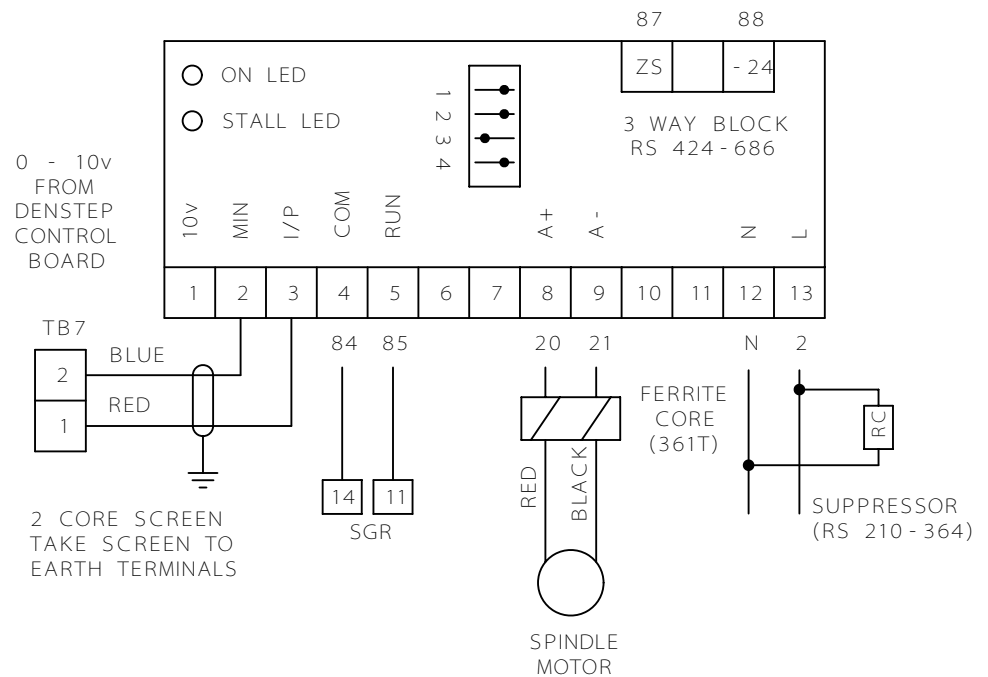
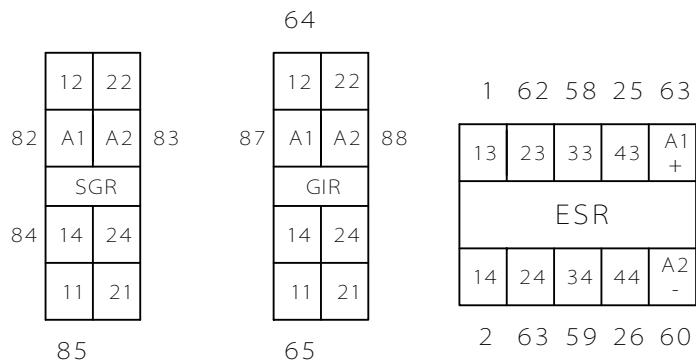


F1	SPINDLE DRIVE	6.3 AMP
F2	CONTROL TRANS	3.15 AMP
F3	110v AC CIRCUIT	3.15 AMP
F4	DENSTEP LOGIC	3.15 AMP

F5	DENSTEP BOARD	6.3 AMP
F6	SPINDLE DRIVE	16 AMP
F7	24v PSU	2 AMP

MOUNT 24v PSU DIRECTLY
ON PANEL - NOT ON DINRAIL

MICROMILL TERMINAL AND RELAY WIRING	SHEET 2
	MICROMILL
	DENSTEP



FUSES ON DINRAIL

F1 SPINDLE DRIVE 6.3 AMP

F2 CONTROL TRANS 3.15 AMP

F3 110v AC CIRCUIT 3.15 AMP

F4 DENSTEP LOGIC 3.15 AMP

FUSES ON COMPONENTS

F5 DENSTEP BOARD 6.3 AMP

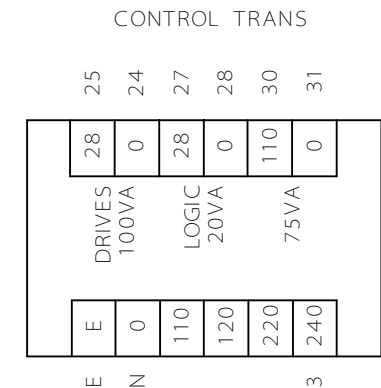
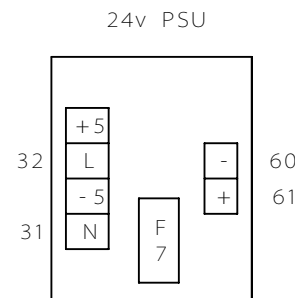
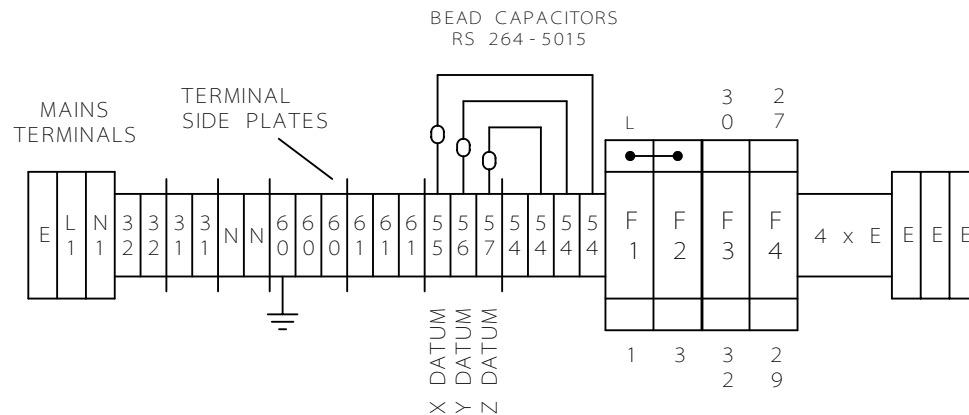
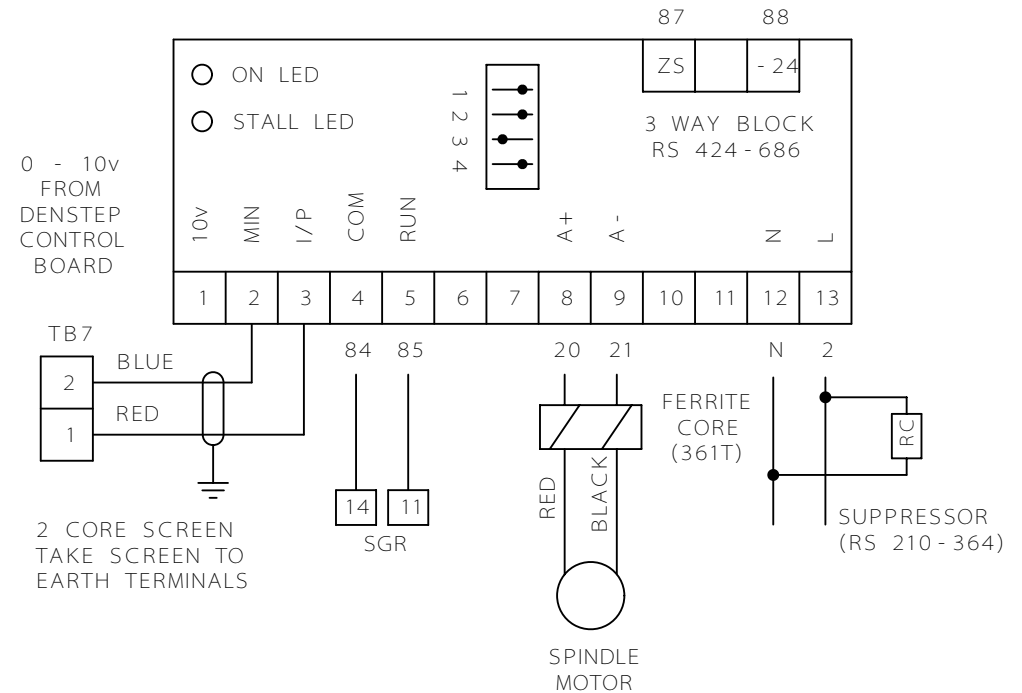
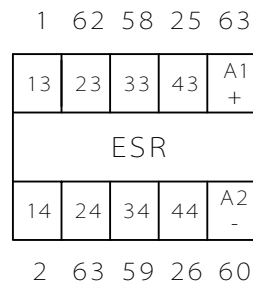
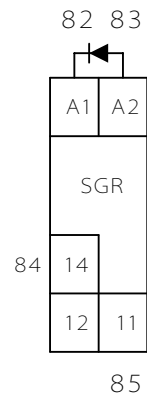
F6 SPINDLE DRIVE 16 AMP

F7 24v PSU 2 AMP

MOUNT 24v PSU DIRECTLY ON PANEL - NOT ON DINRAIL

MICROMILL
TERMINAL AND
RELAY WIRING

SHEET 2
MICROMILL
DENSTEP



FUSES ON DINRAIL

F1	SPINDLE DRIVE	6.3 AMP
F2	CONTROL TRANS	3.15 AMP
F3	110v AC CIRCUIT	3.15 AMP
F4	DENSTEP LOGIC	3.15 AMP

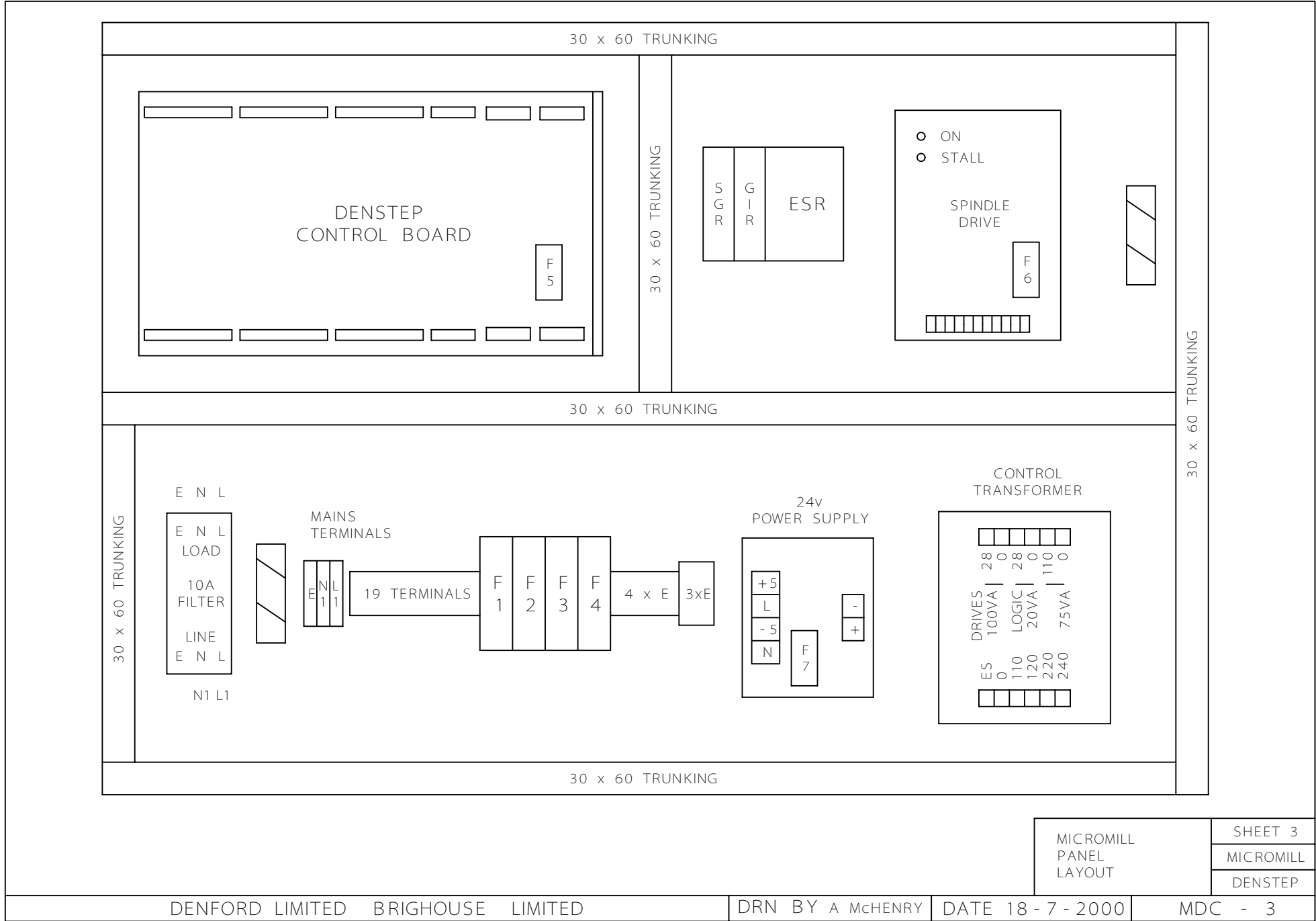
FUSES ON COMPONENTS

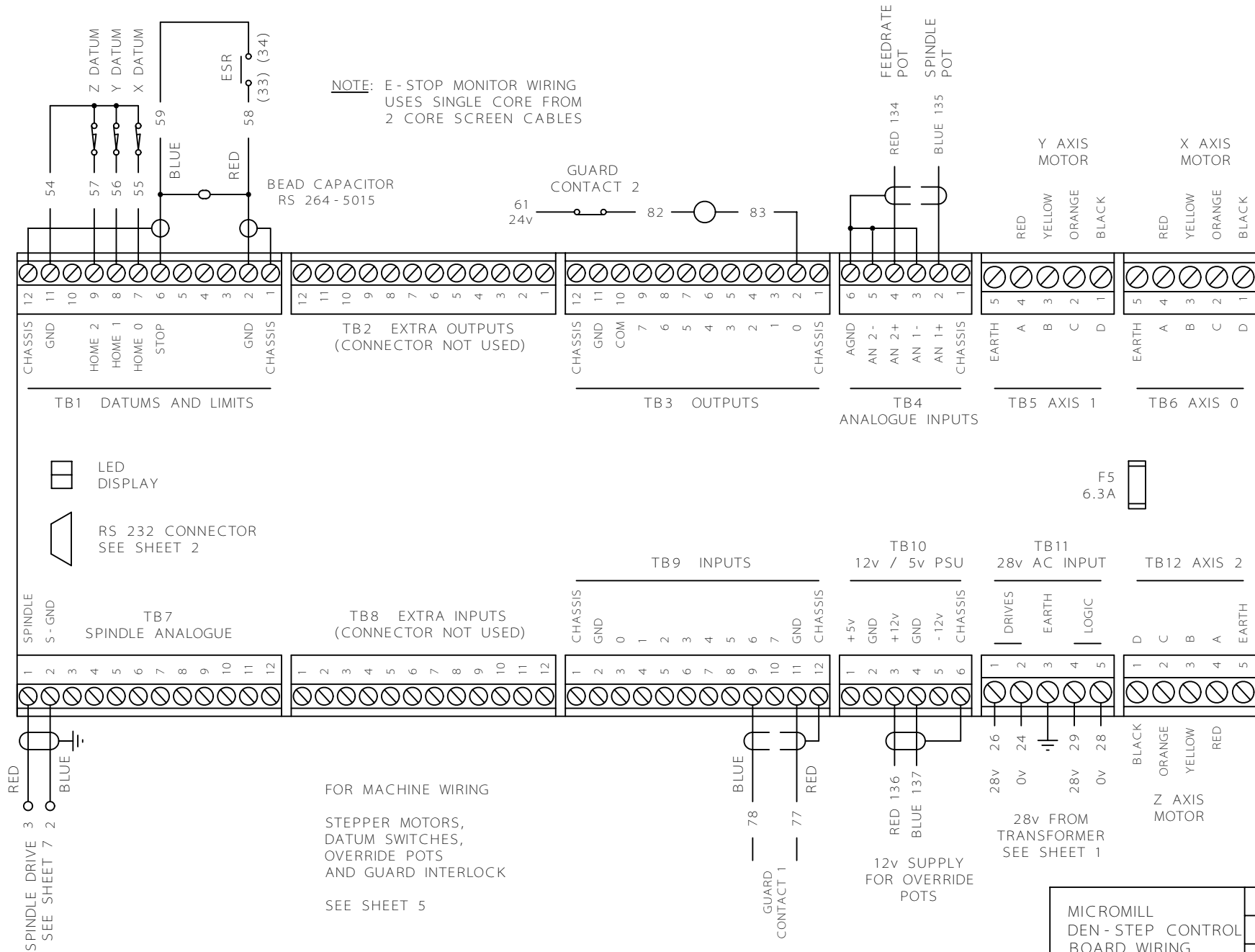
F5	DENSTEP BOARD	6.3 AMP
F6	SPINDLE DRIVE	16 AMP
F7	24v PSU	2 AMP

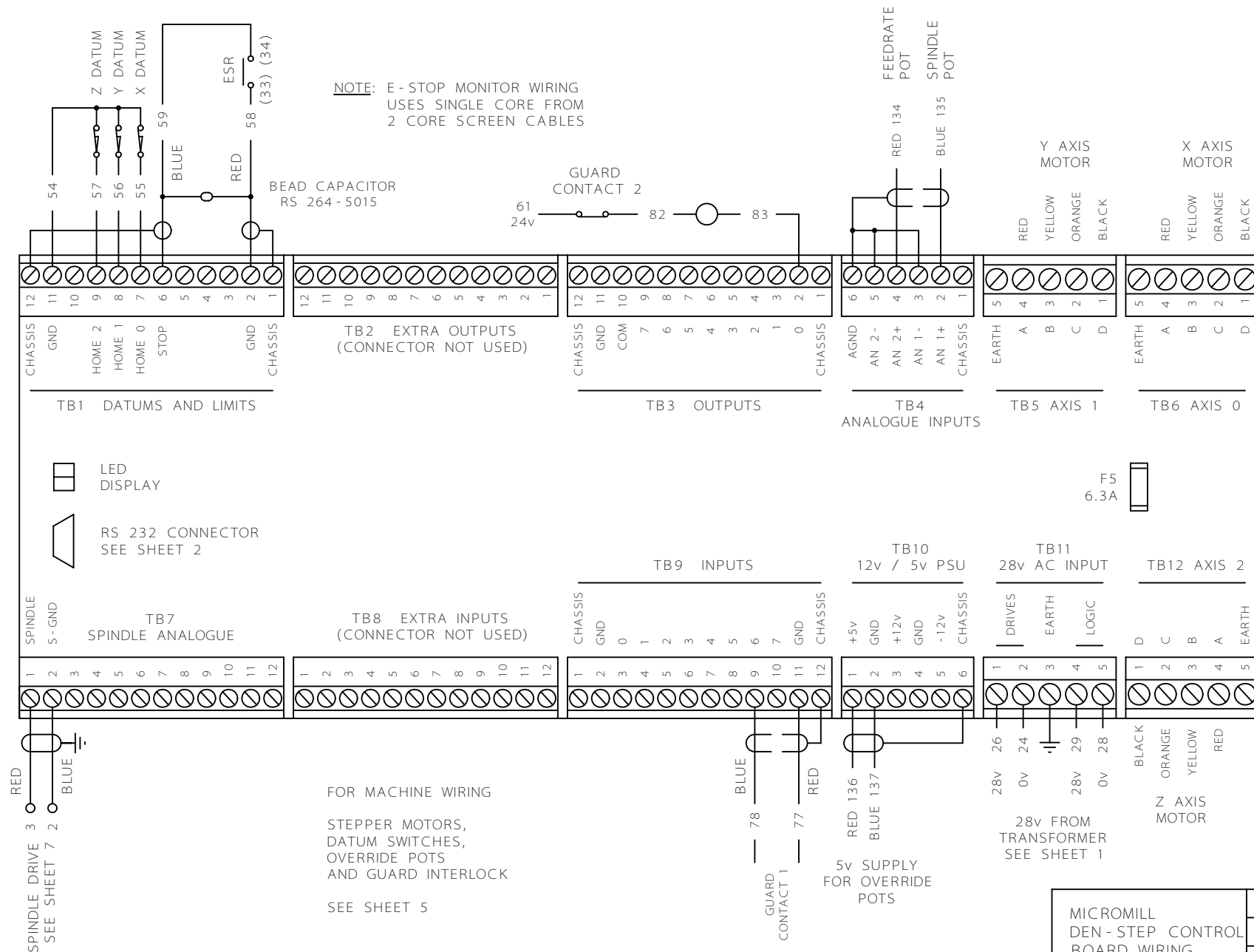
MOUNT 24v PSU DIRECTLY ON PANEL - NOT ON DINRAIL

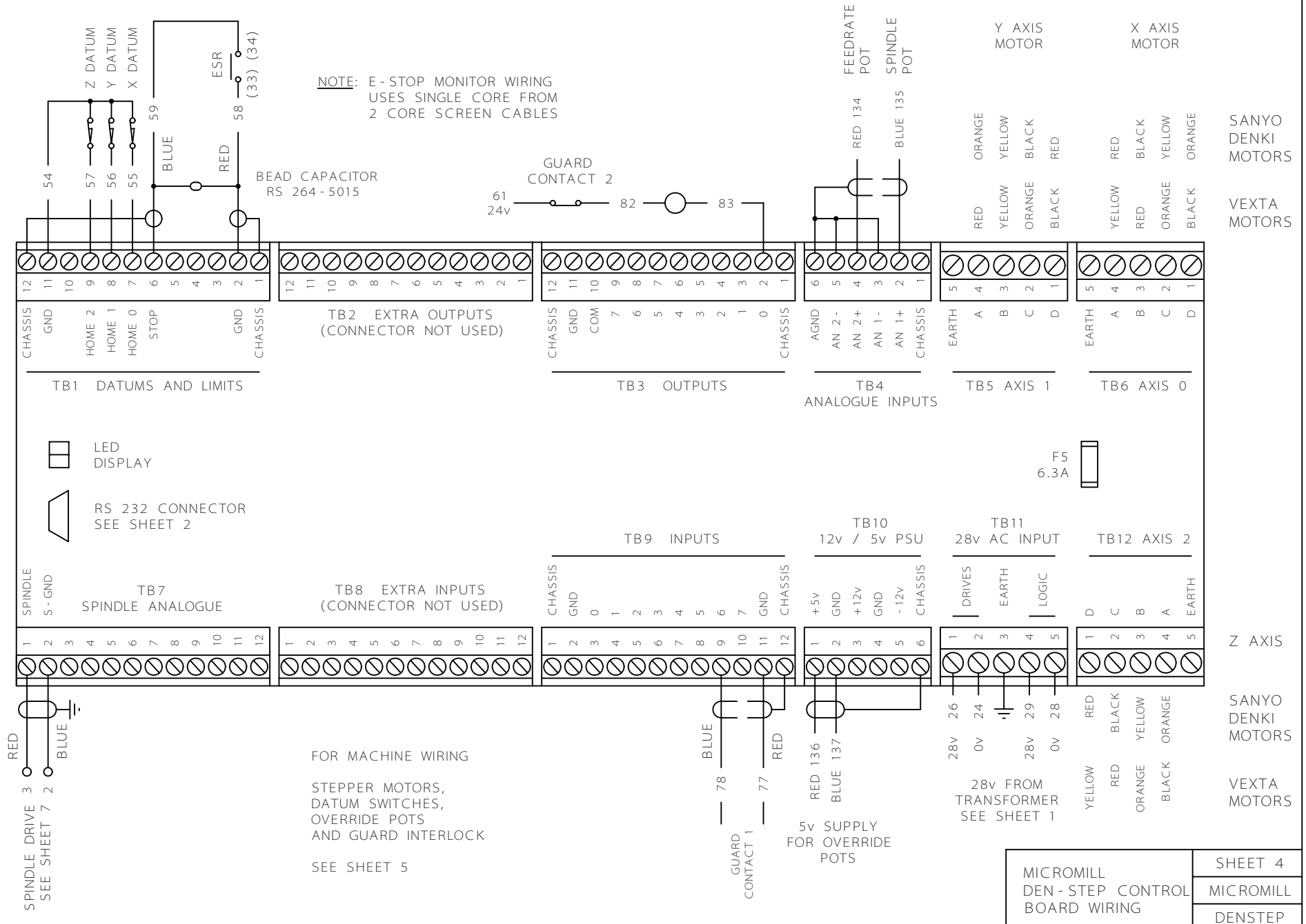
MICROMILL
TERMINAL AND
RELAY WIRING

SHEET 2
MICROMILL
DENSTEP









DENSTEP TERMINALS

TB6



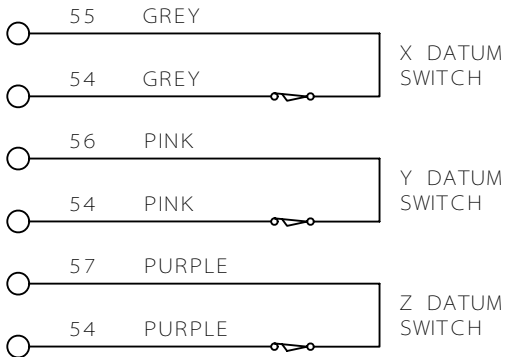
TB5



TB12

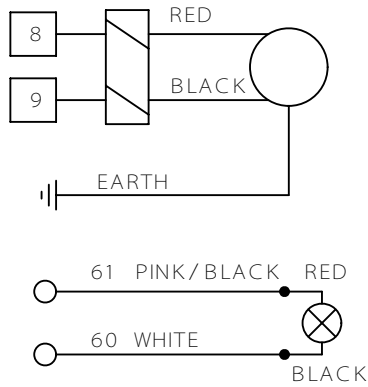


TERMINALS



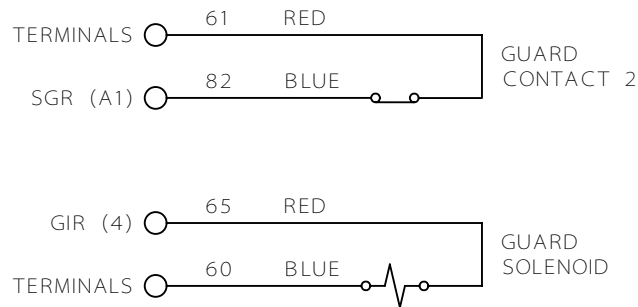
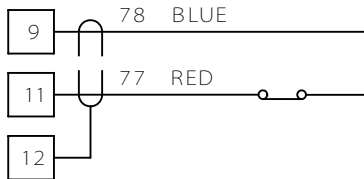
VEXTA STEPPER MOTORS

SPINDLE DRIVE



DENSTEP TERMINALS

TB9

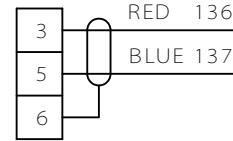


DRIVES ON KEYSWITCH

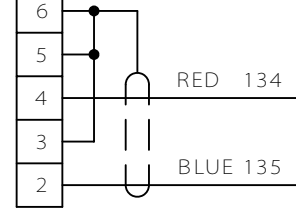


FERRITE CORE (361T)

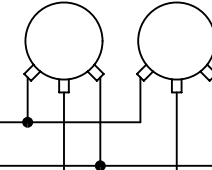
TB10



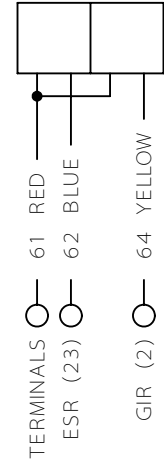
TB4



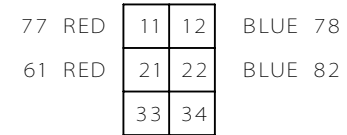
SPINDLE OVERRIDE FEEDRATE OVERRIDE



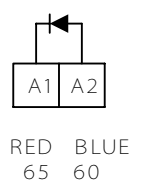
E - STOP 2 CONTACTS



GUARD SWITCH CONTACTS



GUARD SOLENOID



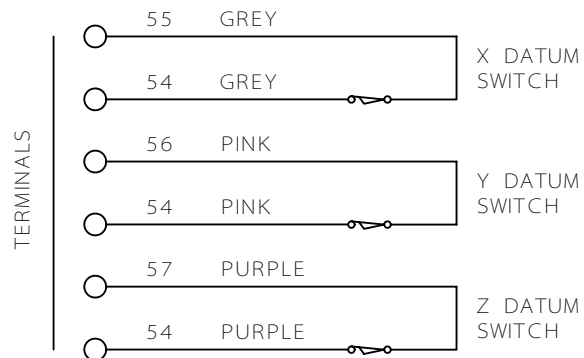
3 x 2 CORE SCREEN CABLES

MICROMILL MOTOR AND SWITCH WIRING

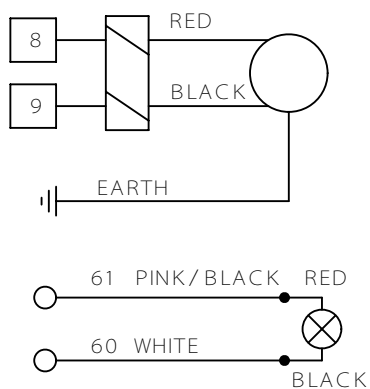
SHEET 5
MICROMILL
DENSTEP

DENSTEP TERMINALS

VEXTA STEPPER MOTORS

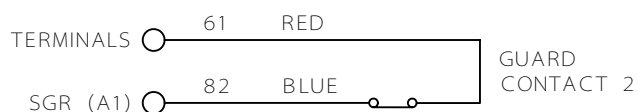
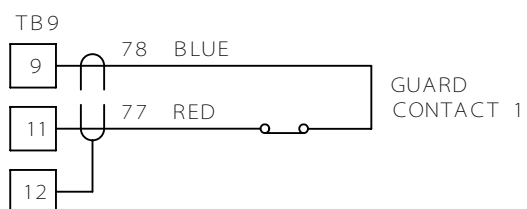


SPINDLE DRIVE

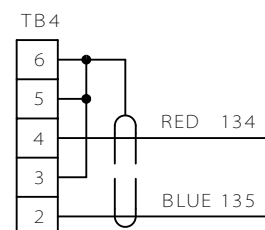
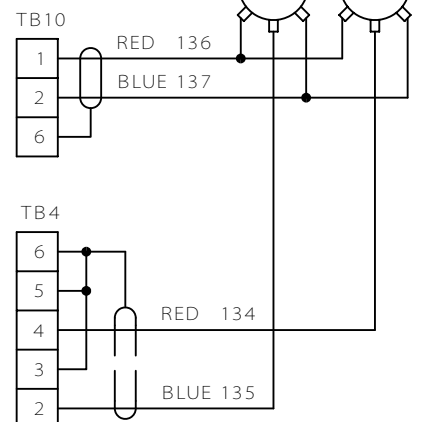


SPINDLE MOTOR 1mm SINGLES

DENSTEP TERMINALS



FERRITE CORE (361T)



DRIVES ON KEYSWITCH



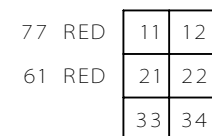
MACHINE ON LAMP



E - STOP 2 CONTACTS



GUARD SWITCH CONTACTS



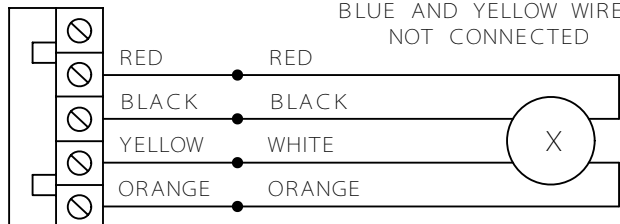
3 x 2 CORE SCREEN CABLES

MICROMILL MOTOR AND SWITCH WIRING

SHEET 5
MICROMILL
DENSTEP

DENSTEP TERMINALS

TB6



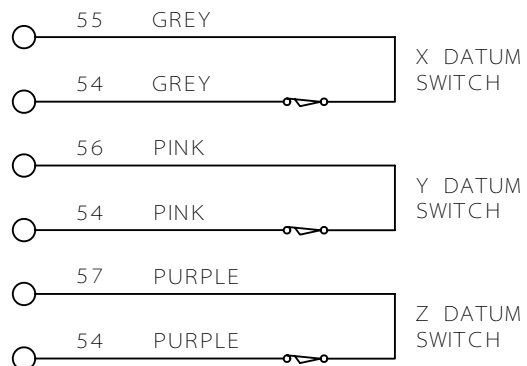
TB5



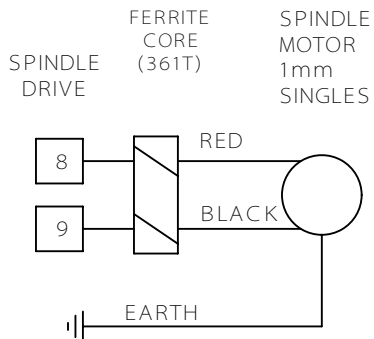
TB12



TERMINALS

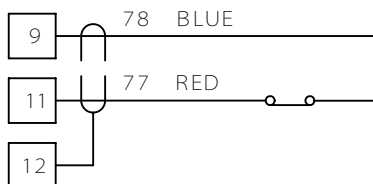


SANYO DENKI
STEPPER MOTORS
BLUE AND YELLOW WIRES
NOT CONNECTED

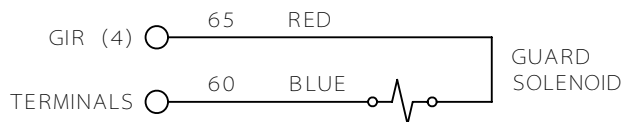


DENSTEP TERMINALS

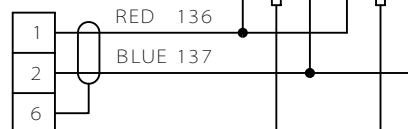
TB9



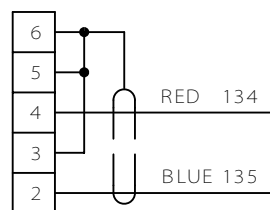
GUARD
CONTACT 1



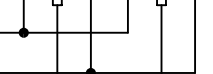
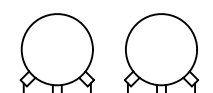
TB10



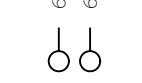
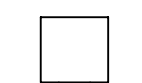
TB4



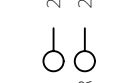
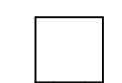
SPINDLE
OVERRIDE



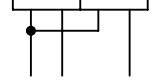
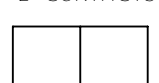
DRIVES ON
KEYSWITCH



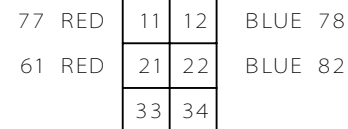
MACHINE
ON LAMP



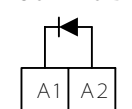
E - STOP
2 CONTACTS



GUARD
SWITCH
CONTACTS



GUARD
SOLENOID



RED BLUE
65 60

3 x 2 CORE SCREEN CABLES

MICROMILL
MOTOR AND
SWITCH
WIRING

SHEET 5
MICROMILL
DENSTEP