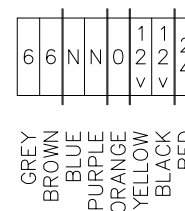
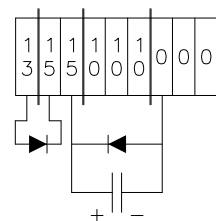
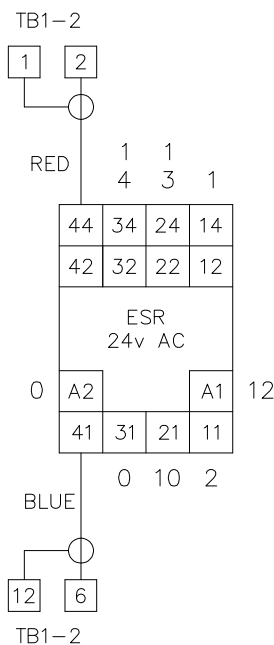
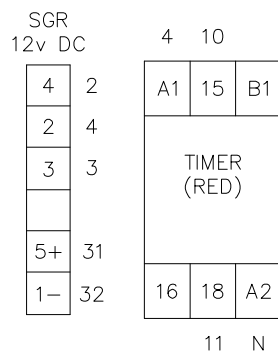
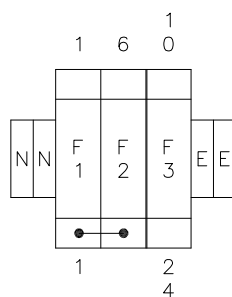
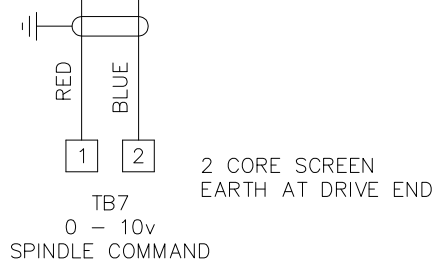
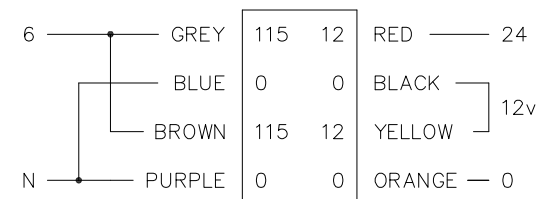


3 SUPPRESSORS REQUIRED
RS 210-364

- 3 — RC — N SPINDLE DRIVE
11 — RC — 0 GUARD SOLENOID
12 — RC — 0 ESR COIL



TRANSFORMER



NOTE
SOLDER WIRES ONTO
DIODE AND CAP.
(DOUBLE CRIMP WHERE
NECESSARY)

