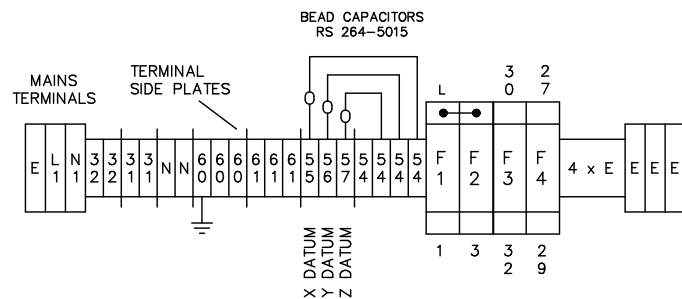
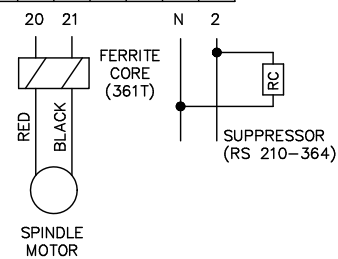
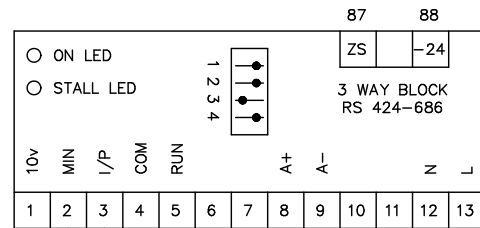
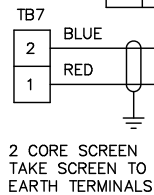
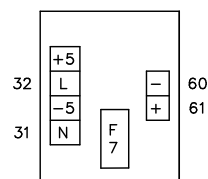


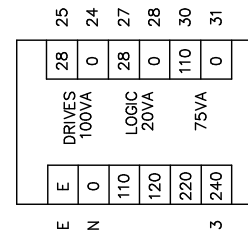
0 - 10v FROM DENSTEP CONTROL BOARD



24v PSU



CONTROL TRANS



FUSES ON DINRAIL

F1	SPINDLE DRIVE	6.3 AMP
F2	CONTROL TRANS	3.15 AMP
F3	110v AC CIRCUIT	3.15 AMP
F4	DENSTEP LOGIC	3.15 AMP

FUSES ON COMPONENTS

F5	DENSTEP BOARD	6.3 AMP
F6	SPINDLE DRIVE	16 AMP
F7	24v PSU	2 AMP

MOUNT 24v PSU DIRECTLY ON PANEL - NOT ON DINRAIL

MICROMILL	SHEET 2
TERMINAL AND RELAY WIRING	MICROMILL
	DENSTEP