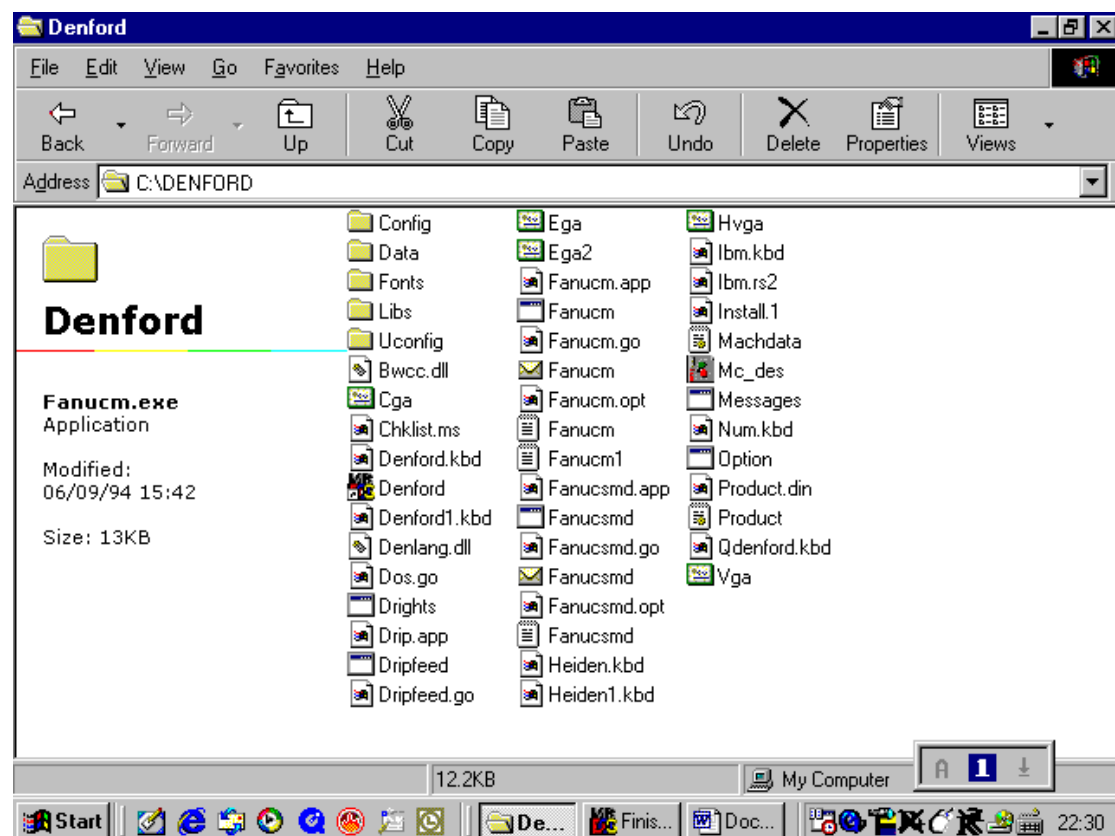
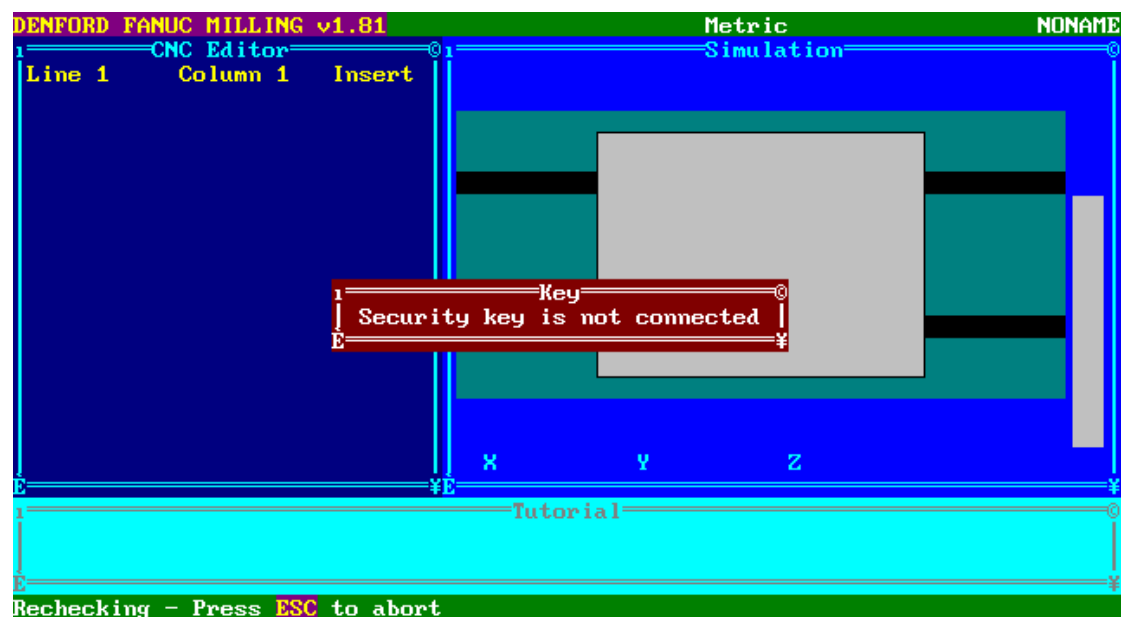


I opened Fanucm here:

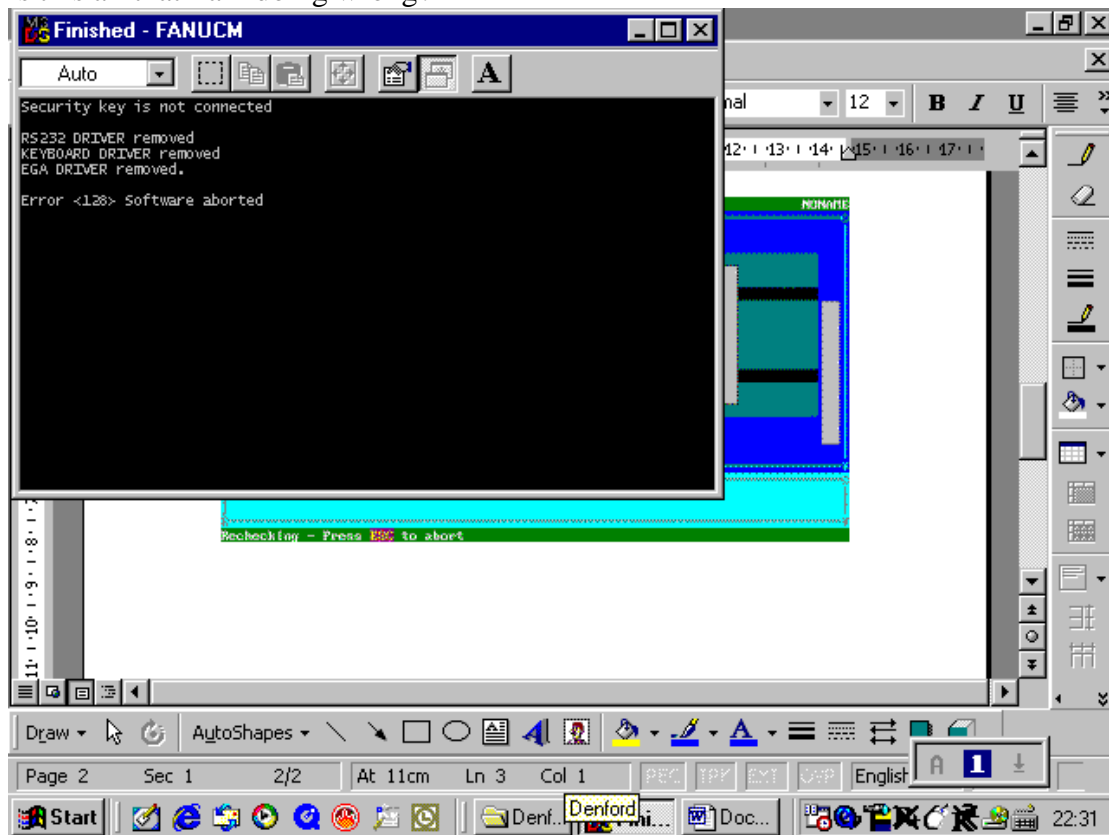


And I got this, even though the dongle is indicated as inserted if MillCam Designer is opened. I had changed the parallel port BIOS to ECP type.



When I pressed Escape this error message turned up: Does it mean the RS232 Driver and others are not on the computer or something? If so, are they available somewhere?

Is this all that I am doing wrong?



below is what I got when I ran  
drights

