

KEY SWITCH

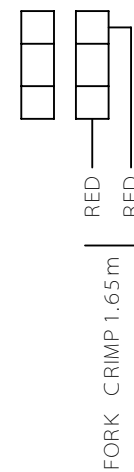


MACHINE ON  
LAMP



EMERGENCY  
STOP  
SWITCH

FORK CRIMP  
AT SWITCH END



SPINDLE MOTOR

RED	650mm	FERRULE
BLACK	650mm	FERRULE
ORANGE	1.4m	FERRULE
WHITE	1.1m	FORK CRIMP
GREEN	650mm	FERRULE

STEPPER MOTOR (VEXTA)  
(PK 266 - E 2.0A)

RED	RED	
BROWN *		
WHITE	YELLOW	X AXIS 1.1m
BLUE		Y AXIS 1.75m
		Z AXIS 1.15m
BLACK		
ORANGE *	ORANGE	FERRULE
GREEN		
YELLOW	BLACK	

DATUM SWITCHES

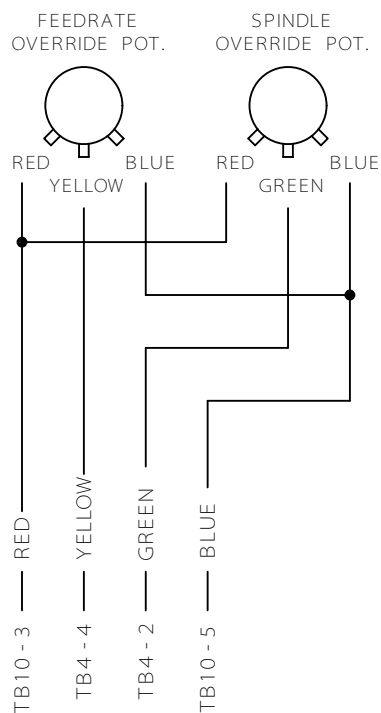
90° CRIMPS AT SWITCH END WITH  
180mm BLACK HEATSHRINK  
FERRULES AT PANEL END

X AXIS	1.1m	GREY
Y AXIS	1.9m	PINK
Z AXIS	1m	PURPLE

\* ENSURE THAT CORRECT COLOURS ARE USED

MICROMILL 2000  
SWITCH AND MOTOR  
WIRING DETAILS

SHEET 5  
MICROMILL  
DENSTEP



KEY SWITCH



MACHINE ON  
LAMP



EMERGENCY  
STOP  
SWITCH

FORK CRIMP  
AT SWITCH END



SPINDLE MOTOR

RED	650mm	FERRULE
BLACK	650mm	FERRULE
ORANGE	1.4m	FERRULE
WHITE	1.1m	FORK CRIMP
GREEN	650mm	FERRULE

STEPPER MOTOR (SANYO DENKI)  
(103 H 7123 - 0440)

RED	RED
BLACK	BLACK
ORANGE	ORANGE
WHITE	YELLOW
BLUE	NOT CONNECTED
YELLOW	
X AXIS	1.1m FERRULE
Y AXIS	1.75m
Z AXIS	1.15m

DATUM SWITCHES

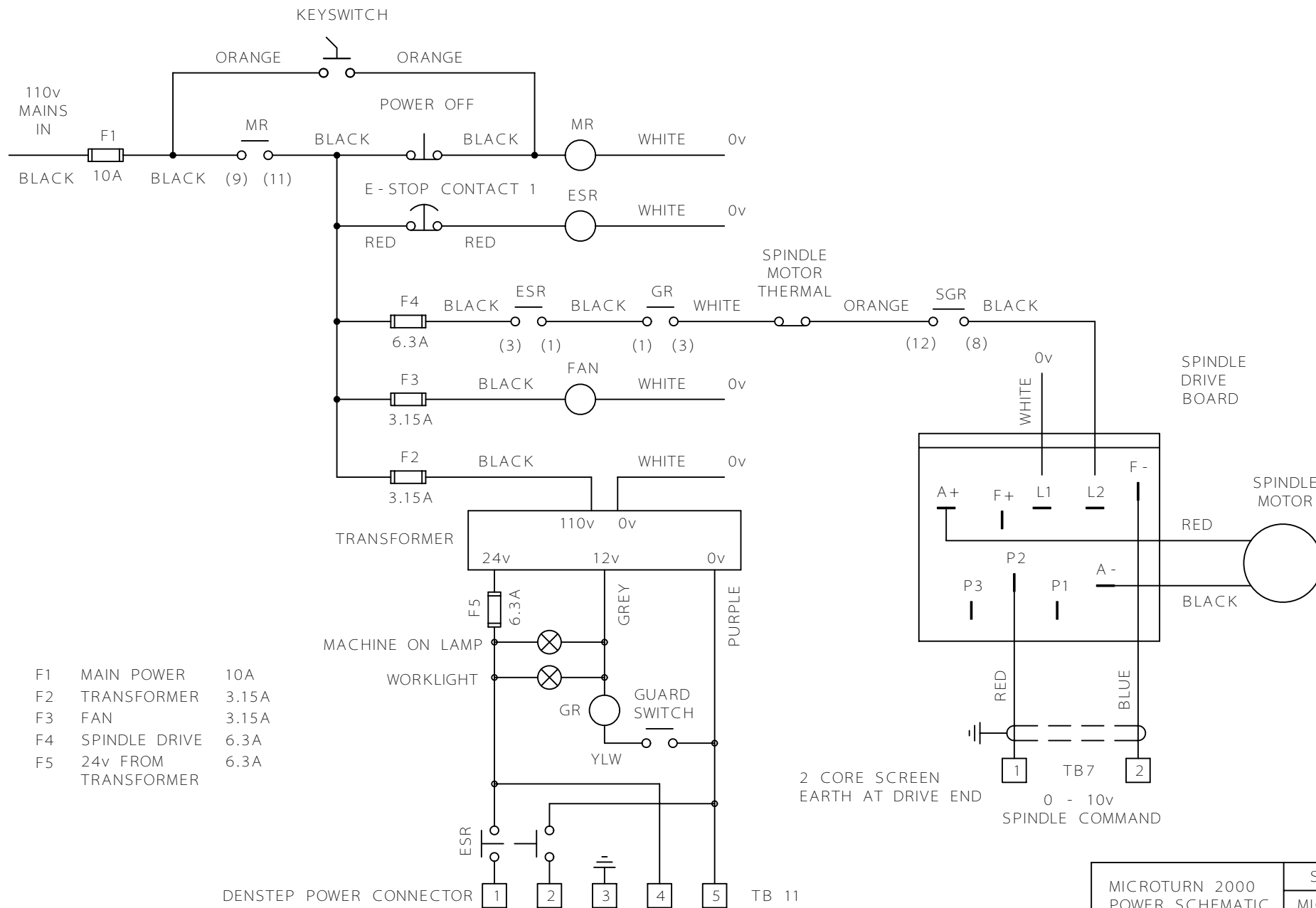
90° CRIMPS AT SWITCH END WITH  
180mm BLACK HEATSHRINK  
FERRULES AT PANEL END

X AXIS	1.1m	GREY
Y AXIS	1.9m	PINK
Z AXIS	1m	PURPLE

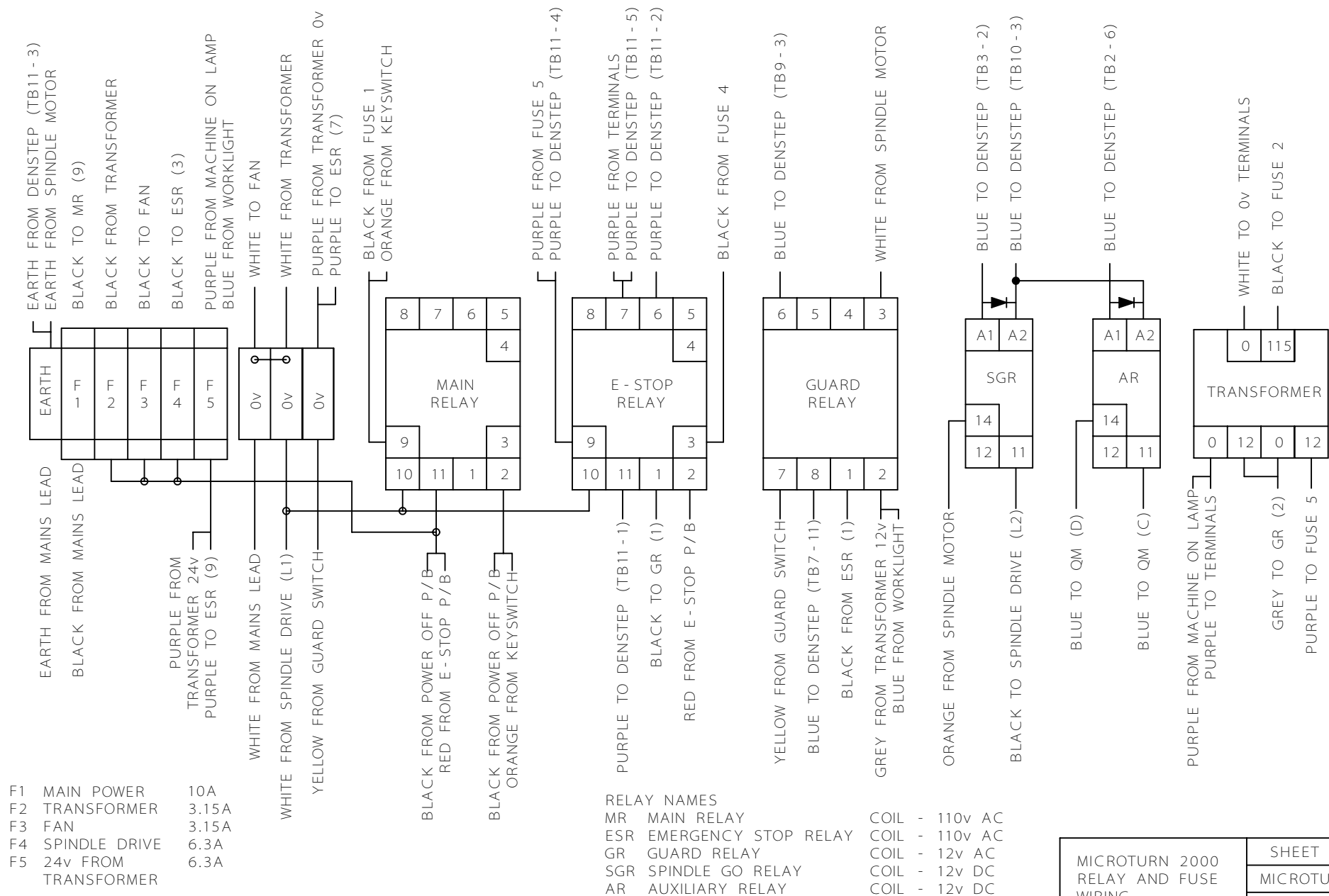
MICROMILL 2000  
SWITCH AND MOTOR  
WIRING DETAILS

SHEET 5  
MICROMILL  
DENSTEP

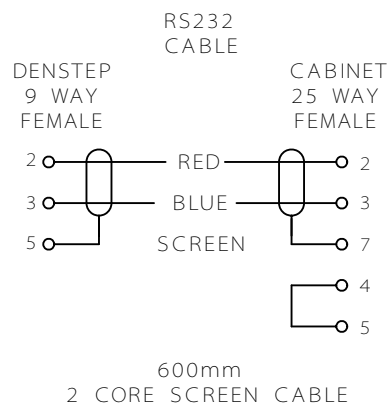




MICROTURN 2000 POWER SCHEMATIC 110v SUPPLY	SHEET 1
	MICROTURN
	DENSTEP



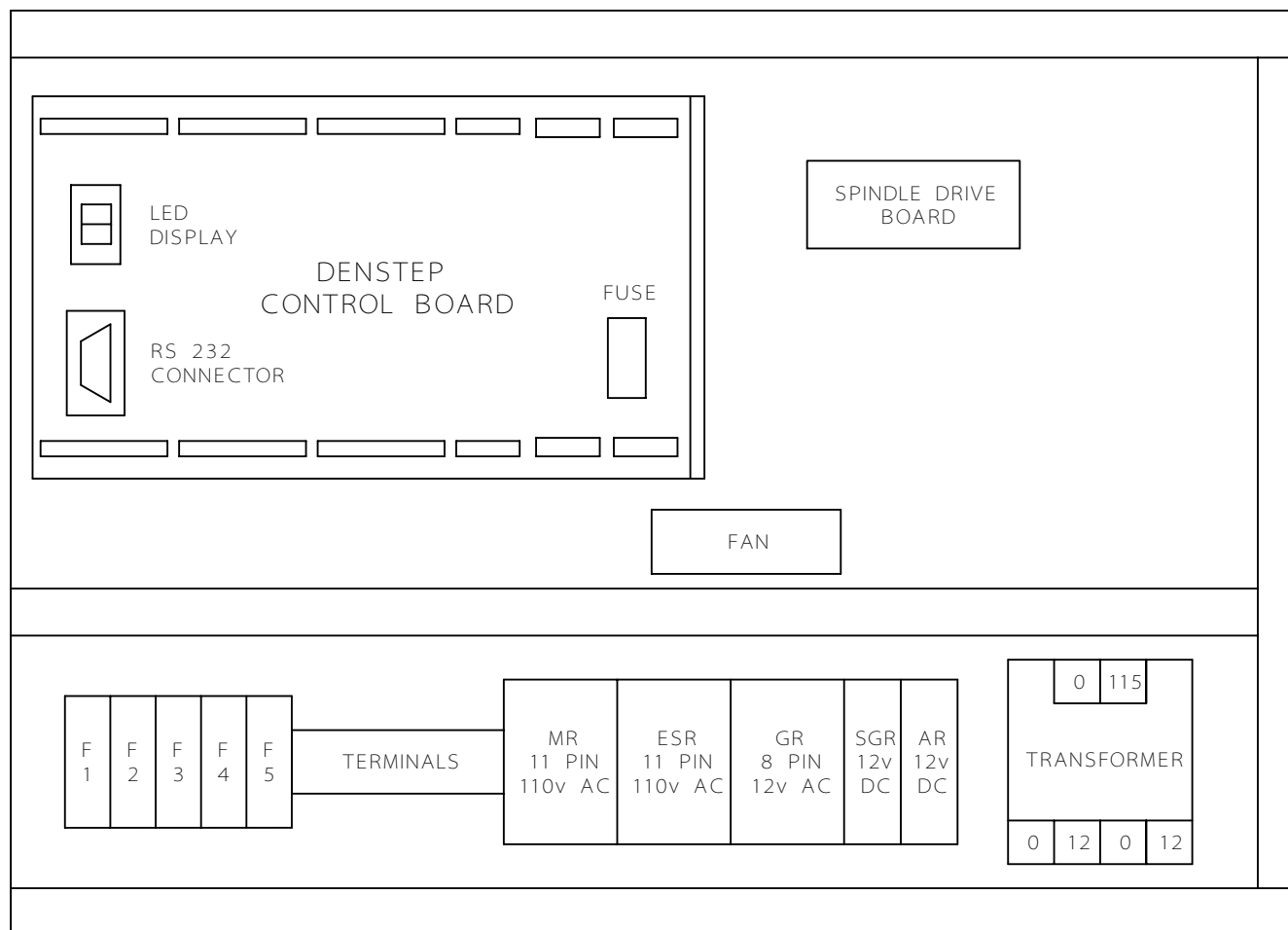




AUXILIARY CONNECTOR



8 WAY QM (RS 467 - 194)  
FEMALE PINS (RS 468 - 557)



RELAY NAMES

MR MAIN RELAY

ESR EMERGENCY STOP RELAY

GR GUARD RELAY

SGR SPINDLE GO RELAY

AR AUXILIARY RELAY

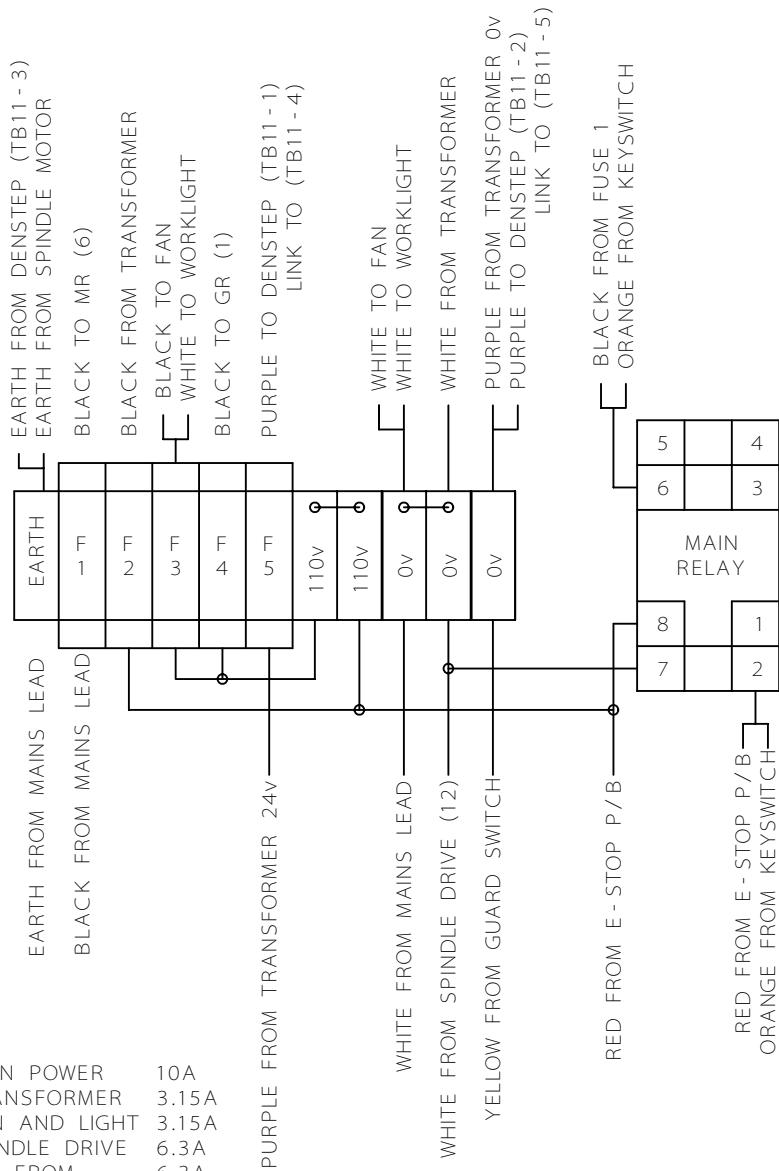
MICROTURN 2000  
PANEL LAYOUT  
AND RS232 CABLE

SHEET 4

MICROTURN

DENSTEP

F1 MAIN POWER 10A  
 F2 TRANSFORMER 3.15A  
 F3 FAN AND LIGHT 3.15A  
 F4 SPINDLE DRIVE 6.3A  
 F5 24v FROM TRANSFORMER 6.3A

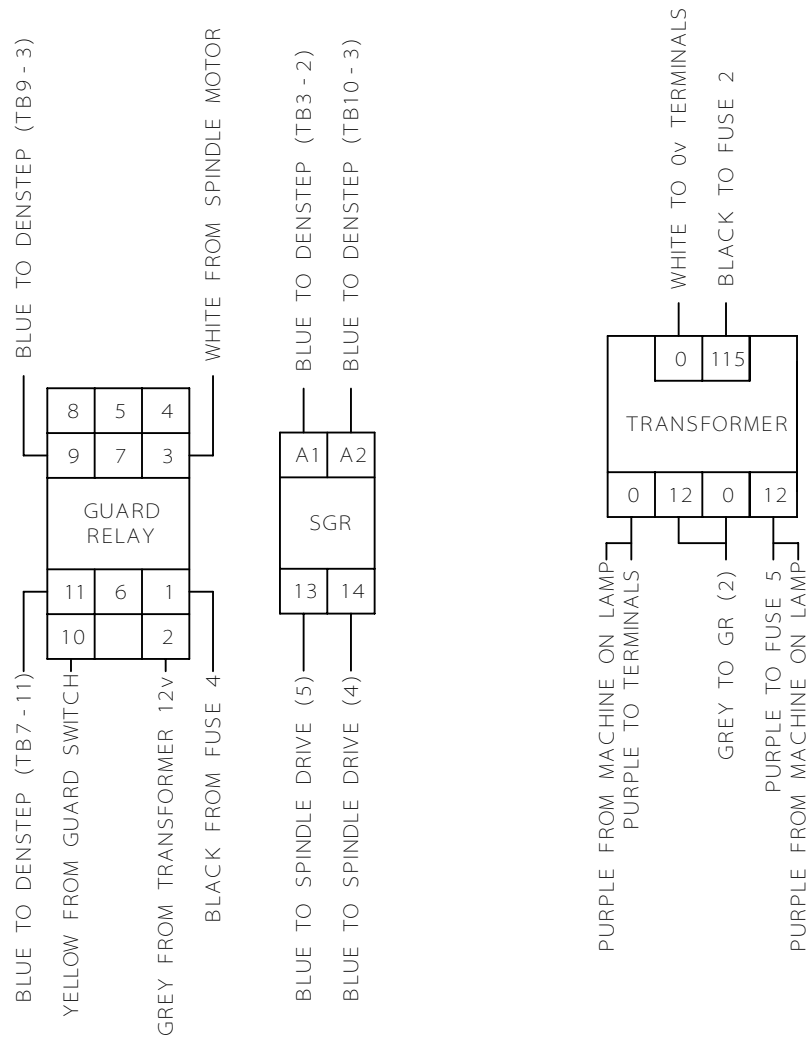


RELAY NAMES  
 MR MAIN RELAY  
 GR GUARD RELAY  
 SGR SPINDLE GO RELAY

COIL - 110v AC  
 COIL - 12v AC  
 COIL - 12v DC

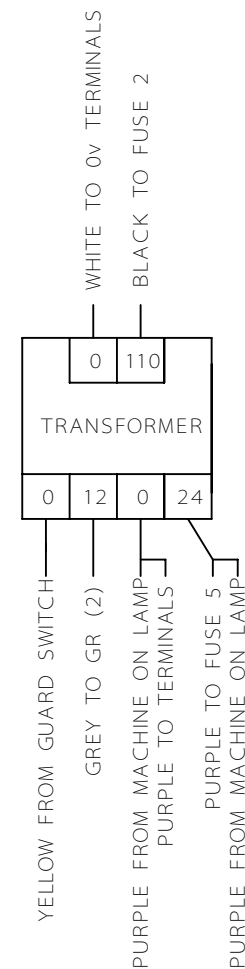
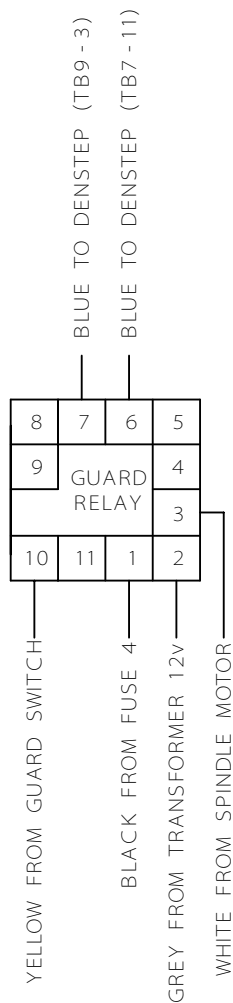
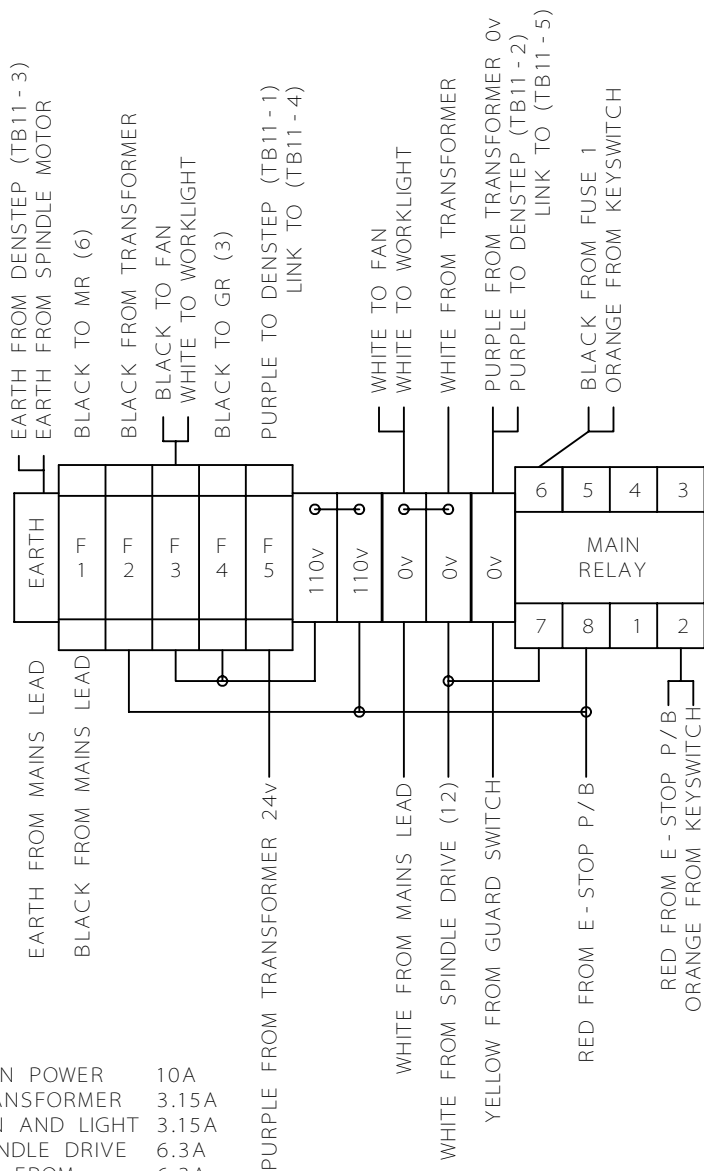
MICROTURN 2000  
 RELAY AND FUSE  
 WIRING

SHEET 2  
 MICROTURN  
 DENSTEP



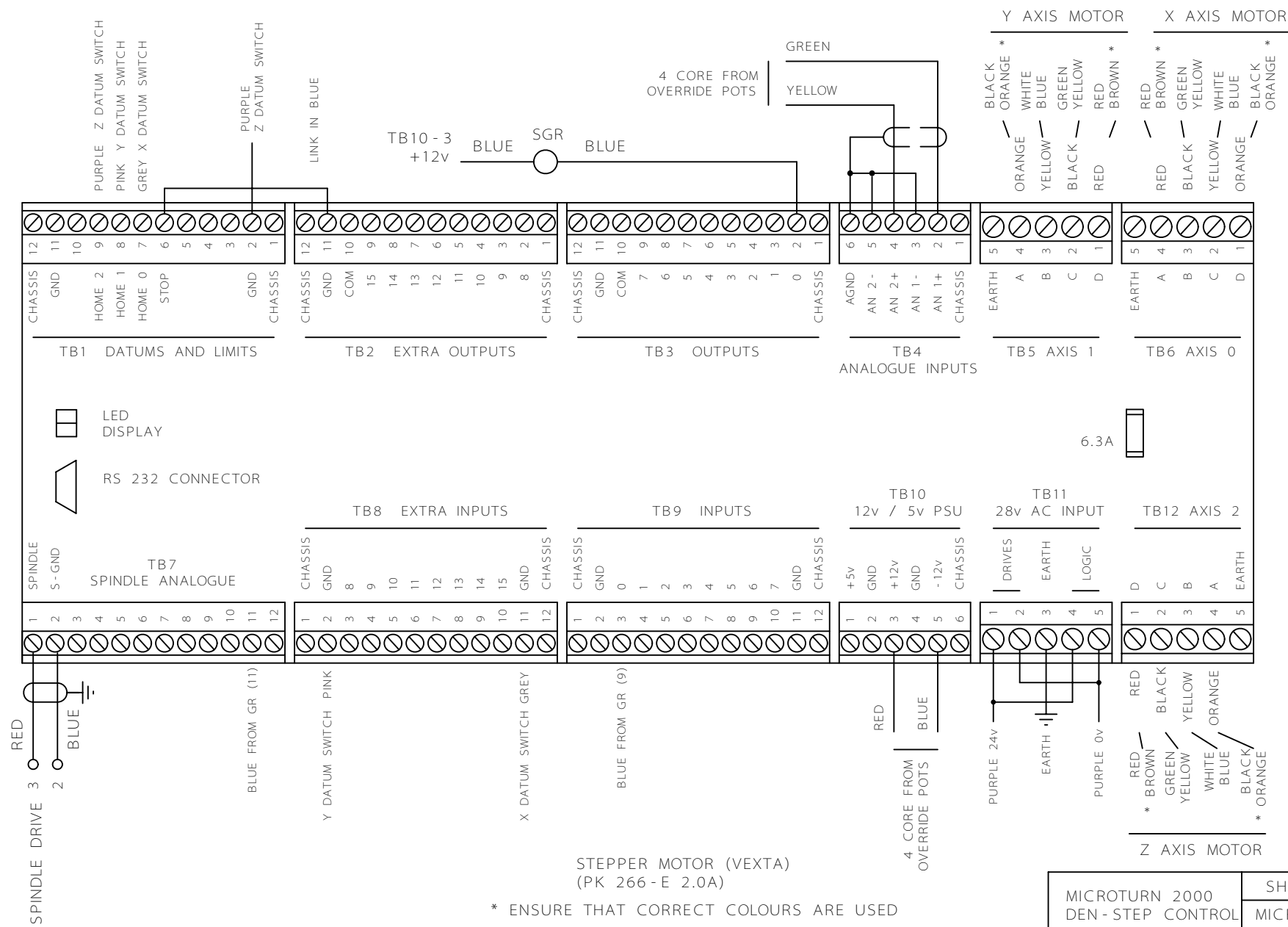


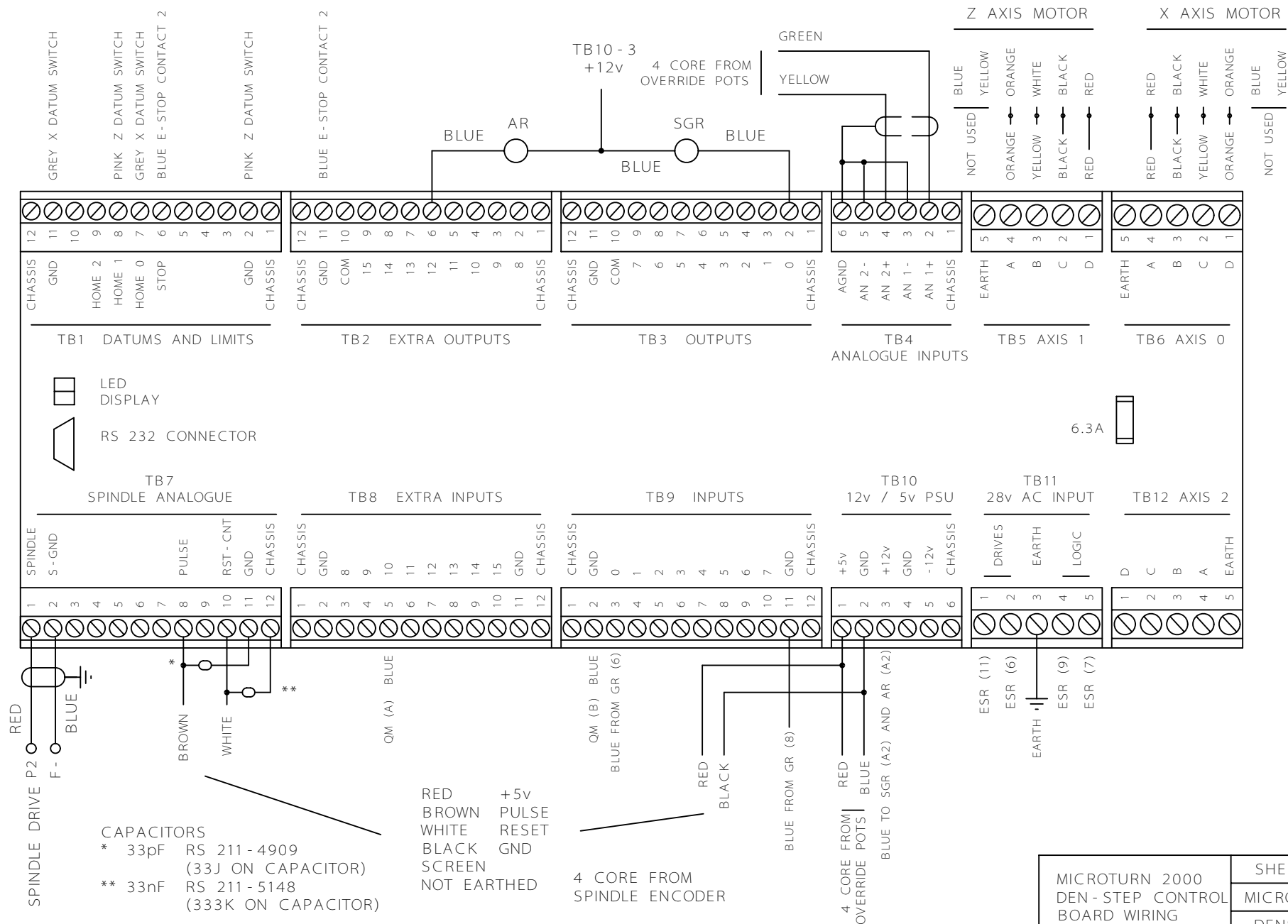
F1 MAIN POWER 10A  
 F2 TRANSFORMER 3.15A  
 F3 FAN AND LIGHT 3.15A  
 F4 SPINDLE DRIVE 6.3A  
 F5 24v FROM TRANSFORMER 6.3A

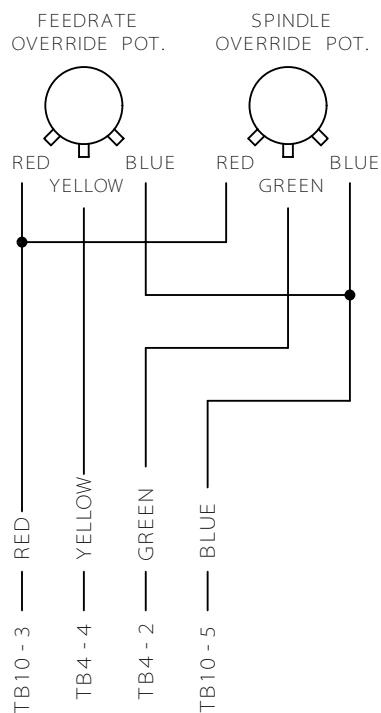


RELAY NAMES  
 MR MAIN RELAY COIL - 110v AC  
 GR GUARD RELAY COIL - 12v AC  
 SGR SPINDLE GO RELAY COIL - 12v DC

MICROTURN 2000 RELAY AND FUSE WIRING	SHEET 2
	MICROTURN
	DENSTEP







KEY SWITCH



MACHINE ON  
LAMP



EMERGENCY  
STOP  
SWITCH

FORK CRIMP  
AT SWITCH END



SPINDLE MOTOR

RED	650mm	FERRULE
BLACK	650mm	FERRULE
ORANGE	1.4m	FERRULE
WHITE	1.1m	FORK CRIMP
GREEN	650mm	FERRULE

STEPPER MOTOR (VEXTA)  
(PK 266 - E 2.0A)

RED	RED	
BROWN *		X AXIS 1.1m
WHITE	YELLOW	Z AXIS 1.75m
BLUE		
BLACK	ORANGE	
ORANGE *		FERRULE
GREEN		
YELLOW	BLACK	

DATUM SWITCHES

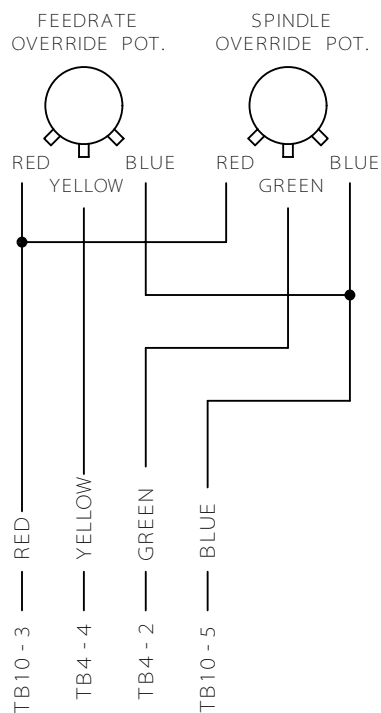
90° CRIMPS AT SWITCH END WITH  
180mm BLACK HEATSHRINK  
FERRULES AT PANEL END

X AXIS	1.1m	GREY
Z AXIS	1.9m	PINK

\* ENSURE THAT CORRECT COLOURS ARE USED

MICROTURN 2000  
SWITCH AND MOTOR  
WIRING DETAILS

SHEET 5
MICROTURN
DENSTEP



KEY SWITCH



MACHINE ON  
LAMP



EMERGENCY  
STOP  
SWITCH

FORK CRIMP  
AT SWITCH END



SPINDLE MOTOR

RED	650mm	FERRULE
BLACK	650mm	FERRULE
ORANGE	1.4m	FERRULE
WHITE	1.1m	FORK CRIMP
GREEN	650mm	FERRULE

STEPPER MOTOR (SANYO DENKI)  
(103 H 7123 - 0440)

RED	RED
BLACK	BLACK
ORANGE	ORANGE
WHITE	YELLOW
BLUE	NOT CONNECTED
YELLOW	

X AXIS	1.1m	FERRULE
Z AXIS	1.75m	

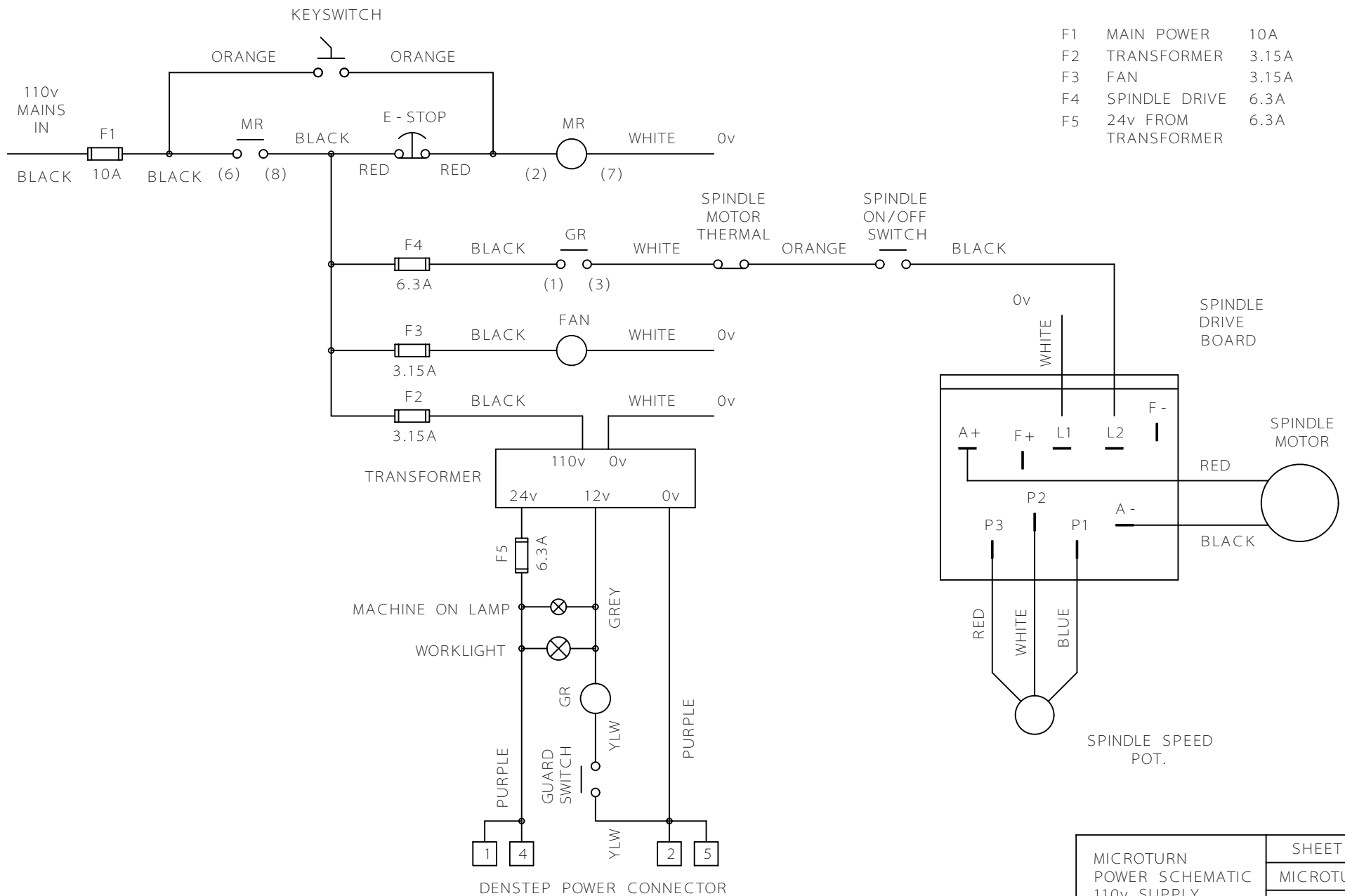
DATUM SWITCHES

90° CRIMPS AT SWITCH END WITH  
180mm BLACK HEATSHRINK  
FERRULES AT PANEL END

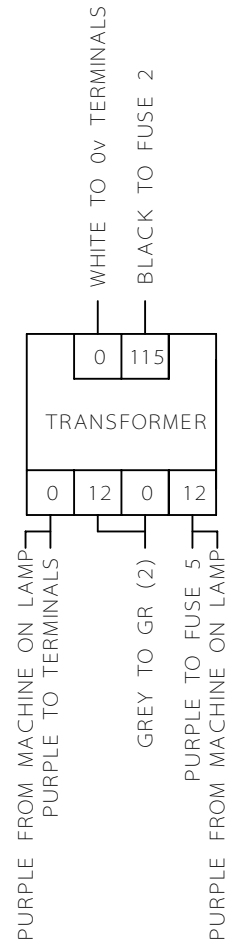
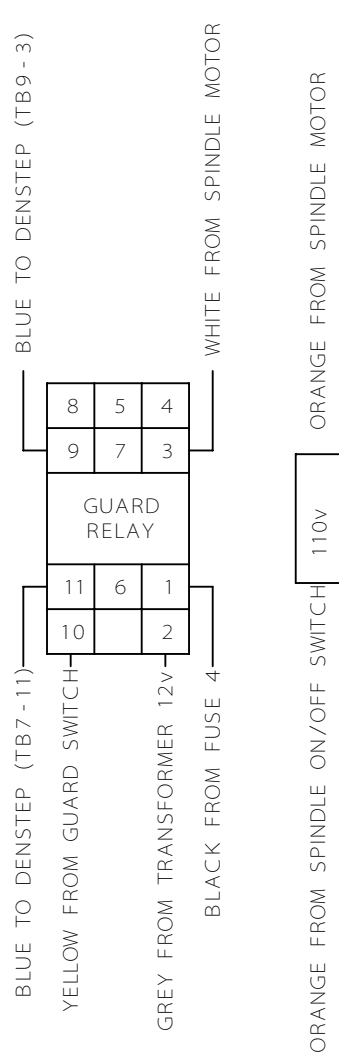
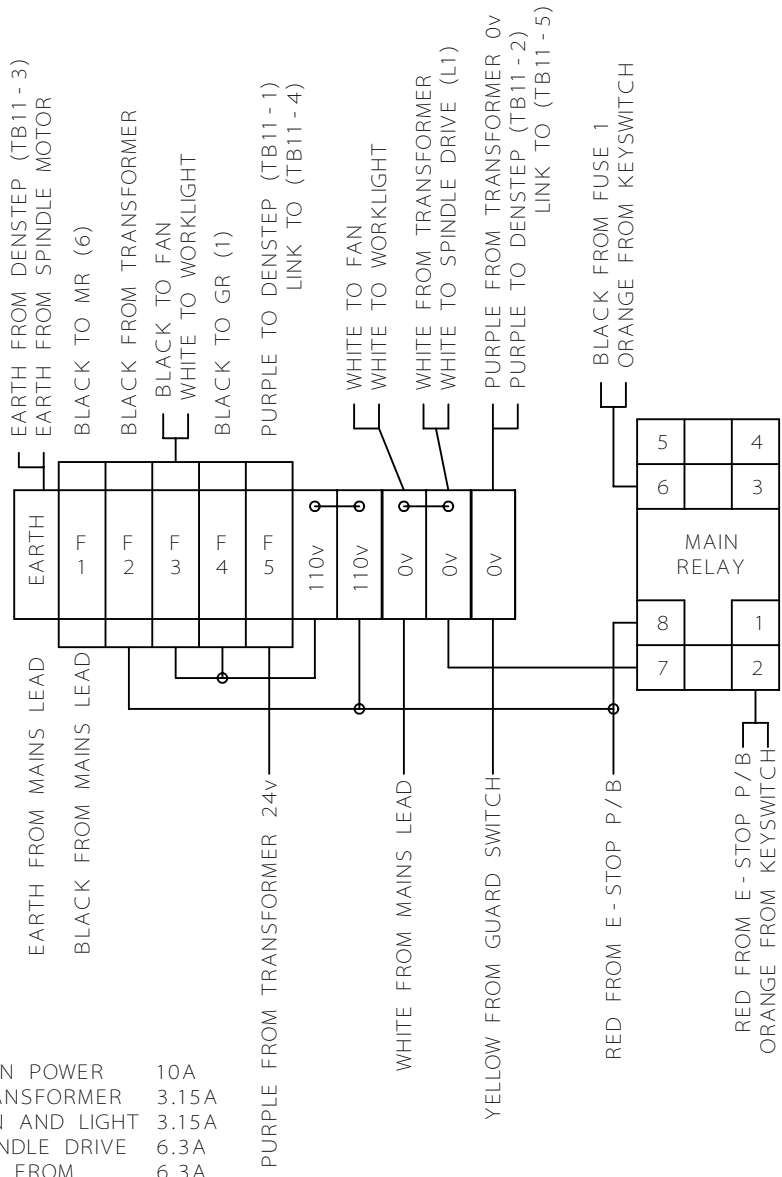
X AXIS	1.1m	GREY
Z AXIS	1.9m	PINK

MICROTURN 2000  
SWITCH AND MOTOR  
WIRING DETAILS

SHEET 5
MICROTURN
DENSTEP

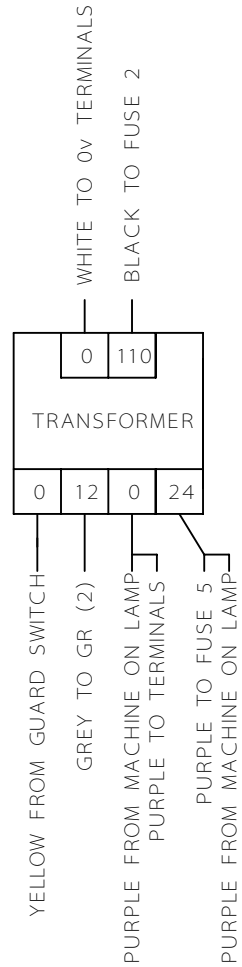
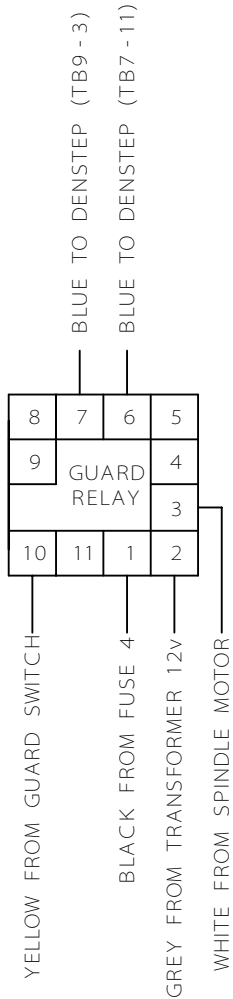
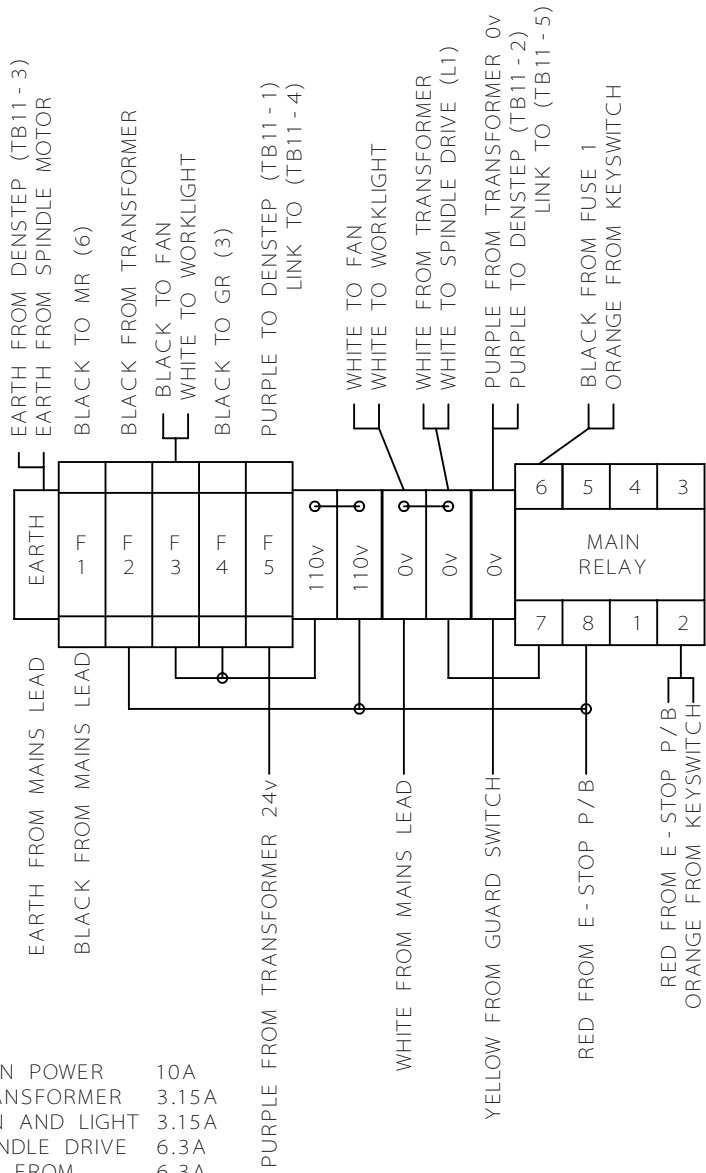


- F1 MAIN POWER 10A  
F2 TRANSFORMER 3.15A  
F3 FAN AND LIGHT 3.15A  
F4 SPINDLE DRIVE 6.3A  
F5 24v FROM TRANSFORMER 6.3A



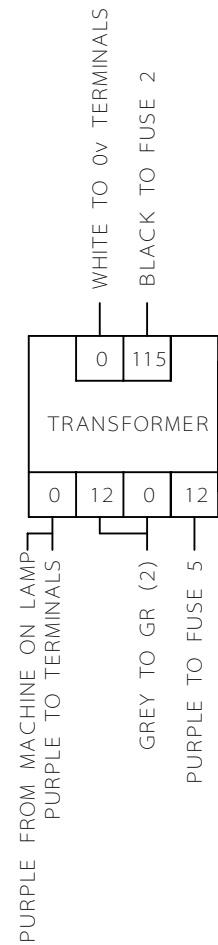
MICROTURN RELAY AND FUSE WIRING	SHEET 2
	MICROTURN
	DENSTEP

- F1 MAIN POWER 10A  
F2 TRANSFORMER 3.15A  
F3 FAN AND LIGHT 3.15A  
F4 SPINDLE DRIVE 6.3A  
F5 24v FROM TRANSFORMER 6.3A



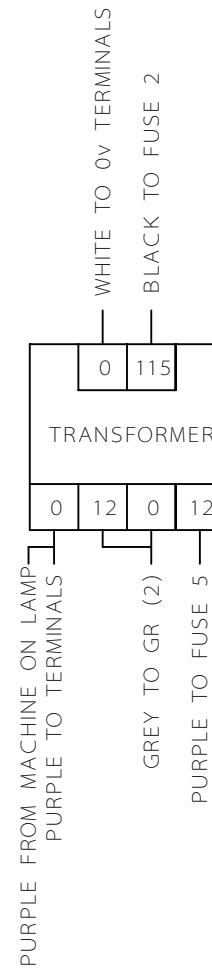
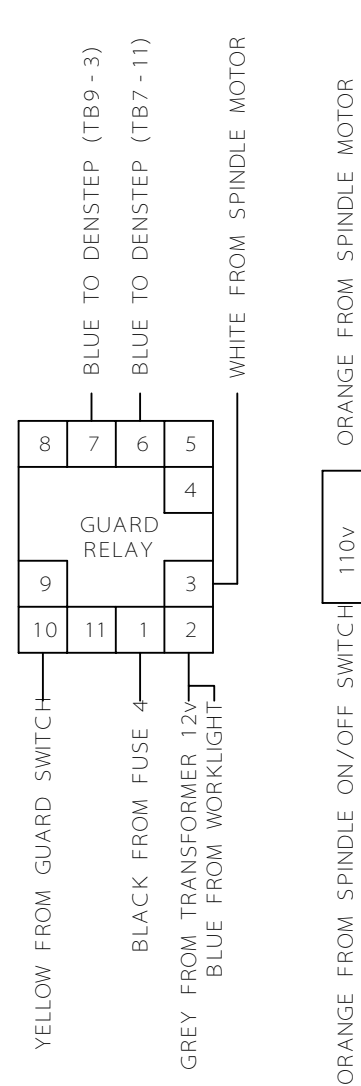
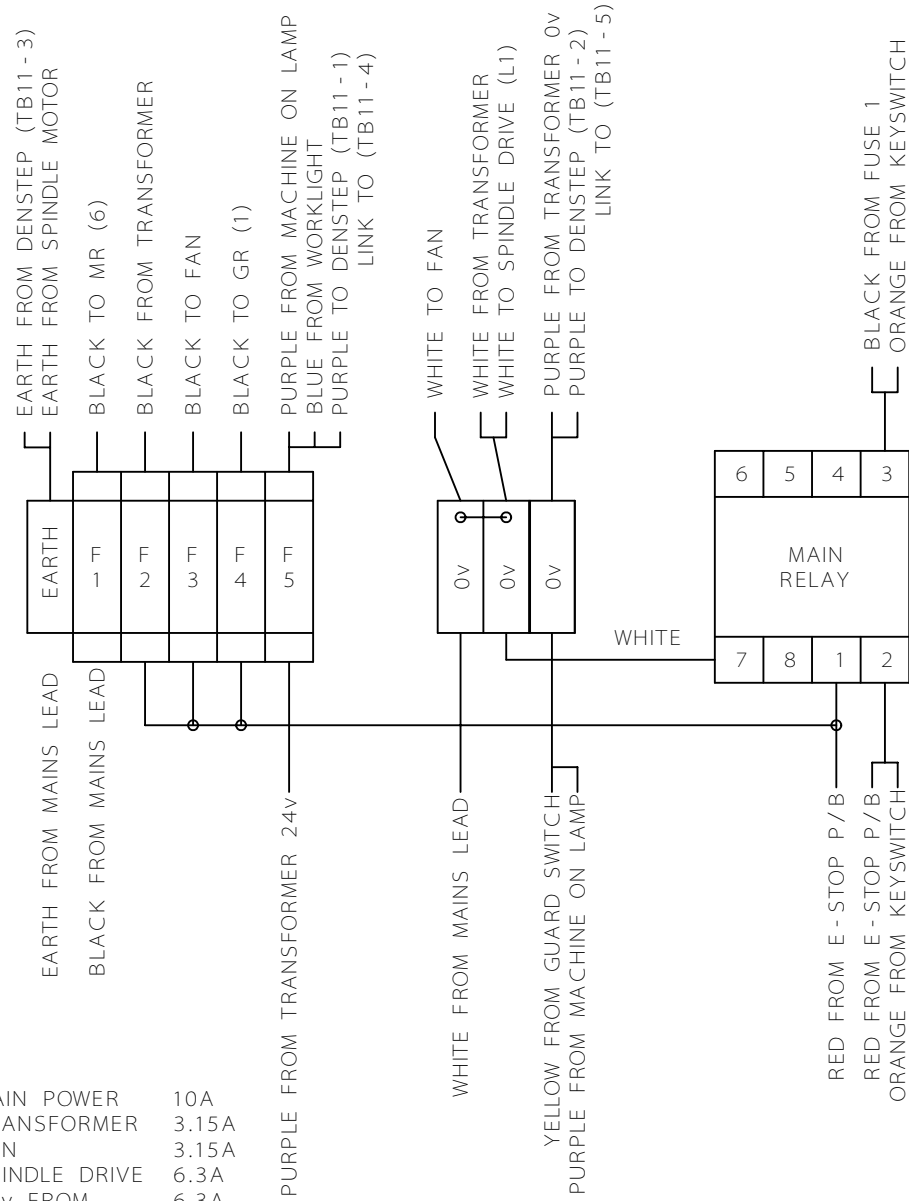
MICROTURN RELAY AND FUSE WIRING	SHEET 2
	MICROTURN
	DENSTEP



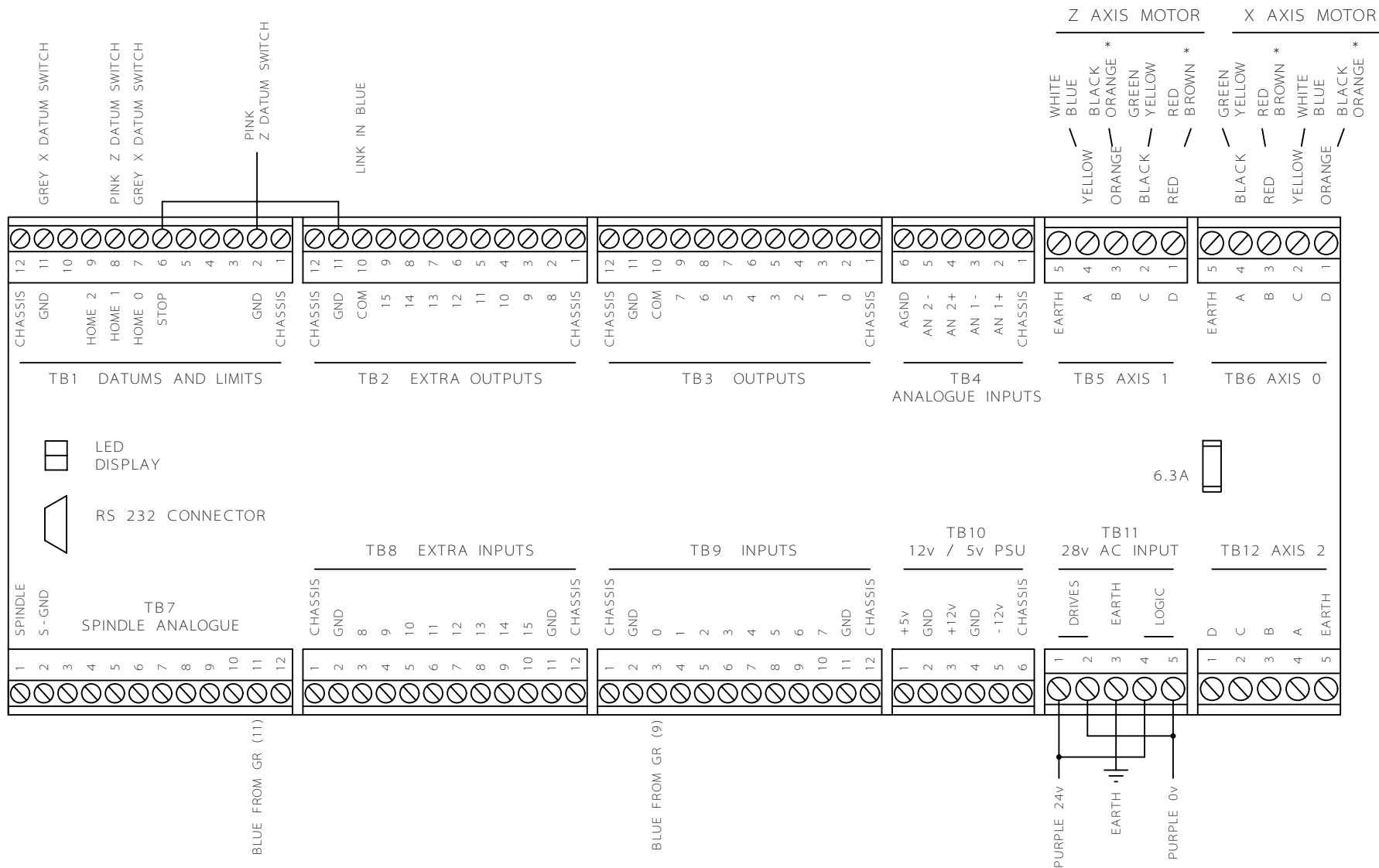


TD - 2B

- |    |                      |       |
|----|----------------------|-------|
| F1 | MAIN POWER           | 10A   |
| F2 | TRANSFORMER          | 3.15A |
| F3 | FAN                  | 3.15A |
| F4 | SPINDLE DRIVE        | 6.3A  |
| F5 | 24v FROM TRANSFORMER | 6.3A  |



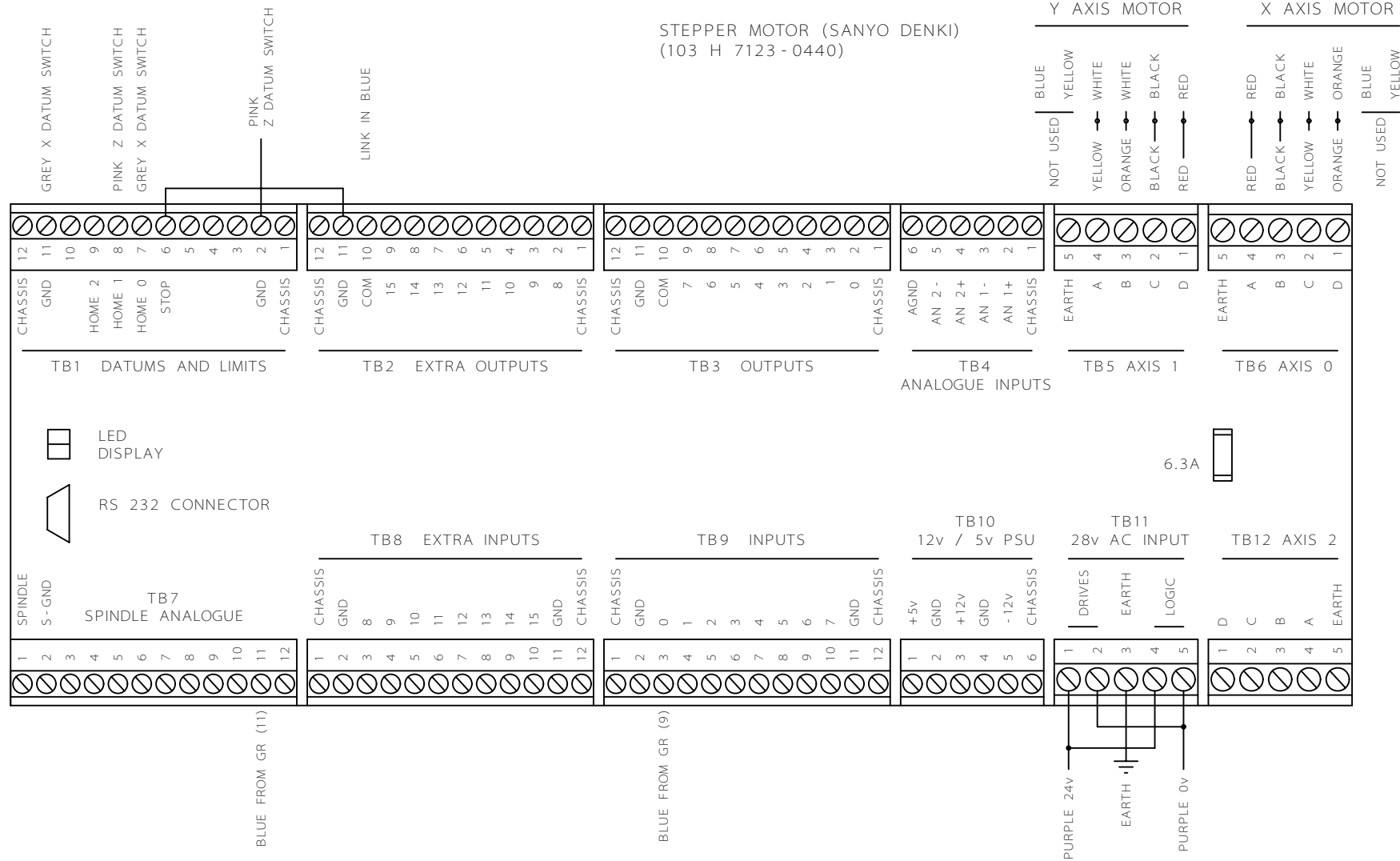
MICROTURN RELAY AND FUSE WIRING	SHEET 2
	MICROTURN
	DENSTEP

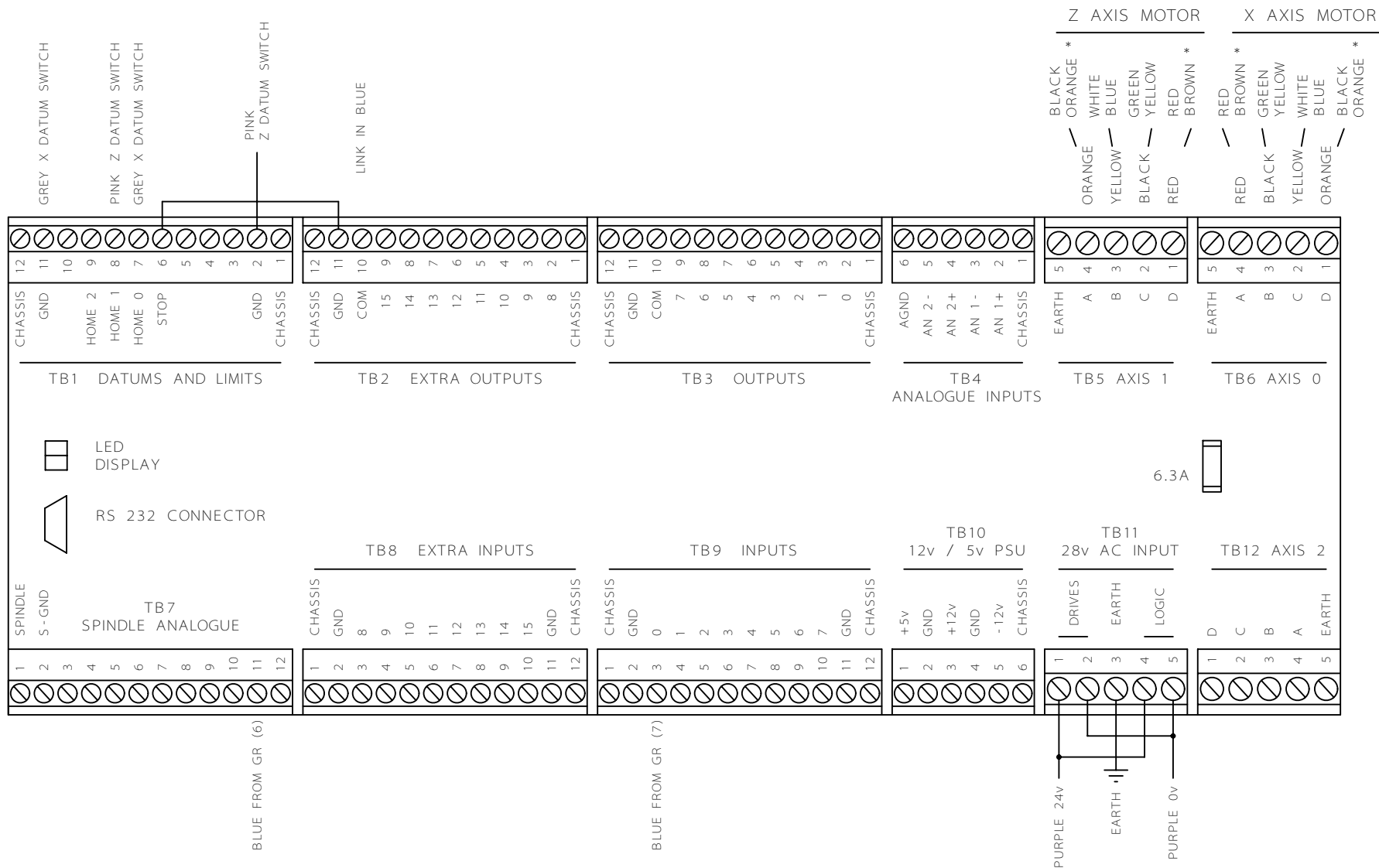


STEPPER MOTOR (VEXTA)  
(PK 266-E 2.0A)

\* ENSURE THAT CORRECT COLOURS ARE USED

MICROTURN DEN-STEP CONTROL BOARD WIRING	SHEET 3
	MICROTURN
	DENSTEP

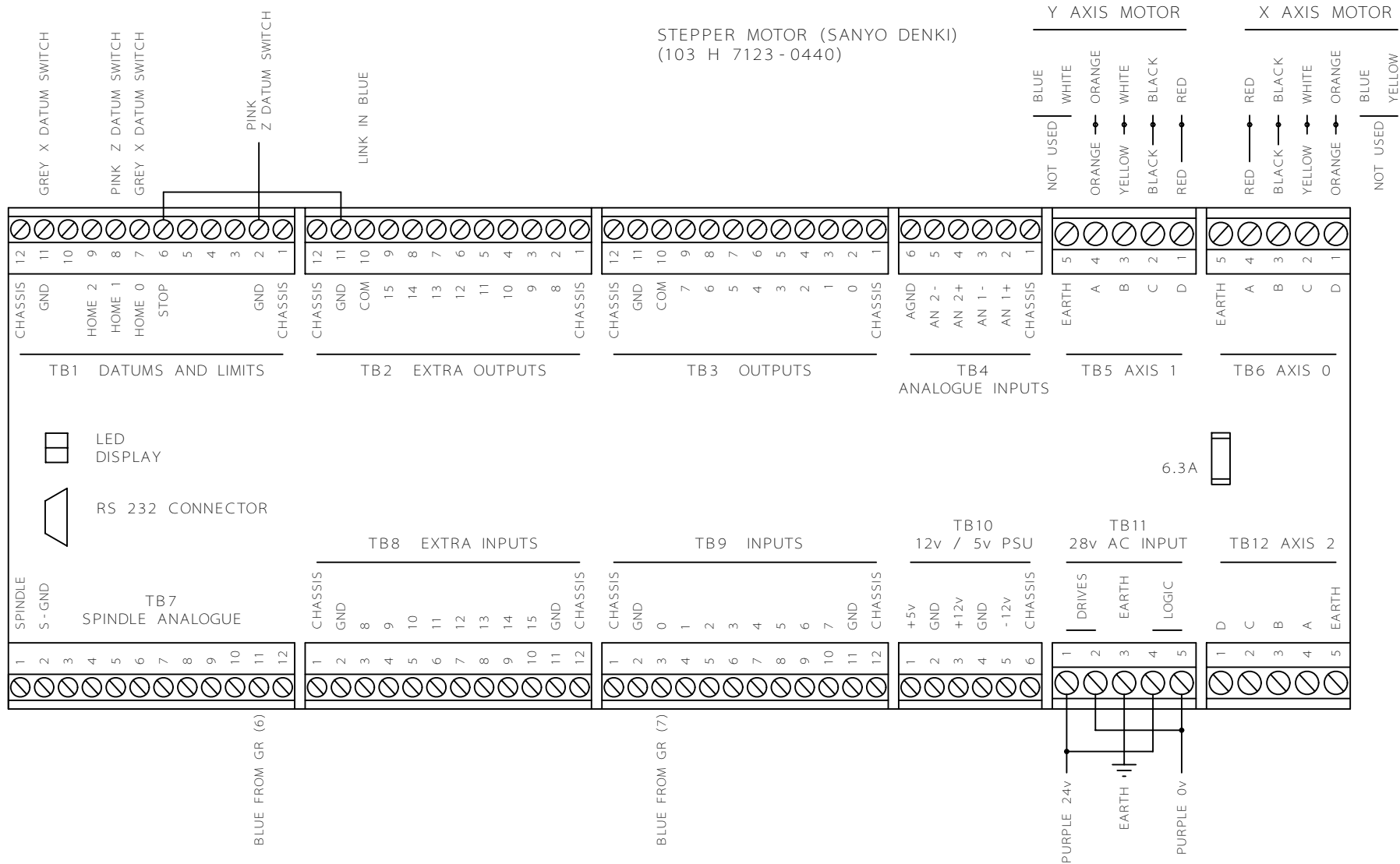


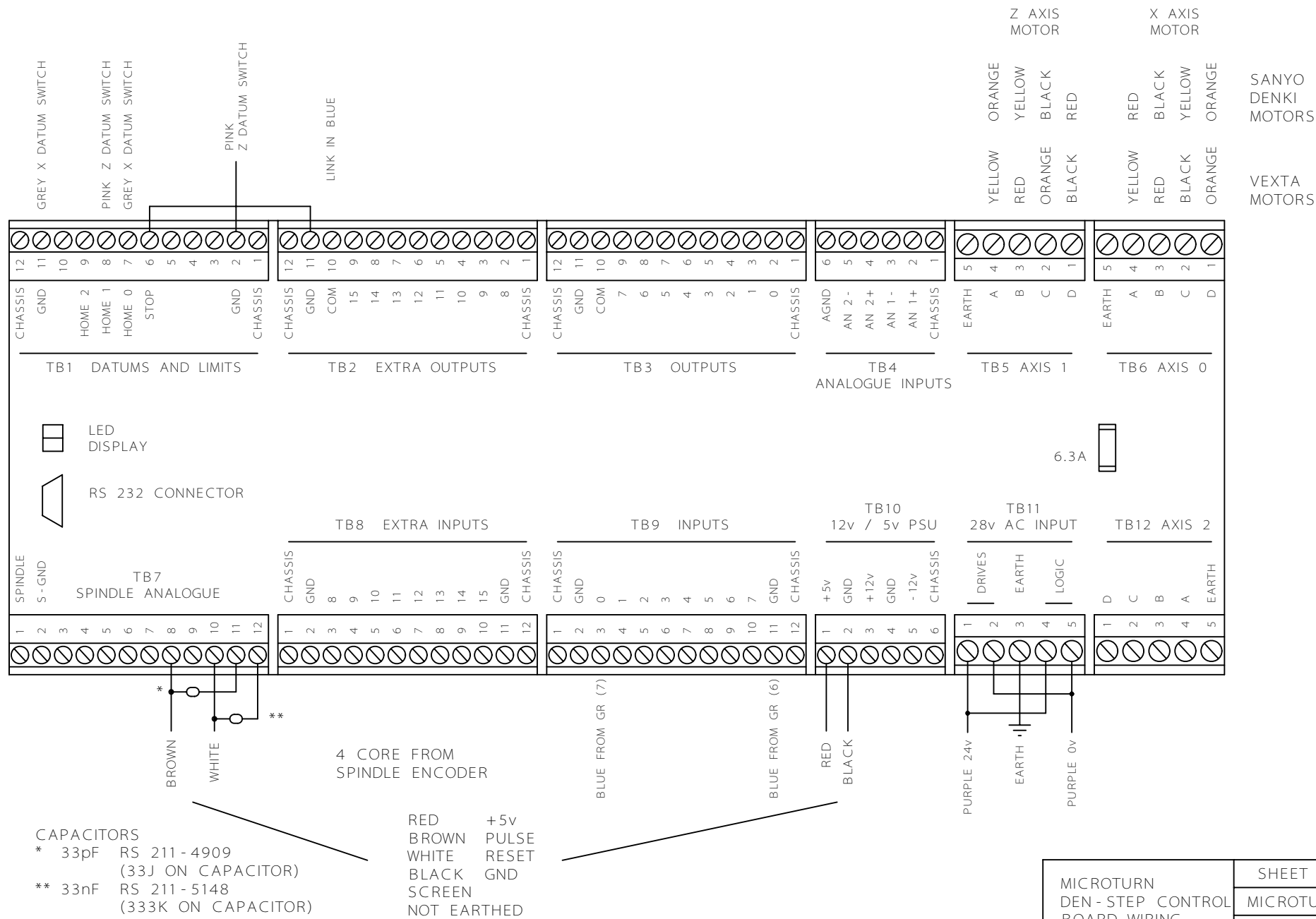


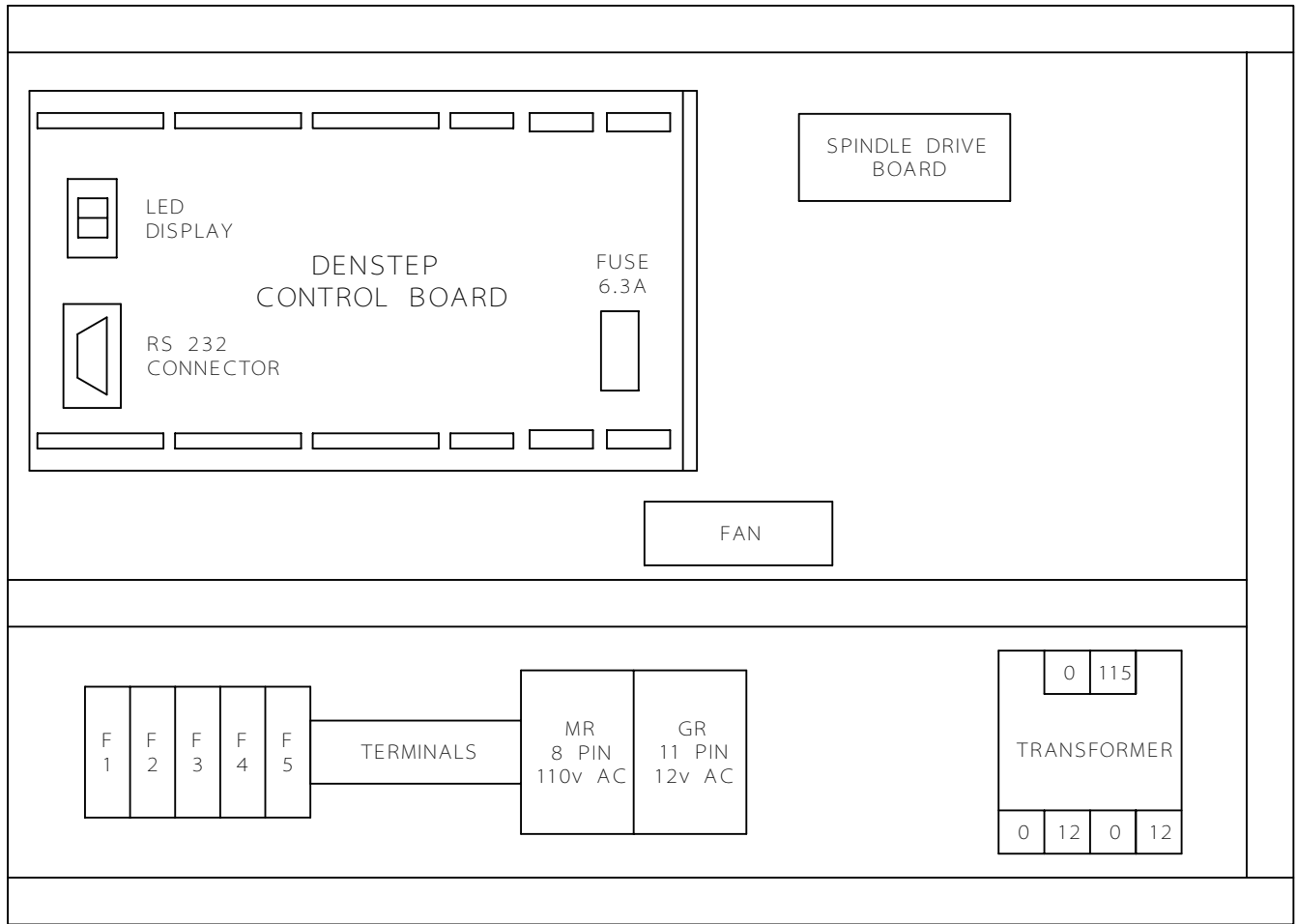
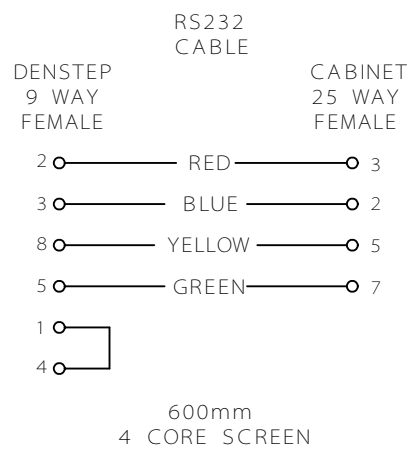
STEPPER MOTOR (VEXTA)  
(PK 266-E 2.0A)

\* ENSURE THAT CORRECT COLOURS ARE USED

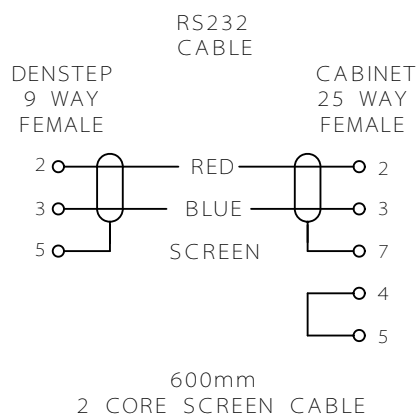
MICROTURN DEN-STEP CONTROL BOARD WIRING	SHEET 3
	MICROTURN
	DENSTEP



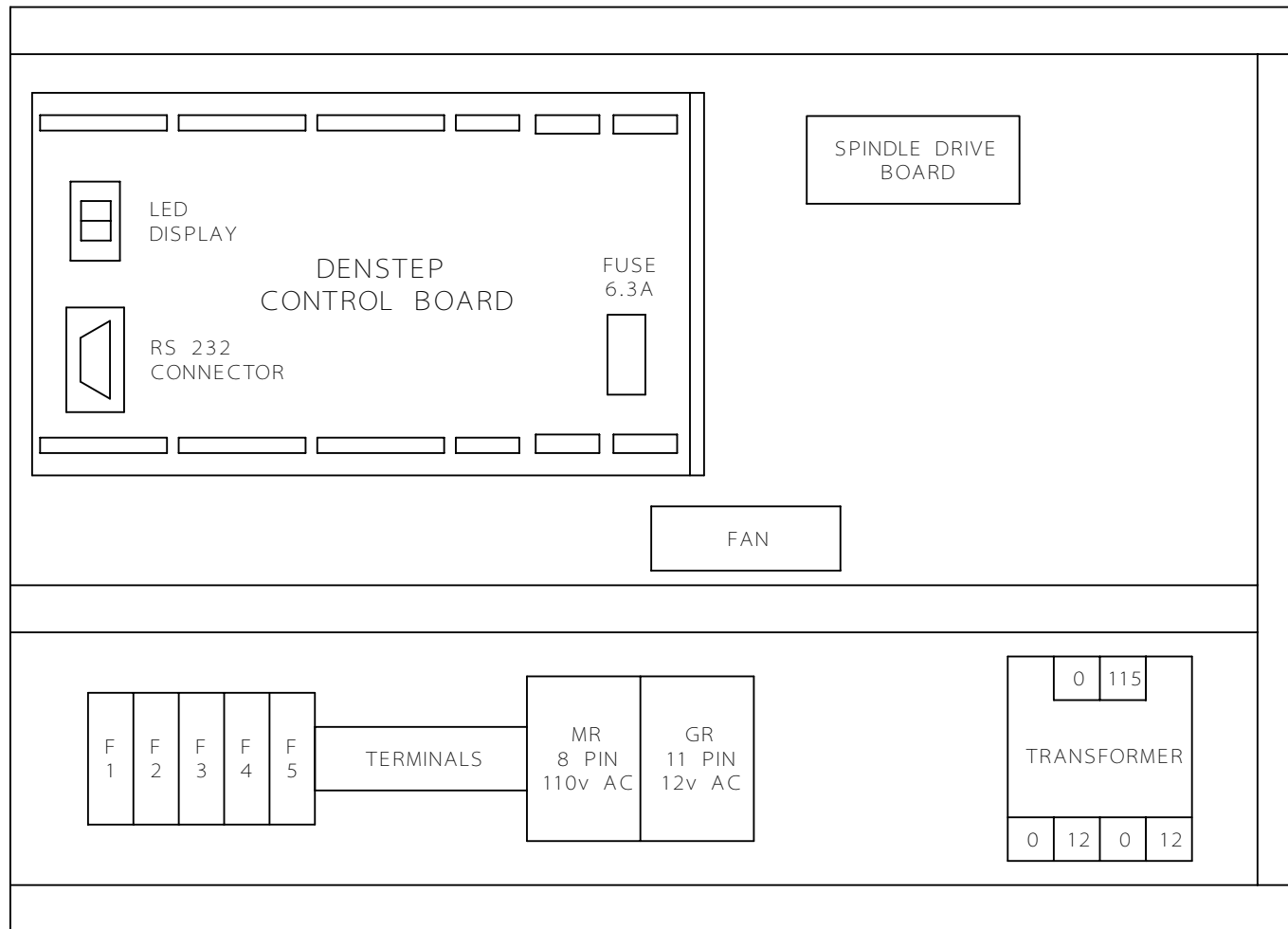




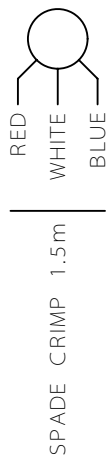




NEW RS 232 CABLE  
REQUIRED FOR ALL  
MICROMILLS AND MICROTURNS



SPINDLE  
SPEED POT.



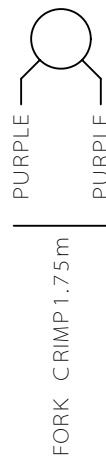
SPINDLE  
ON / OFF  
SWITCH



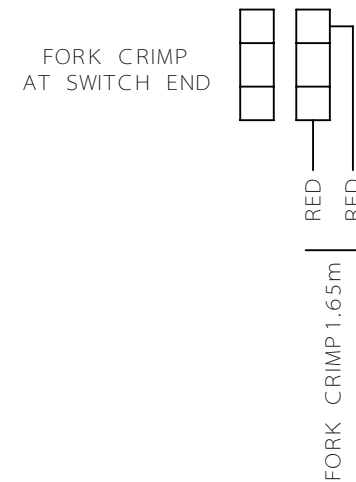
KEY SWITCH



MACHINE ON  
LAMP



EMERGENCY  
STOP  
SWITCH



SPINDLE MOTOR

RED	DO NOT	SPADE CRIMP
BLACK	EXTEND	
ORANGE	1.4m	FERRULE
WHITE	1.1m	FORK CRIMP
GREEN	650m	FERRULE

STEPPER MOTOR (VEXTA)  
(PK 266 - E 2.0A)

RED	RED	
BROWN *		X AXIS 1.1m
WHITE	YELLOW	Z AXIS 1.75m
BLUE		
BLACK	ORANGE	
ORANGE *		FERRULE
GREEN		
YELLOW	BLACK	

DATUM SWITCHES

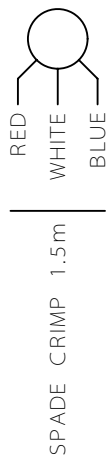
90° CRIMPS AT SWITCH END WITH  
180mm BLACK HEATSHRINK  
FERRULES AT PANEL END

X AXIS	1.1m	GREY
Z AXIS	1.9m	PINK

\* ENSURE THAT CORRECT COLOURS ARE USED

MICROTURN SWITCH AND MOTOR WIRING DETAILS	SHEET 5
	MICROTURN
	DENSTEP

SPINDLE  
SPEED POT.



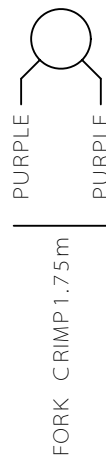
SPINDLE  
ON / OFF  
SWITCH



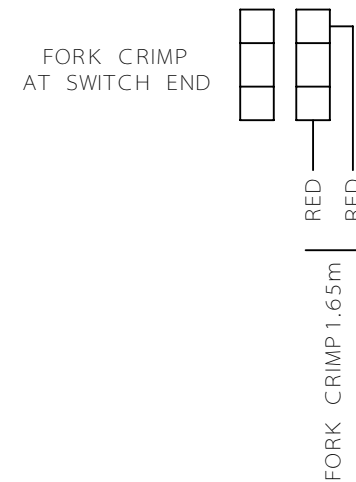
KEY SWITCH



MACHINE ON  
LAMP



EMERGENCY  
STOP  
SWITCH



SPINDLE MOTOR

RED	DO NOT	SPADE CRIMP
BLACK	EXTEND	
ORANGE	1.4m	FERRULE
WHITE	1.1m	FORK CRIMP
GREEN	650m	FERRULE

STEPPER MOTOR (SANYO DENKI)  
(103 H 7123 - 0440)

RED	RED	
BLACK	BLACK	
ORANGE	ORANGE	
WHITE	YELLOW	
BLUE	NOT CONNECTED	
YELLOW		
X AXIS	1.1m	FERRULE
Z AXIS	1.75m	

DATUM SWITCHES

90° CRIMPS AT SWITCH END WITH  
180mm BLACK HEATSHRINK  
FERRULES AT PANEL END

X AXIS	1.1m	GREY
Z AXIS	1.9m	PINK

MICROTURN SWITCH AND MOTOR WIRING DETAILS	SHEET 5
	MICROTURN
	DENSTEP