

There are two programs to install, one to format an SD card and one to write the image.

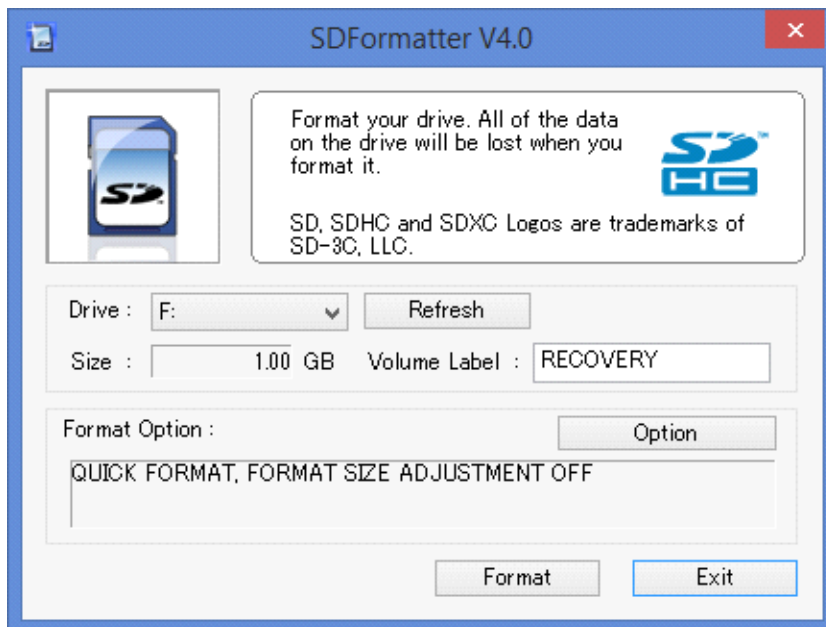
SD Formatter : https://www.sdcard.org/downloads/formatter/eula_windows/index.html

Win32 Disk Imager : <https://sourceforge.net/projects/win32diskimager/>

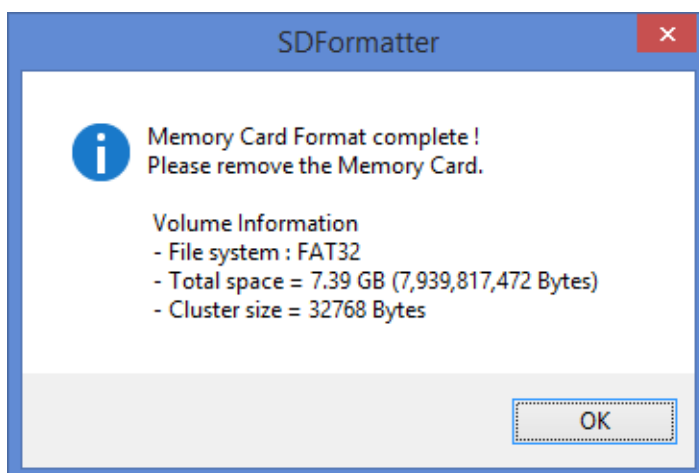
Creating an SD card for the Startgate

First you need to format the SD card.

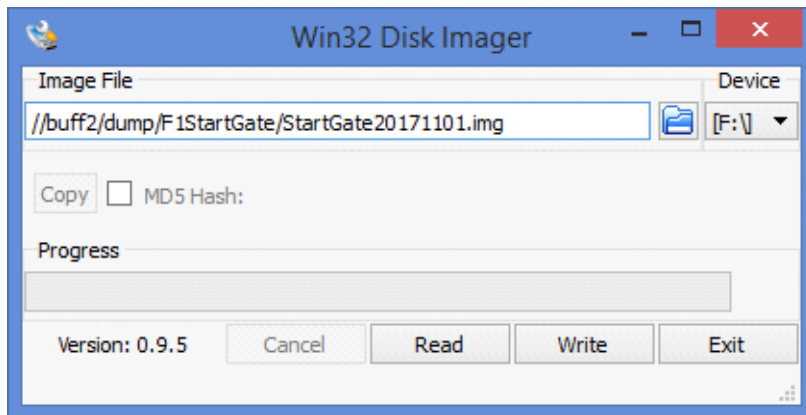
Start up the program called SDFormatter. Select the drive, then click Format. Answer OK to any questions.



Once it is complete, you'll get a message :



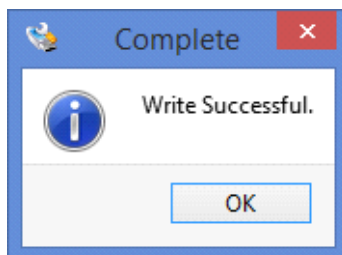
Next start the program Win 32 Disk Imager. Select the img file that contains the image. The latest is stored in <http://denfordata.com/downloads/RaspberryPi3.20201021a.img.zip>. It is probably best to copy the file onto the local PC first.



NEVER click the Read button, or that will save the image of the now formatted SD card over the top of the img file.

Once that's done, click the Write button and answer Yes to any questions.

It will take several minutes to complete. Once its done, it will tell you.



Then take the SD card out of the PC and slot it into the Raspberry Pi.