

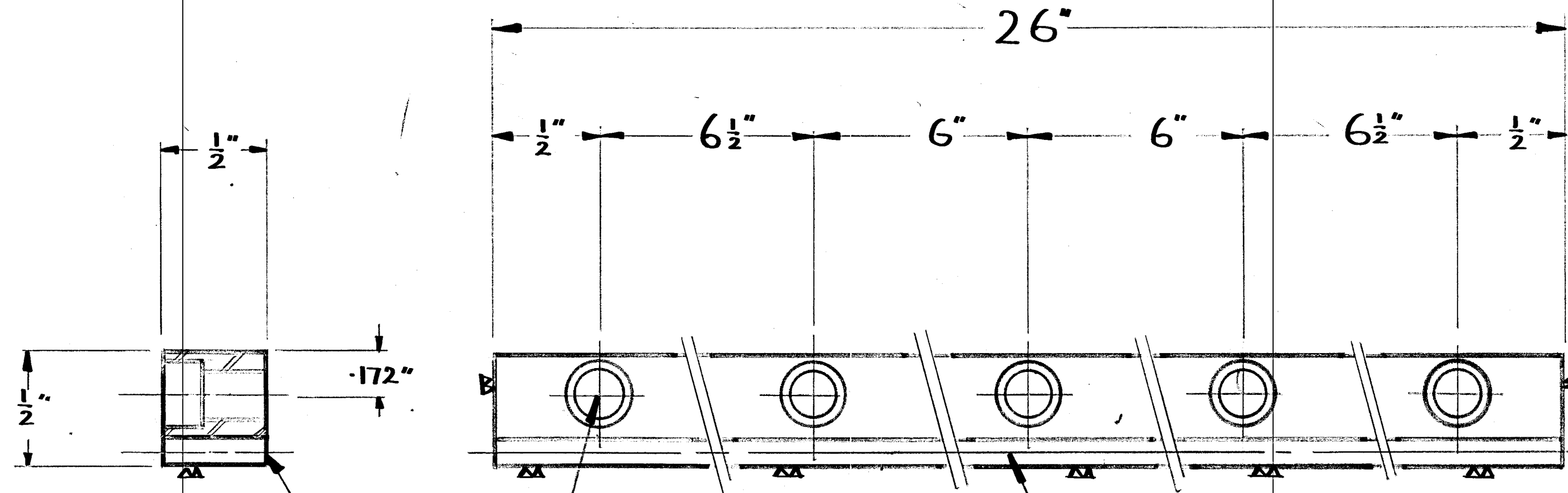
IF IN DOUBT ASK.

Redrawn 2.4.65

1157/65 2.4.65

2368/77 4.4.77

2643/78.27.11.78.R



N.B. : Break through  
burr MUST be at this  
side

5 holes drill  $\frac{3}{16}$ " dia & c' bore  
 $\frac{5}{16}$ " dia x  $\frac{3}{16}$ " deep

16 D.P. : Whole Tooth depth .1348"

Addendum .0625" : 20° Pressure Angle

Pitch .1463" : Cut over full length

Machine at w

5" Viceroy Metal Screwcutting Lathe : Rack.

DENFORD MACHINE TOOLS LTD.  
(Inc.) DENFORD SMALL TOOLS (BRIG) LTD.  
BRIGHOUSE,  
YORKSHIRE.

DRAWN  
M.M.Sowden  
CHECKED  
PASSED  
DATE 2.4.65.

MAT. M.S.  
MAT SIZE  $\frac{1}{2}$ " sq x 26 1/4  
No. RECD. 1 SCALE Full x 2  
DRAWING No. ML 100/403A