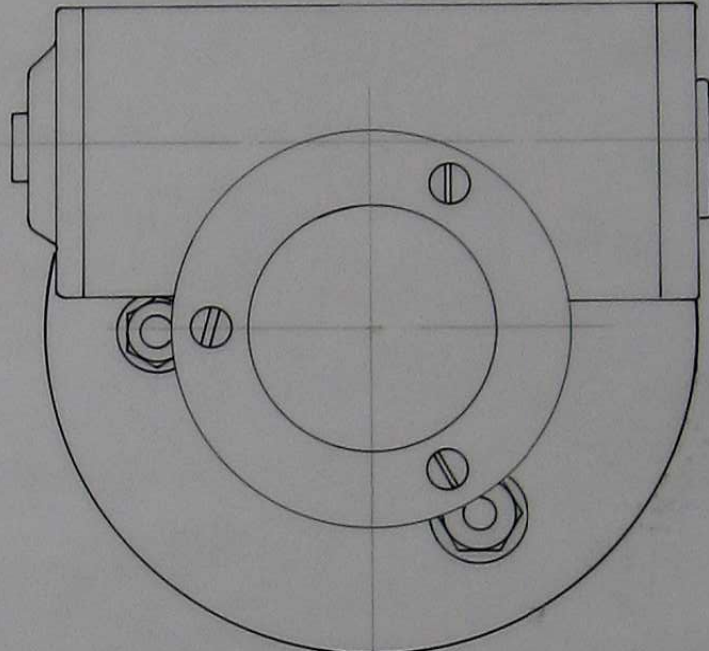
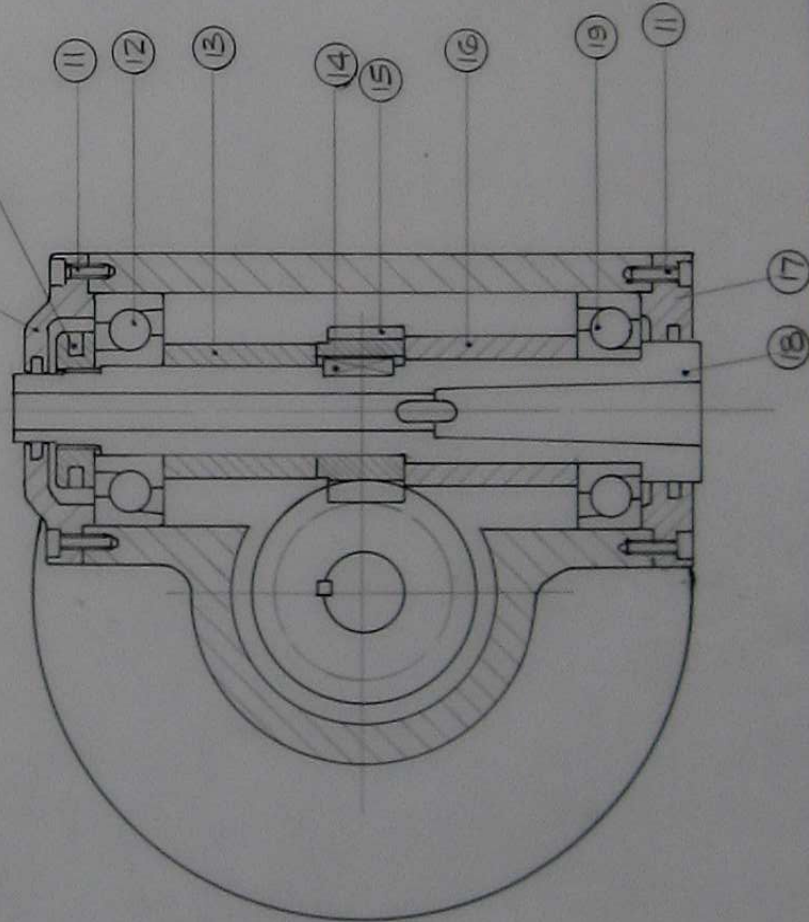
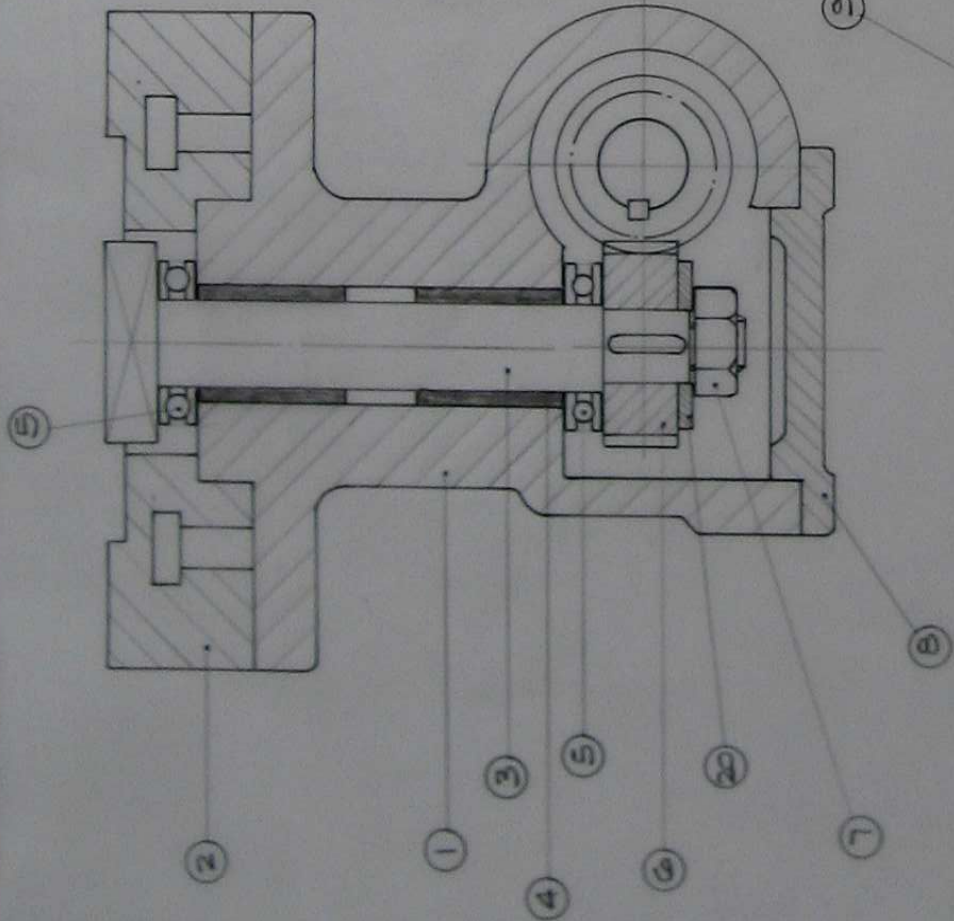


IF IN DOUBT ASK

DRG. No.



ITEM	DESCRIPTION	QTY
1	BODY	1
2	BASE GNC	1
3	DRIVING SPINDLE	1
4	BRONZE BUSH	2
5	THRUST RACE 7/8" EN	2
6	DRIVING GEAR 3/4" BORE	1
7	LOCKNUT	1
8	TOP COVER PLATE	1
9	GEAR SPINDLE COVER	1
10	LOCKNUT	1
11	2 BA SCREW	6
12	BEARING	1
13	SPACING COLLAR	1
14	3/16" KEY	1
15	DRIVEN GEAR	1
16	SPACING COLLAR	1
17	FRONT BEARING COVER	1
18	NPT MT SPINDLE	1
19	BEARING	1
20	WASHER	1
21	3/8 CLAMPING BOLTS	3

DRAWN		TRACED	CHECKED	APPROVED	DATE	SCALE
		11			16.8.30	
LIMITS ON DIMENSIONS UNLESS OTHERWISE STATED.						
ANGULAR $\pm 1/2^\circ$ 3 PLACE DECIMAL $\pm .005^\circ$						
FRACTIONAL $\pm .010"$ 4 PLACE DECIMAL $\pm .0005"$						
MATERIAL						
MATERIAL SIZE						
NO. RECD.						
MACHINE AT 17						
GRIND AT 17						
DRAWING No.						
DENFORD MACHINE TOOLS LTD. BRIGHOUSE, YORKSHIRE.						
T. SENIOR						
VERTICAL MILLING ATTACHMENT						
ALTERATIONS						