

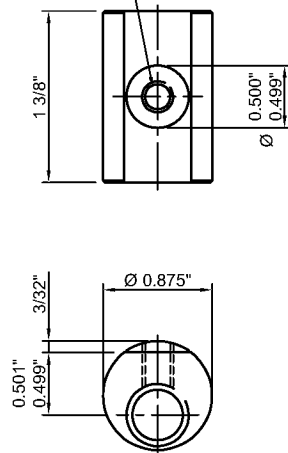
IF IN DOUBT ASK

MARCH 1961 - JUNE 1970

JUNE 1970 - SEP 1984

FROM SEP 1984

DRILL & TAP 1/4" BSW
MARK OFF ON ASSEMBLY

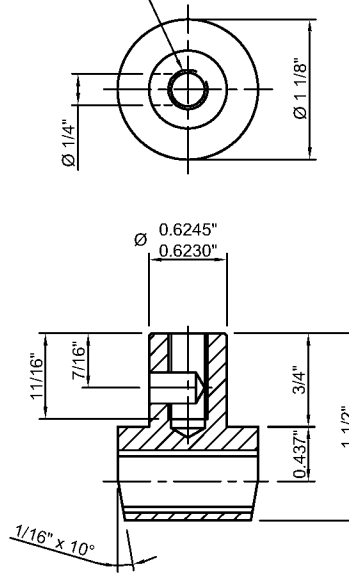


THREAD DATA

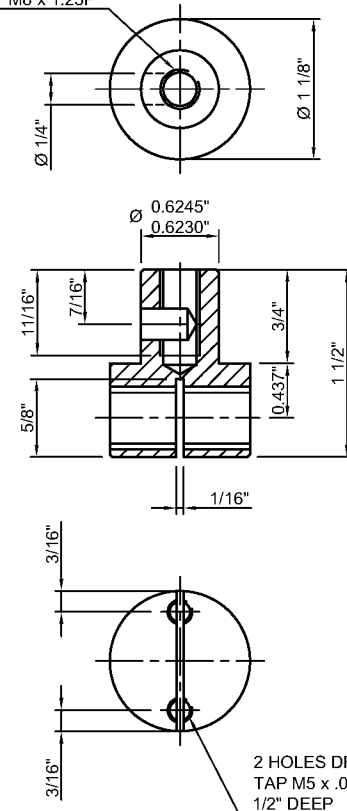
	ENGLISH	METRIC
BORE DIA	0.405"	0.4063"
THREAD DIA	0.500"	0.500"
THREAD PITCH	10 TPI	2.5mm
FORM	MODIFIED SQUARE	
DIRECTION	LH	LH
THREAD DEPTH	0.050"	0.0492"
LEAD	0.100"	0.098425"

(0.00157" DIFFERENCE)

DRILL Ø6.8
TAP M8 x 1.25P

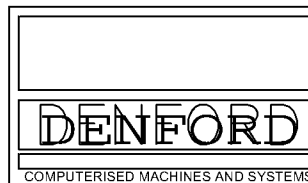


DRILL Ø6.8
TAP M8 x 1.25P



BREAK SHARP EDGES

UNLESS STATED OTHERWISE
ALL DIMENSIONS ARE IN mm
LIMITS ON DIMENSIONS ANGULAR $\pm 0.5^\circ$
LINEAR / DIAMETRAL $\pm 0.25\text{mm}$
MACHINE SURFACES Ra 3.2
ALL THREADS TO BE CLASS 6H / 6g
UNSPECIFIED GEOMETRIC TOLERANCES
TO LIE WITHIN THE TOLERANCE ZONE.



DRAWN	IV	CHECKED	
DATE	12.04.2001		
SCALE	1:1		
MATERIAL	PHOSPHOR BRONZE		
TITLE	CROSS SLIDE FEED NUTS		
PART N°.	ML100/512		

3RD