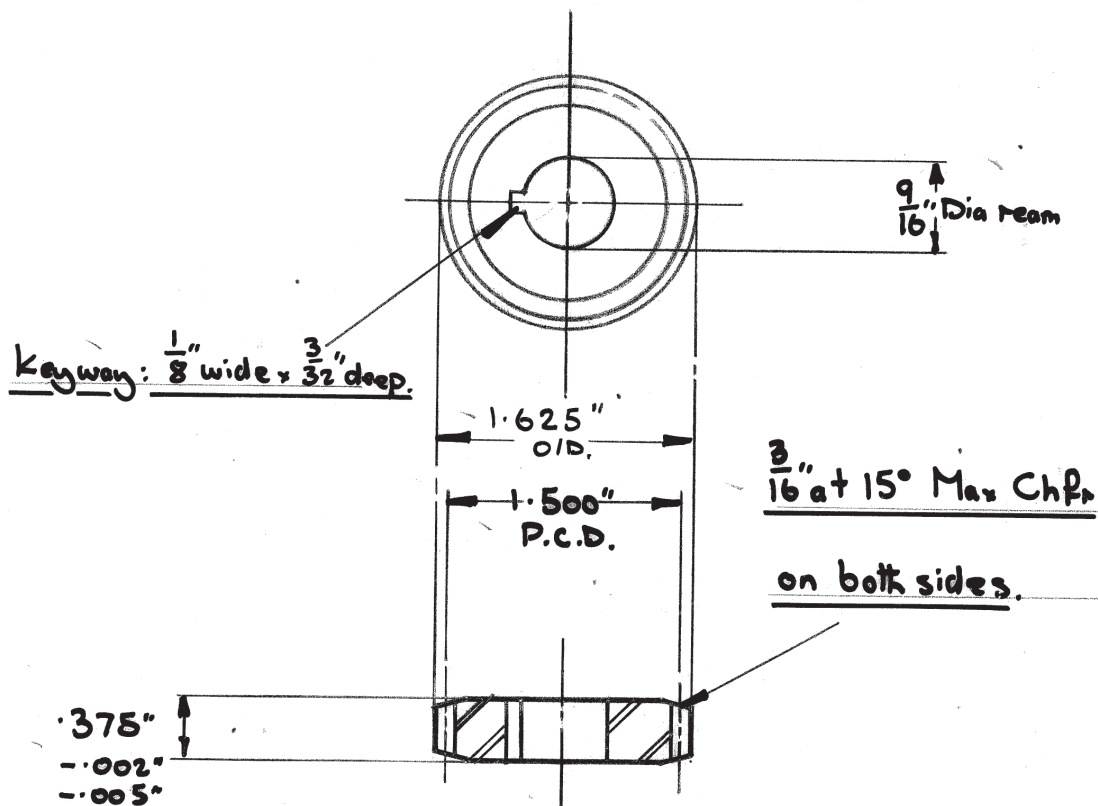


IF IN DOUBT ASK.

1303/66 8.3.66 B  
Redman 8.3.66 B.

STAMP'D.



24 teeth - 16 D.P. - 20° Pressure Angle


Whole tooth depth = .1348"

Machine all over

Special Stud gear For Reversing Bracket

5" Viceroy G.B. Lathe - Stud Gear.

DENFORD MACHINE TOOLS LTD.  
(INC) DENFORD SMALL TOOLS (DRUG) LTD.  
BRIGHOUSE,  
YORKSHIRE

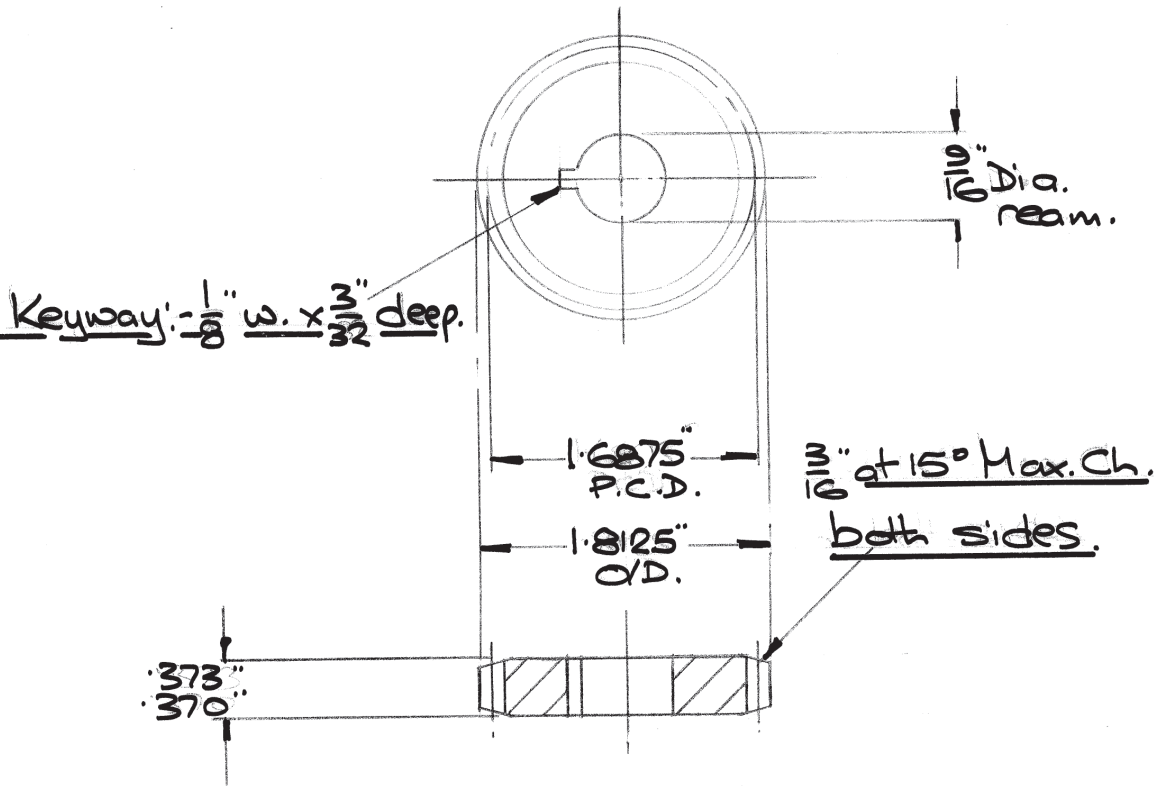
DRAWN M. H. Sowden  
CHECKED   
DATE 8.3.66

MAT. M.S.  
MAT SIZE 1 3/4" Dia x 5/8"  
FOR FILE 1 SCALE Full  
DRAWING NO. ML 115/948

IF IN DOUBT ASK.

ALTERATIONS

STAMP 'F'.



27 Teeth - 16 D.P. - 20° Press. L.

Whole tooth depth = .1348"

M/C all over.

(MK 2)

5" Viceroy G.B. Lathe - METRIC LATHE STUD GEAR - 27T.

LIMITS ON DIMENSIONS UNLESS OTHERWISE STATED.

ANGULAR  $\pm \frac{1}{2}^\circ$  3 PLACE DECIMAL  $\pm .005^\circ$

FRACTIONAL  $\pm .010$ " 4 PLACE DECIMAL  $\pm .0005$ "

DENFORD MACHINE TOOLS LTD.  
(Inc.) DENFORD SMALL TOOLS (BRIG) LTD.  
BRIGHOUSE,  
YORKSHIRE.

DRAWN

CHECKED

PASSED

DATE 18.9.68.

MAT. M.S.

MAT. SIZE 2" O/D x 5/8"

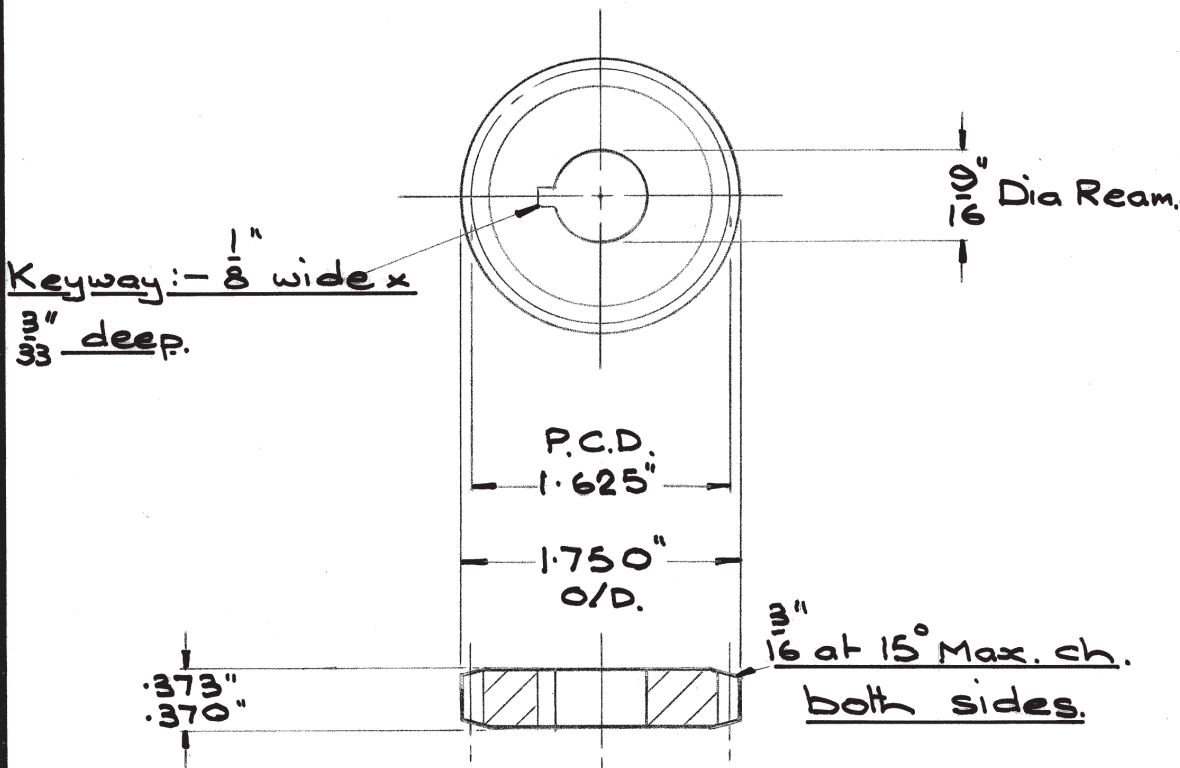
No. REQD. 1 SCALE FULL.

DRAWING No. M.L.115/948-C

IF IN DOUBT ASK.

ALTERATIONS

Stamp 'E'



26 Teeth - 16 D.P. - 20° Press L.

Whole tooth depth = .1348"

M/C all over.

LIMITS ON DIMENSIONS UNLESS OTHERWISE STATED.

ANGULAR  $\pm \frac{1}{2}^\circ$  3 PLACE DECIMAL  $\pm .005^\circ$

FRACTIONAL  $\pm .010$ " 4 PLACE DECIMAL  $\pm .0005$ "

(HK.2)

5" Viceroy G.B. Lathe - METRIC LATHE STUD GEAR-26T.

DENFORD MACHINE TOOLS LTD.  
(Inc.) DENFORD SMALL TOOLS (BRIG) LTD.  
BRIGHOUSE,  
YORKSHIRE.

DRAWN

R. Derlowski

CHECKED

PASSED

DATE

5.6.69.

MAT. M.S.

MAT. SIZE  $1\frac{7}{8}$ " O/D x  $5\frac{1}{8}$ "

No. REQD. 1

SCALE Full.

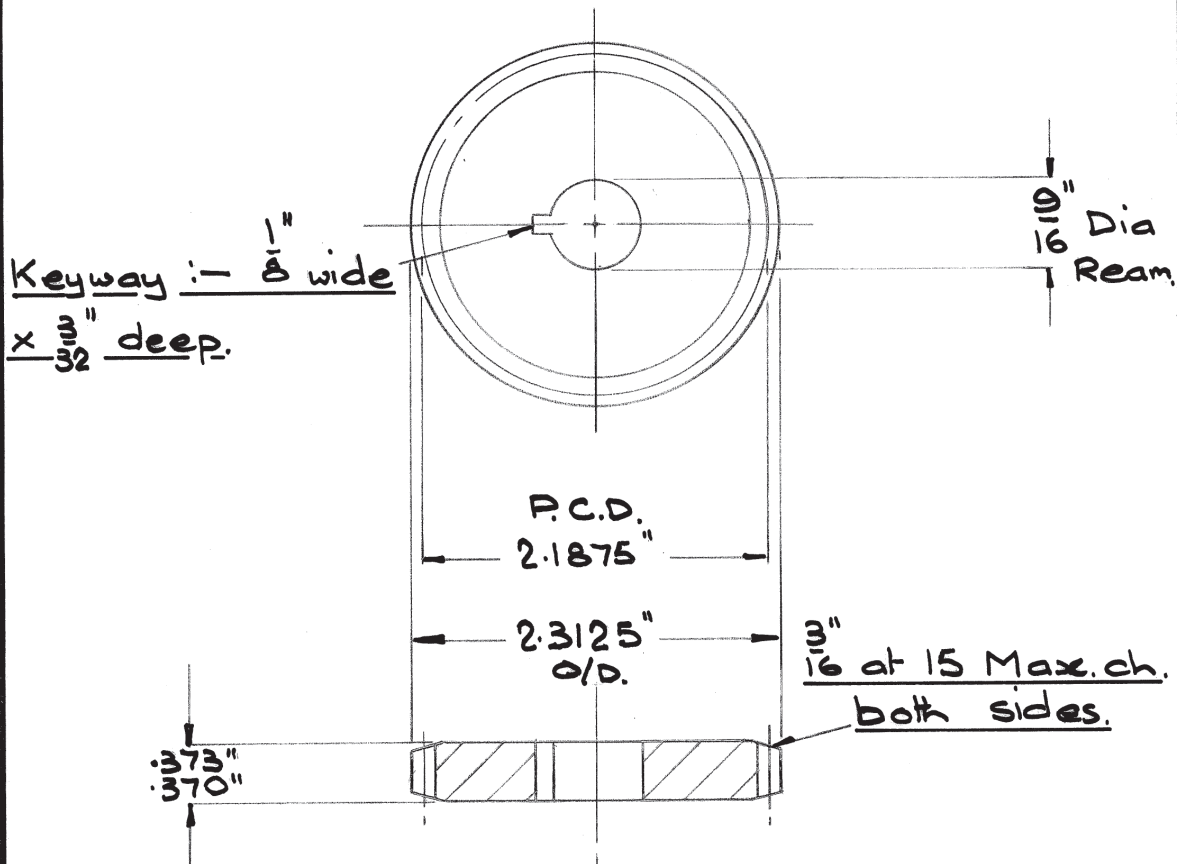
DRAWING No.

M.L.115/948-E

IF IN DOUBT ASK.

ALTERATIONS

Stamp 'G'



35 Teeth - 16 DP. - 20° Press.

Whole tooth depth = .1348"

M/C all over.

(MK.2)

5" Viceroy G.B. Lathe - METRIC LATHE STUD GEAR 35T

LIMITS ON DIMENSIONS UNLESS  
OTHERWISE STATED.

ANGULAR  $\pm 1^\circ$  3 PLACE DECIMAL  $\pm .005^\circ$

FRACTIONAL  $\pm .010$  4 PLACE DECIMAL  $\pm .0005$

DENFORD MACHINE TOOLS LTD.  
(Inc.) DENFORD SMALL TOOLS (BRIG) LTD.  
BRIGHOUSE,  
YORKSHIRE.

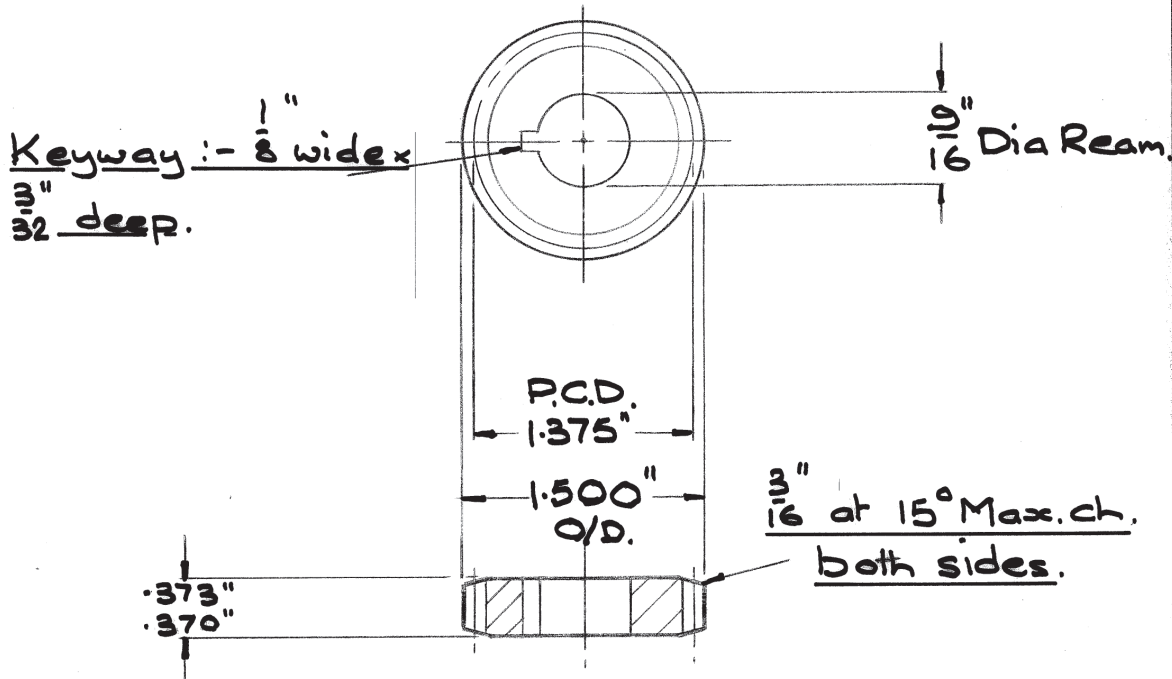
DRAWN  
R. Derdowski  
CHECKED [Signature]  
PASSED  
DATE  
5.6.69.

MAT. M.S.  
MAT. SIZE 2-7/16" O/D x 5-8"  
No. REQD. 1 SCALE Full  
DRAWING No.  
M.L.115/948-F.

IF IN DOUBT ASK.

ALTERATIONS

Stamp 'C'.



22 Teeth - 16 D.P. - 20° Press L.

Whole tooth depth = .1348"

M/c all over.

LIMITS ON DIMENSIONS UNLESS OTHERWISE STATED.

ANGULAR  $\pm \frac{1}{2}^\circ$  3 PLACE DECIMAL  $\pm .005^\circ$

FRACTIONAL  $\pm .010$ " 4 PLACE DECIMAL  $\pm .0005$ "

5' Viceroy G.B. Lathe - METRIC LATHE STUD GEAR 22T. (MK 2)

DENFORD MACHINE TOOLS LTD.  
(Inc.) DENFORD SMALL TOOLS (BRIG) LTD.  
BRIGHOUSE,  
YORKSHIRE.

DRAWN  
R. Derdowski  
CHECKED AP  
PASSED  
DATE  
4. 6. 69.

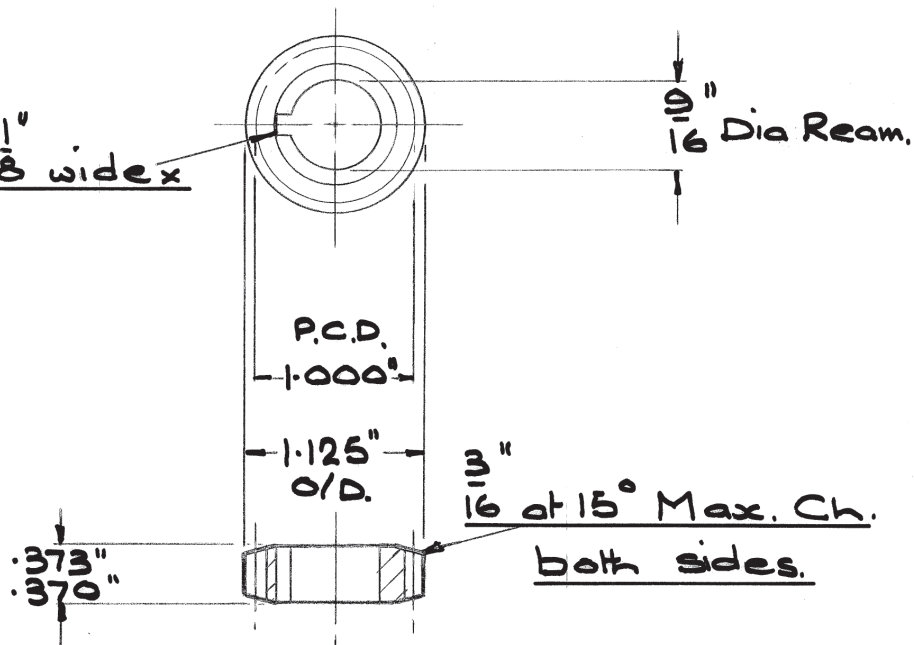
MAT. M.S.  
MAT. SIZE 1 5/8" O.D. x 5/8"  
No. REQD. 1 SCALE Full  
DRAWING No.  
M.L. 115/948-G

IF IN DOUBT ASK.

ALTERATIONS

Stamp 'A'

Keyway:-  $\frac{1}{8}$  wide x  
 $\frac{3}{32}$  deep.



16 Teeth - 16 D.P. - 20° Press L.

Whole tooth depth = .1348"

M/C all over.

LIMITS ON DIMENSIONS UNLESS  
OTHERWISE STATED.

ANGULAR  $\pm 1^\circ$  3 PLACE DECIMAL  $\pm .005^\circ$

FRACTIONAL  $\pm .010$ " 4 PLACE DECIMAL  $\pm .0005$ "

(MK2)

5" Viceroy G.B. Lathe - METRIC LATHE STUD GEAR 16T.

DENFORD MACHINE TOOLS LTD.  
(Inc.) DENFORD SMALL TOOLS (BRIG) LTD.  
BRIGHOUSE,  
YORKSHIRE.

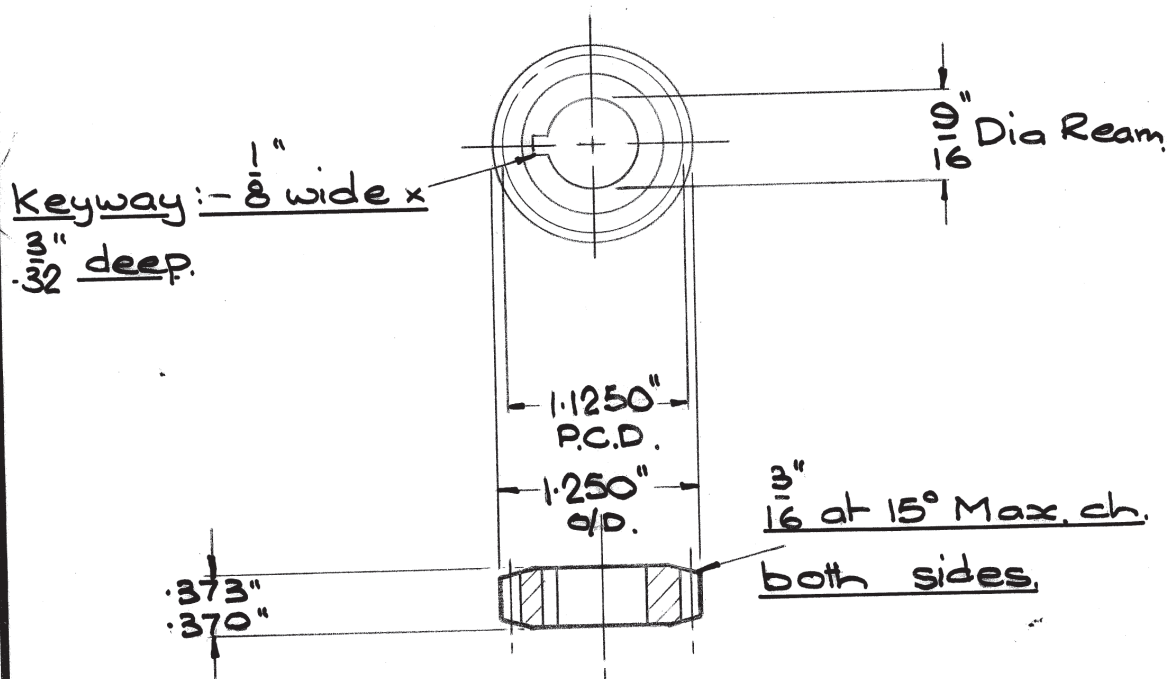
DRAWN  
R. Derdowski  
CHECKED  
PASSED  
DATE  
5.6.69.

MAT. M.S.  
MAT. SIZE 1 1/4" O/D x 5/8"  
No. REQD. 1 SCALE Full  
DRAWING No. M.L.115/948-H.

IF IN DOUBT ASK.

ALTERATIONS

Stamp 'B'.



18 Teeth - 16 D.P. - 20° Press Angle.

Whole tooth depth = .1348"

M/c all over.

SEE

ML.115/953.

(HK.2)

5" Viceroy G.B. Lathe - Metric Lathe Stud Gear 18T.

LIMITS ON DIMENSIONS UNLESS OTHERWISE STATED.

ANGULAR  $\pm \frac{1}{2}^\circ$  3 PLACE DECIMAL  $\pm .005^\circ$

FRACTIONAL  $\pm .010$ " 4 PLACE DECIMAL  $\pm .0005$ "

DENFORD MACHINE TOOLS LTD.  
(Inc.) DENFORD SMALL TOOLS (BRIG) LTD.  
BRIGHOUSE,  
YORKSHIRE.

DRAWN  
R. Dondowski  
CHECKED  
PASSED  
DATE  
4.6.69.

MAT. M.S.  
MAT. SIZE  $1\frac{3}{8}$  O/D x  $5\frac{1}{8}$ "  
No. REQD. 1 SCALE Full.  
DRAWING No.  
M.L.115/948-J.