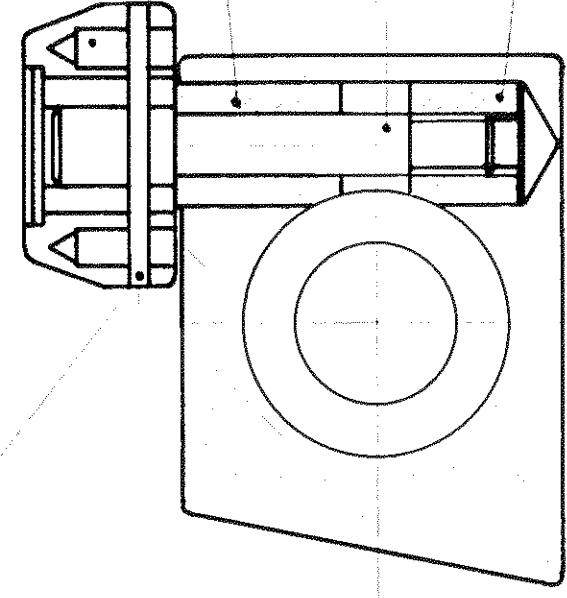


IF IN DOUBT ASK.

DRG. No.

GROOVE PIN  $\frac{1}{2}$ " DIA. X  $\frac{1}{2}$ " LONG 1 OFF.

ELESA CONTROL LEVER.  
REF: LBR 37/85/A10.-1 OFF.



SECTION ON A-A

MVS 100 710A

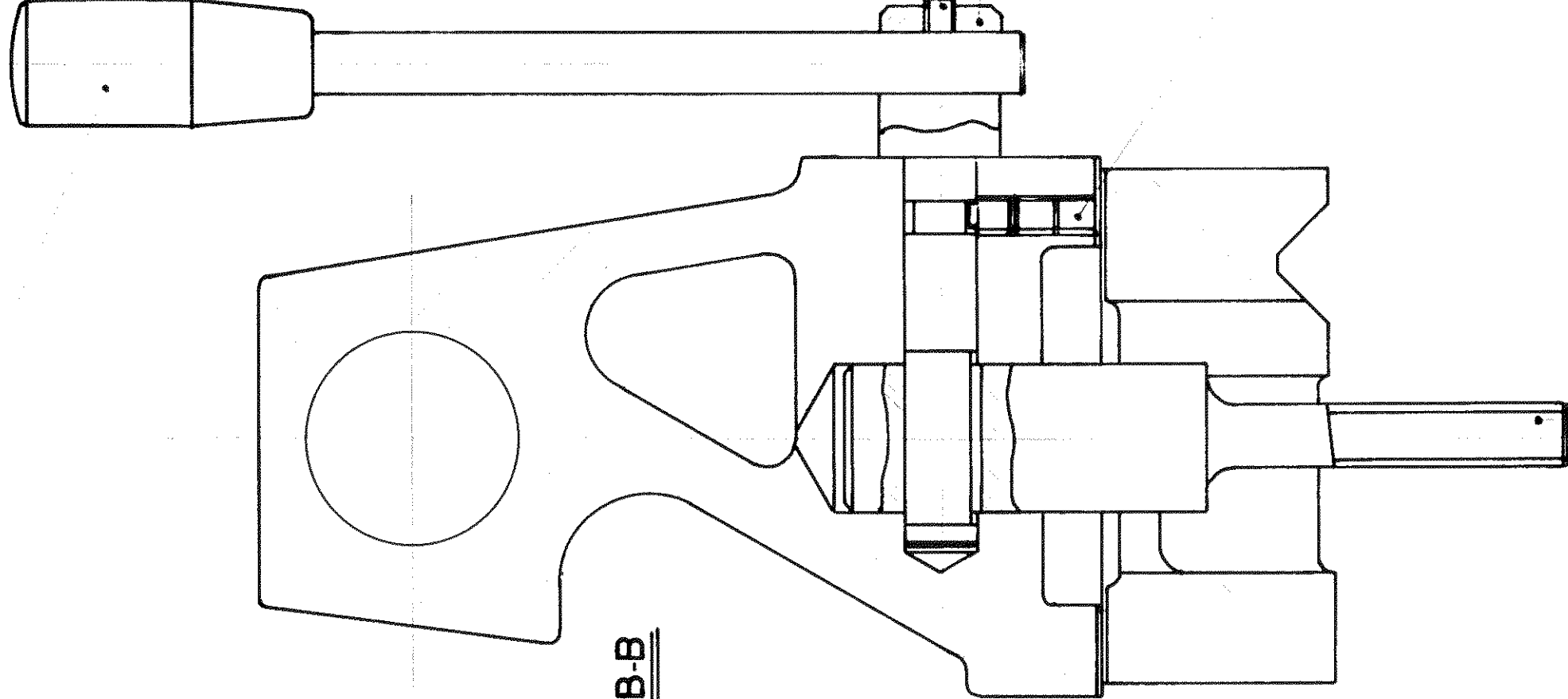
SP 171A

MVS 100 710B

ENGLISH METRIC  
MVS 100 705E MVS 100 705M

SP 172

ELESA LEVER ARM REF :  
BL 366/10 X 155 - 1 OFF.



SECTION ON B-B

GRUB SCREW  
M5 X 6 LONG  
KNURL CUP - 1 OFF

SP 147A

GRUB SCREWS  
M6 X 6 LONG  
DOG PT - 1 OFF  
KNURL CUP - 1 OFF

SP 148A

GROOVE PIN 3 DIA. X 45  
LONG - 1 OFF.

ADAM'S OILER  
REF: BO4 - 2 OFF

MVS 100 711

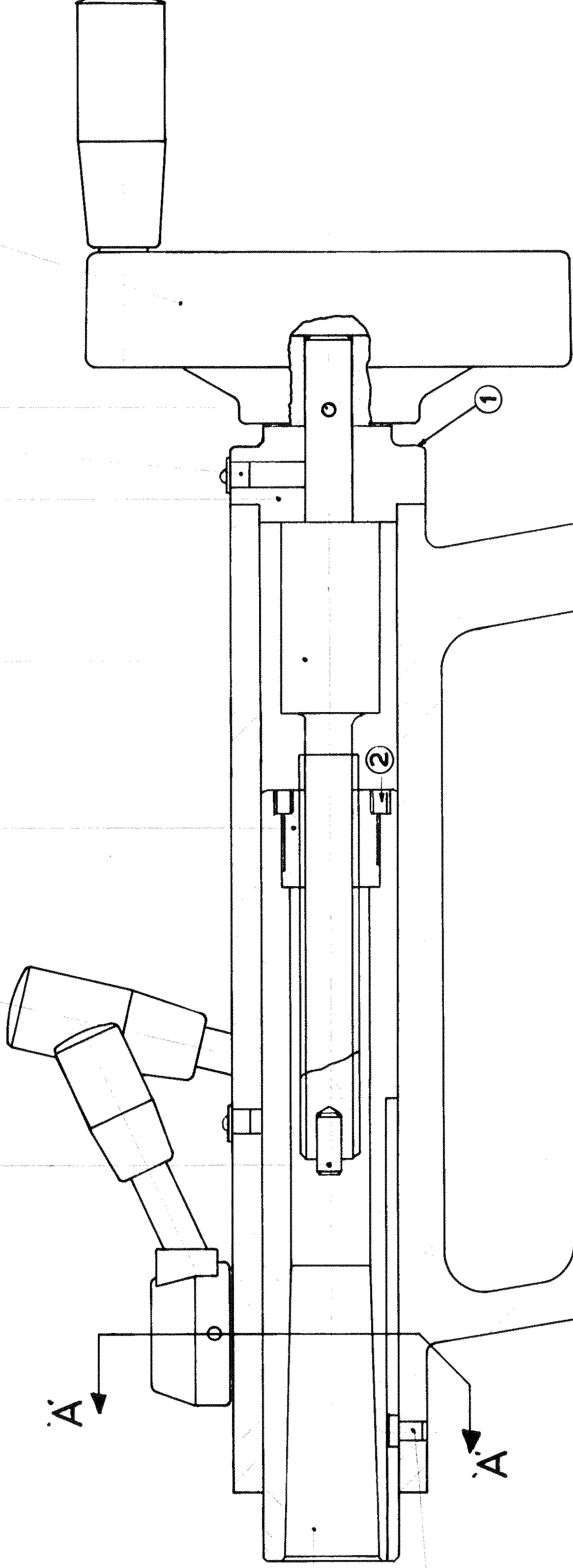
B

MVS 100 707

BVS 100 706

MVS 100 703

ELESA HANDWHEEL REF:  
VDO 125FP+1 - 1 OFF.



1

2

MVS 100 701

\* MVS 100 702

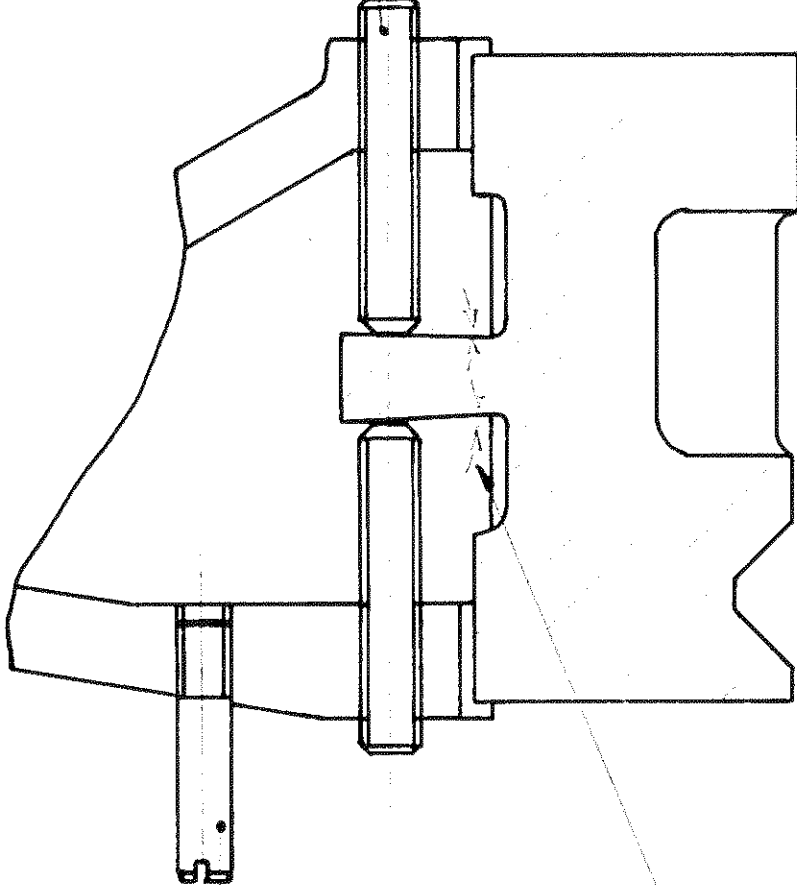
SP 135

1 SKT HD CAP SCREW  
M6 X 20 LONG - 4 OFF

2 GRUB SCREWS  
M5 X 6 LONG - 2 OFF

NY-LOC HEX NUT  
M10-1 OFF

B



SECTION ON C-C

GRUB SCREW  
M8 X 45 LONG.  
PLAIN CUP PT - 2 OFF

FILE TENON TO AN  
INVERTED TAPER  
AS SHOWN

MVS 100 712

\* 280 VS LATHE BVS 100/702  
5" LATHE ML 100/702A

NO	DESCRIPTION	CHD	APD	DATE
	ALTERATIONS			

DENFORD MACHINE TOOLS LTD. BRIGHOUSE, YORKSHIRE.

VICEROY 280 VS & 5" METAL LATHES — TAILSTOCK ARRANGEMENT.

LIMITS ON DIMENSIONS UNLESS  
OTHERWISE STATED.  
ANGULAR  $\pm \frac{1}{2}^{\circ}$  3 PLACE DECIMAL  $\pm .005^{\circ}$   
FRACTIONAL  $\pm .010^{\circ}$  4 PLACE DECIMAL  $\pm .0005^{\circ}$

MATL.	MATL. SIZE	NO. REQD.	MACHINE AT	GRIND AT	DRAWN	TRACED	CHECKED	APPROVED	DATE	SCALE

DRAWING No. BVS100/700