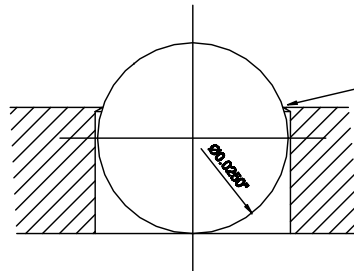
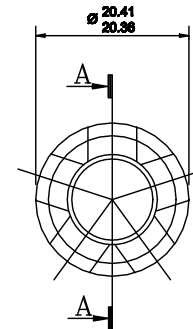
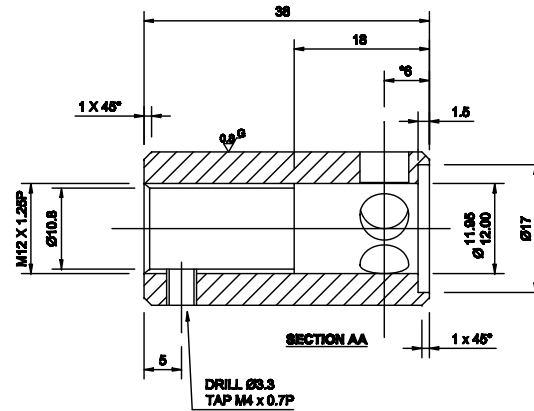


\* ALL FIVE HOLES MUST BE  
THE SAME DISTANCE FROM  
THE END




5 OFF Ø3.3 HOLES DO NOT DRILL THROUGH  
Ø0.250" STEEL BALLS MUST GO FLUSH WITH  
THE OUTSIDE DIAMETER, BUT NOT DROP THROUGH

(ISO 30 TOOLING)

GAS CARBORIZE 0.8mm DEEP  
GRIND AFTER HARDENING

**DENFORD**  
COMPUTERISED MACHINES AND SYSTEMS

UNLESS STATED OTHERWISE  
ALL DIMENSIONS ARE IN mm  
LIMITS ON DIMENSIONS: ANGULAR  $\pm 0.5^\circ$   
LINEAR / DIAMETRAL  $\pm 0.1$  mm  
MACHINE SURFACES  
ALL THREADS TO BE CLASS 6H / 6g  
UNSPECIFIED GEOMETRIC TOLERANCES  
TO LIE WITHIN THE TOLERANCE ZONE.

	ORIGINAL ISSUE			1	
N°.	ALTERATION			ISSUE	
DRAWN	IV	CHECKED	JMB		
DATE	16.03.99	 3 <sup>rd</sup>			
SCALE	2:1				
MATERIAL	EN8				
TITLE	DRAWBAR COLLET				
PART N°.	TR20/109				