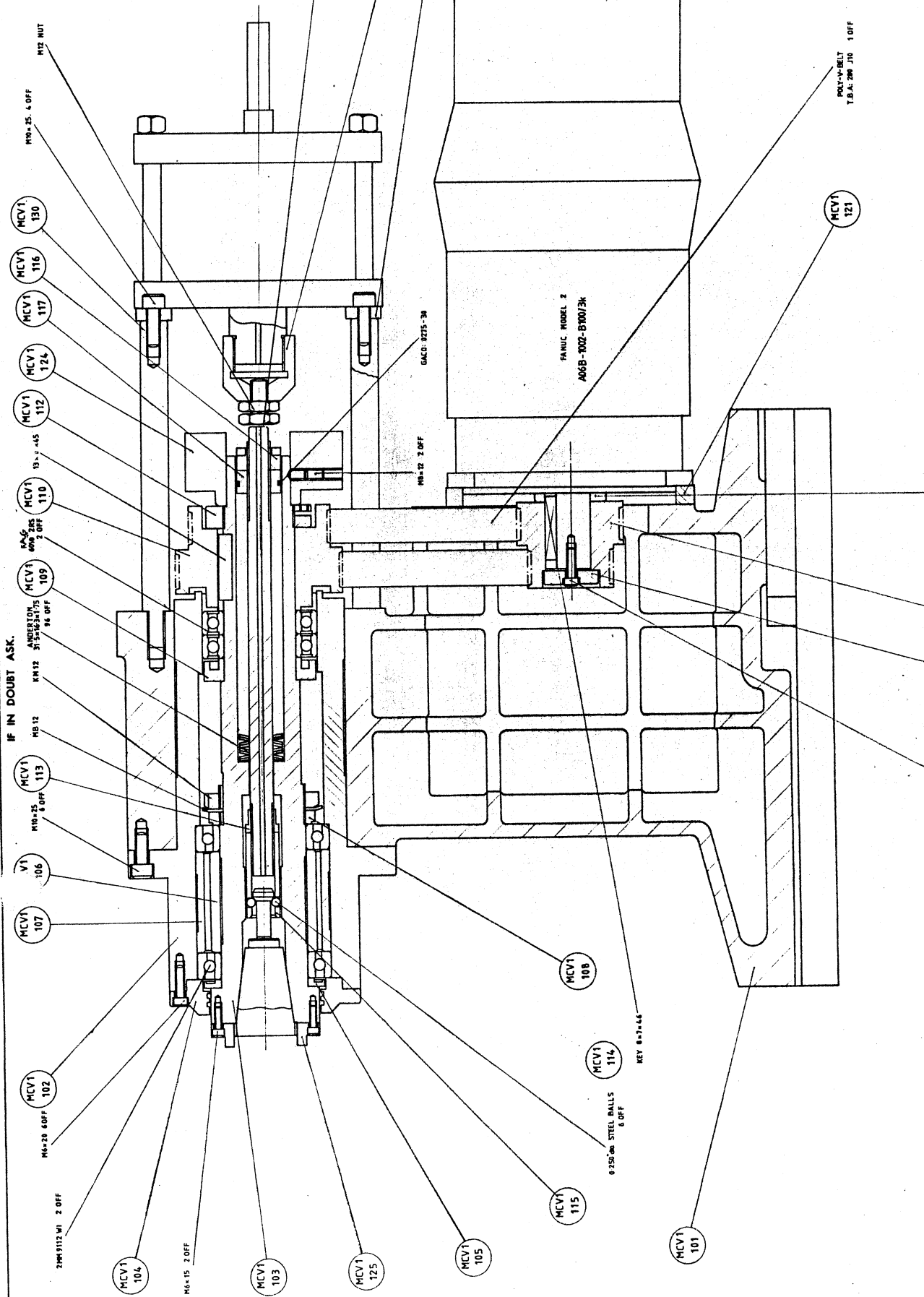


## ZEROTURN

ZT2/100	HEADSTOCK
200	BED/SADDLE DRIVE
300	SADDLE/CROSS SLIDE
400	CONTROL & DRIVES (FANUC)
500	SPINDLE DRIVE
600	CABINET
700	TAILSTOCK
800	TOOLING
900	SWarf CONVEYOR
1000	BAR FEED
1100	CHUCKING
1200	LUBRICATION SYSTEM
1300	TURRET COOLANT
1400	PARTS CATCHER
1500	TOOL PROBE

2000 NAMERATES.



<u>PART No.</u>	<u>DESCRIPTION</u>
V.1/101	MILLING HEAD
102	SPINDLE CARTRIDGE
103	MAIN SPINDLE (ISO 40)
104	SPINDLE NOSE CAP
105	BEARING COLLAR
106	INNER BEARING SPACER
107	OUTER BEARING SPACER
108	LOCKNUT SPACER
109	GREASE COLLAR
110	SPINDLE PULLEY
111	MOTOR PULLEY
112	LOCKNUT
113	COLLET LOCKNUT
114	DRAW BAR
115	DRAW BAR COLLET
116	PRELOAD NUT
117	SLIDE COLLAR
118	
119	RETAINING PLATE
120	SPINDLE PULLEY SPACER
121	MOTOR MOUTING PLATE
122	ADJUSTING BLOCK
123	ADJUSTING STOP
124	ORIENTATION BOSS
125	DRIVING DOGS
126	GIB STRIP RETAINER LH
127	GIB STRIP RETAINER RH
128	HEAD GIB STRIP
129	HEAD GIB STRIP
130	PILLAR
131	CYLINDER SUPPORT
132	M36 ADAPTOR
133	PUSH STUD
134	CYLINDER MICRO SWITCH BRACKET
135	CYLINDER MICRO SWITCH TRIP
136	
137	HEAD COVER
138	COOLANT NANIFOLD
139	LIMIT TRIP BRACKET
140	HEAD SENSOR BRACKET
141	SPINDLE SENSOR SPACER
142	TOP LIMIT BRACKET

<u>( DESCRIPTION</u>	<u>MANUFACTURER &amp; REF</u>	<u>COMPUTER No.</u>
BEARING	FAFNIR : 2MM9112 WI	(RHP B 7012x2TADUL)
BEARING	FAG : 6010 2RS	
LOCKNUT	FAG : KM 12	
TABWASHER	FAG : MB 12	
'O' RING	GACO : 0275-30	
DISC SPRING	ANDERTON:31.5x16.3x1.75	
STEEL BALL	0.250" Dia	
POLY'V'BELT	TBA : 280 J 10	

IF IN DOUBT ASK

SM32527

FAFNIR

MM25BS62DH

KMS MB5

MBx20④

S.M. 20327

MCV1  
204

MCV1  
202

MCV1  
208

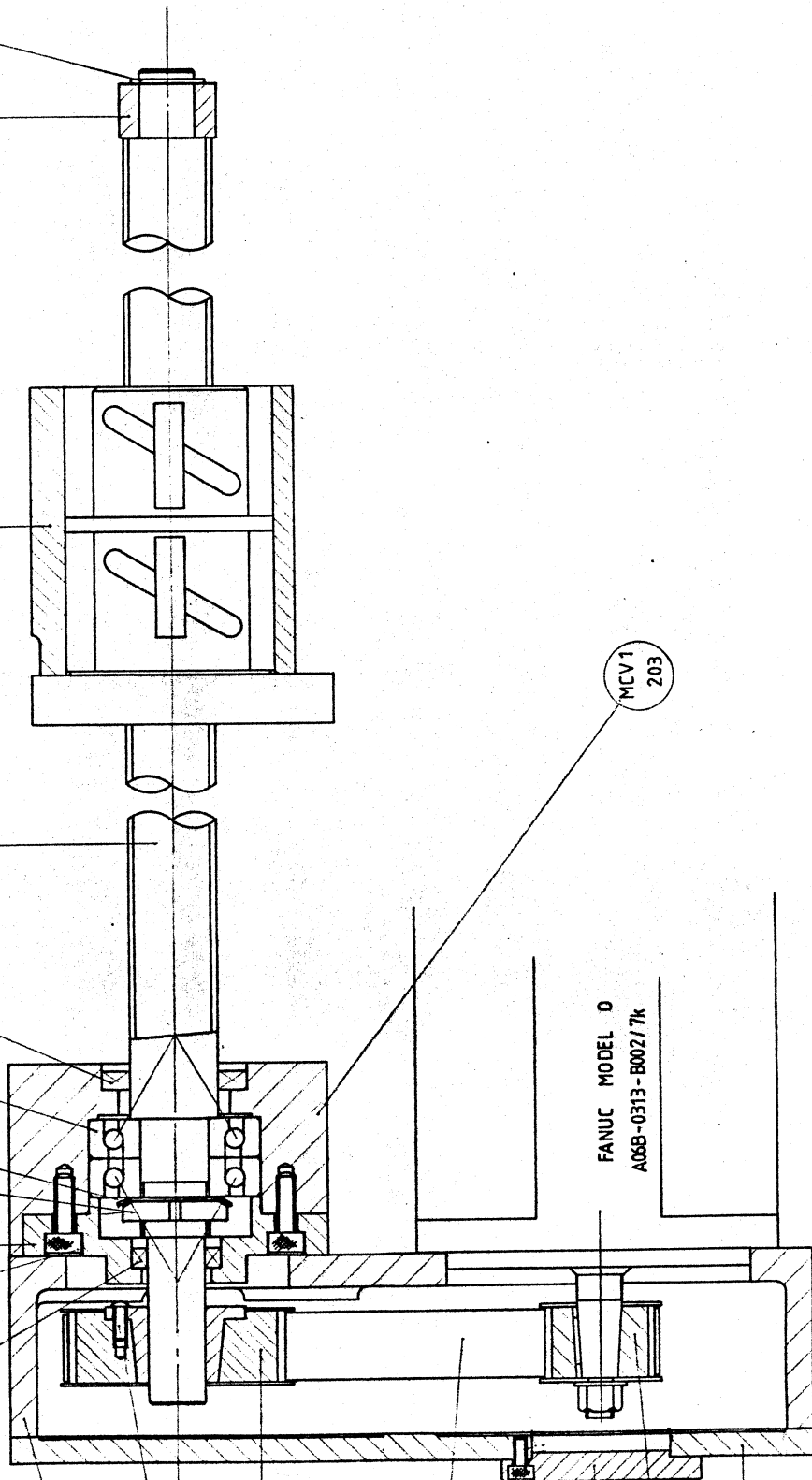
MCV1  
209

14.00-20M

④ N. HD. ④

FANUC MODEL D  
A06B-0313-B002/7k

MCV1  
203



PART No.DESCRIPTION

MCV.1/201	BASE
202	BALLSCREW & NUT
203	BALLSCREW BEARING HOUSING
204	END CAP
205	DRIVE HOUSING
206	DRIVE HOUSING LID
207	DRIVE RETAINING PLATE
208	BALLNUT HOUSING
209	BALLNUT END STOP
210 To Draw.	BALLSCREW COVER
211	BALLSCREW COVER SPIGOT
212 A	CROSS SLIDE DATUM TRIP
213 A	CROSS SLIDE MICRO SWITCH TRIP
214	REAR CROSS SLIDE COVER
215	REAR CROSS SLIDE COVER
216	HINGE COVER
217	FOOT SUPPORT
218	DATUM TRIP BRACKET
219	LIMIT TRIP BRACKET
220	CROSS SLIDE COVER ANGLE

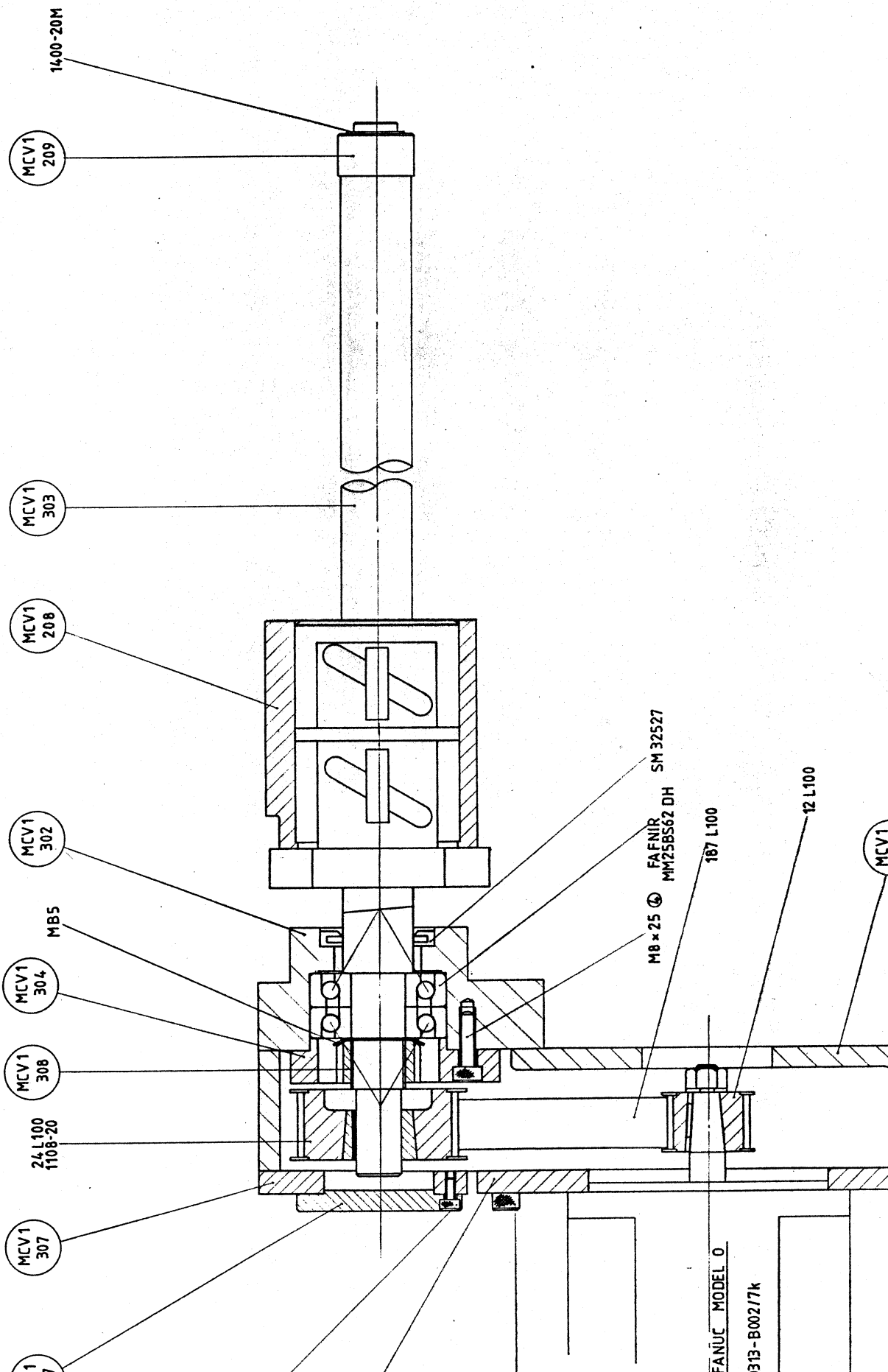
DESCRIPTIONMANUFACTURER & REFCOMPUTER No.

BEARING  
SEAL  
SEAL  
TIMING PULLEY  
" "  
TIMING BELT  
TAPERLOCK BUSH  
KNUT  
TAB WASHER  
CIRCLIP  
MICRO-SWITCH  
DIE CAST BOX  
FOOT

~~FAFNR. MMR25 BS62 DU~~  
SNFA : BS 225  
ANGUS : SM 32527  
ANGUS : SM 20327  
FENNER : 12 L100  
" : 24 L100  
" : 187 L100  
" : 1108-20  
FAG : KM 5  
FAG : MB 5  
ANDERTON : 1400/20  
BURGESS : 4CRQR  
R.S. 509 989 (MCV.1/309)  
SUNNEX . NO.1

509 989  
55501428

IF IN DOUBT ASK



FANUC MODEL O

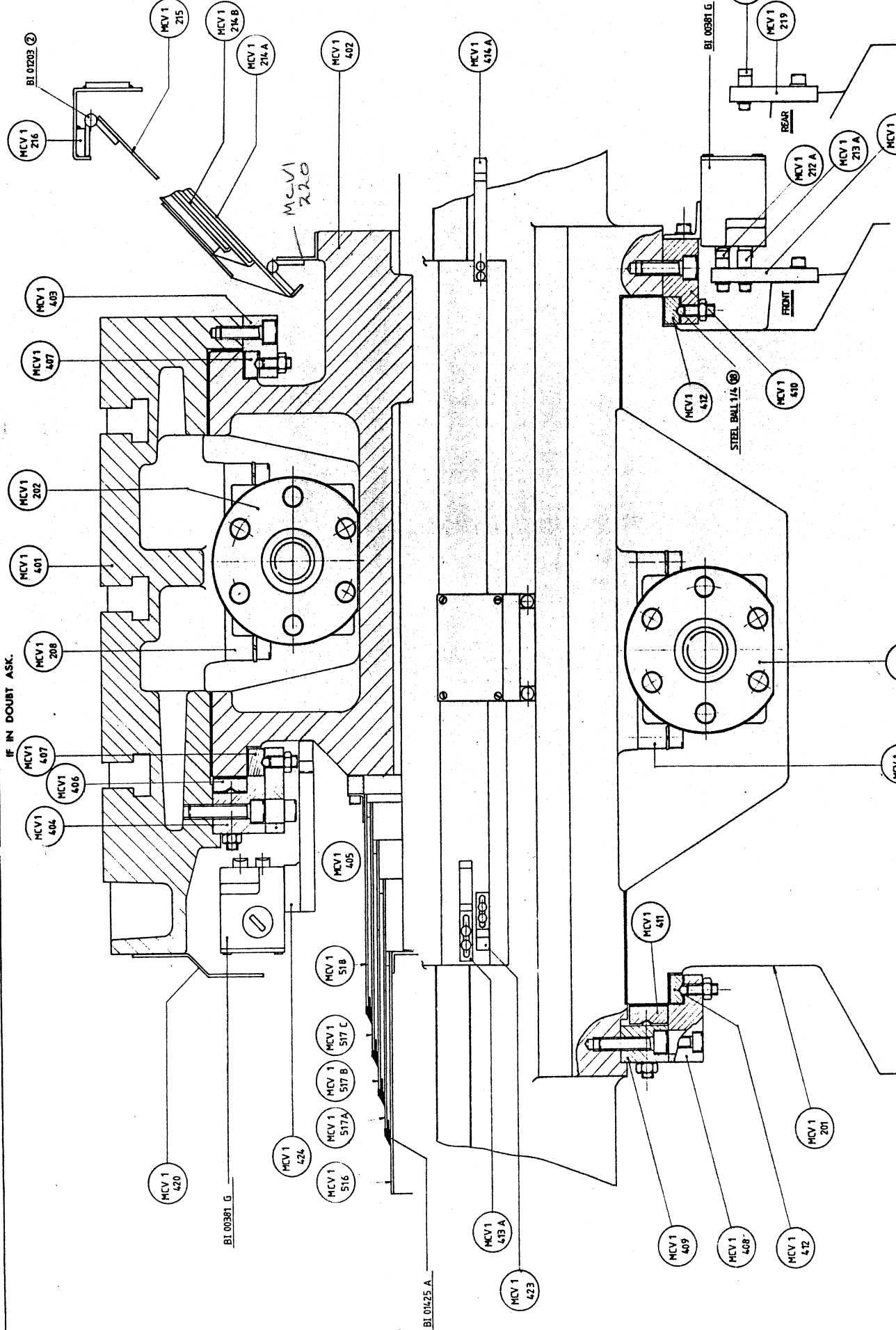
313-B002/7k

<u>PART No.</u>	<u>DESCRIPTION</u>
MCV.1/301	COLUMN
302	BEARING HOUSING
303	BALLSCREW & NUT
304	END COVER
305	DRIVE HOUSING
306	MOTOR PLATE
307	COVER PLATE
308	LOCKNUT
310 A	Z AXIS DATUM TRIP
311 A	Z AXIS MICRO SWITCH TRIP
312	COLUMN BOTTOM COVER
313	COLUMN COVER BLOCK
314	STABIFLEX BRACKET

MCV.1/207	DRIVE RETAINING PLATE
208	BALLNUT HOUSING
209	BALLSCREW END STOP

<u>DESCRIPTION</u>	<u>MANUFACTURER &amp; REF</u>	<u>COMPUTER No.</u>
BEARING	<del>FAGOR MM 25 BS 62 DW</del> SNFA : BS 225	
SEAL	ANGUS : SM 32527	
TABWASHER	FAG : MB 5	
CIRCLIP	ANDERTON : 1400/20	
TIMING PULLEY	FENNER : 12 L100	
" "	" : 24 L100	
TIMING BELT	" ; 187 L100	
DIE CAST BOX	R.S. 509-989 (MCV.1/309)	509-989
MICRO SWITCH	BURGESS : 4CRQR	
FLEXIBLE CONDUIT	HENNIG STABIFLEX TYPE 2.0(46")	

IF IN DOUBT ASK.





## PART No.

## DESCRIPTION

MCV.1/401	TABLE
402	CROSS SLIDE
403	GIB STRIP RETAINER RH
404	GIB STRIP RETAINER LH
405	GIB STRIP RETAINING PLATE
406	TABLE GIB STRIP LH
407	TABLE GIB STRIP
408	CROSS SLIDE GIB STRIP RETAINER LH
409	GIB STRIP RETAINER LH
410	GIB STRIP RETAINER RH
411	GIB STRIP LH
412	GIB STRIP
413A	TABLE DATUM TRIP
414A	TABLE MICRO-SWITCH TRIP
415	TABLE END COVER EXTENSION
416A/B	TABLE END COVERS
417	TABLE END COVER HOUSING
418	TABLE END COVER SUPPORT
<del>419</del>	<del>MICRO SWITCH BOX MOUNTING</del>
420	MICRO SWITCH COVER
421	<del>SLIDING COVER GUIDE</del>
422	X AXIS MOTOR COVER
423	TABLE TRIP BLOCK
424	MICRO SWITCH BRACKET
425 A/B	SLIDING GUARD SUPPORT

MCV.1/202	BALLSCREW & NUT
203	BALLSCREW BEARING HOUSING
204	END CAP
205	DRIVE HOUSING
206	DRIVE HOUSING LID
207	DRIVE RETAINING PLATE
208	BALLNUT HOUSING
209	BALLNUT END STOP

## DESCRIPTION

## MANUFACTURER &amp; REF

## COMPUTER No.

BEARING

SEAL

SEAL

TIMING PULLEY

TIMING PULLEY

TIMING BELT

LOCKNUT

TABWASHER

CIRCLIP

TAPERLOCK BUSH

MICRO-SWITCH

~~FENNER MM25836200~~

SNFA : BS 225

ANGUS : SM 32527

ANGUS : SM 20327

FENNER : 12L100

FENNER : 24L100

FENNER : 187L100

FAG : KM 5

FAG : MB 5

ANDERTON : 1400/20

FENNER : 1108-20

BURGESS : 4CROF

55500630

55500184A

55500184B

WIPER

ALC

55501405A

PART No.

MCV.1/501A

502

503A

504A

505A

506

507

508

509

510

511

512

513

514

515

516

517

518

519

520

521

522

523

524A

525

526

527

528

529

530A&amp;B

531

532

533

SP.201B

202

203

DESCRIPTION

CABINET BASE

FRONT PANEL

BACK PANEL RH.

BACK PANEL LH.

COOLANT TROUGH

BACK PANEL ANGLE

DOOR RAIL

DOOR STRIP

SLIDING DOOR

SIDE WINDOW

COOLANT TANK

SWARF DRAWER

BEDWAY END

BEDWAY COVER

BEDWAY SUPPORT

DOOR ROLLER

STUD

SPACER

PNEUMATIC COVER

FRONT PANEL SPLASH PLATE

CABINET BASE COVER PLATE

SIDE STRIP RH.

SIDE STRIP LH.

SECONDARY TANK

DOOR ROLLER AXLE

CABINET BASE SUPPORT

COOLANT RETURN TRAY

COOLANT RETURN RAIL

HANDLE

HANDLE SCREW

FIXING BLOCK

DESCRIPTION

WINDOWSEAL

WHEELS

HINGES

JUBILEE CLIP

WIPER

MANUFACTURER & REF.TENTE 2198 U00 045 P60  
SOUTHCOCOMPUTER No.

BI 00

BI 00

BI 00

BI 00

<u>PART No.</u>	<u>DESCRIPTION</u>
MCV.1/501A	CABINET BASE
502	
503	FRONT PANEL
504	SIDE PANEL RH.
505	SIDE PANEL LH.
506	COOLANT TROUGH
507	
508	DOOR RAIL
509	DOOR STRIP
510	SLIDING DOOR
511	SIDE WINDOW
512	
513	COOLANT TANK
514	
515	SWARF DRAWER
516	BEDWAY END
517	BEDWAY COVER
518	BEDWAY SUPPORT
519	DOOR ROLLER
520	STUD
521	SPACER
522	
523	PNEUMATIC COVER
524A	FRONT PANEL SPLASH PLATE
525	CABINET BASE COVER PLATE
526	SIDE STRIP RH.
527	SIDE STRIP LH.
528	SECONDARY TANK
529	DOOR ROLLER AXLE
530A&B	CABINET BASE SUPPORT
531	
532	COOLANT RETURN TRAY
533	COOLANT RETURN RAIL
SP.201B	HANDLE
202	HANDLE SCREW
203	FIXING BLOCK

<u>DESCRIPTION</u>	<u>MANUFACTURER &amp; REF.</u>	<u>COMPUTER No.</u>
WINDOWSEAL		BI 00
WHEELS	TENTE 2198 U00 045 P60	BI 00
HINGES	SOUTHCO	BI 00
JUBILEE CLIP		
WIPER		BI 00

MCV.1/501 A S

# CABINET BASE

502	
- 503 S	FRONT PANEL
- 504 S	SIDE PANEL RH
- 505 S	SIDE PANEL LH
- 506 S	COOLANT TROUGH (2)
507	
508 DEN.	DOOR RAIL 4
- 509 S	DOOR STRIP 8
510A	SLIDING DOOR (2)
511	SIDE WINDOW (2)
- 512	
- 513 S	COOLANT TANK.
- 514	
- 515 S	
- 516 S	SWarf DRAWER.
- 517 ABC S	BED WAY END
- 518 S	BED WAY COVER
519 DEN.	BED WAY SUPPORT
520 ✓	DOOR ROLLER (8)
521	STUD
- 522	SPACER
- 523	
- 524 S	PNEUMATIC COVER
- 525 S	FRONT PANEL SPLASH PLATE.
230 - 526 S	CABINET BASE COVER PLATE. (2)
240 - 527	SIDE STRIP RH.
528 S	SIDE STRIP LH.
529	SECONDARY TANK.
530 A & B	DOOR ROLLER AXLE. (3)
	CABINET BASE SUPPORT.

SP 201 CB	HANDLE 2
SP 202	HANDLE SCREW 4
SP 203	FIXING BLOCK 4

LIDOL SEAL

WHEELS

INGES

DOOR RAMP

TENTE 2198 U00 045 P60

SOUTHCO. (SMALL) 530A229

(BACK) 530A229

(2)

MCV, 1/501  
 502  
 503  
 504  
 505  
 506  
 507  
 508  
 509  
 510  
 511  
 512  
 513  
 514  
 515  
 516  
 517  
 518  
 519  
 520  
 521  
 522  
 523

CABINET BASE RH  
 CABINET BASE LH  
 FRONT PANEL  
 SIDE PANEL RH  
 SIDE PANEL LH  
 SIDE DOOR  
~~CONTROL HOUSING~~ (2)  
 DOOR RAIL  
 DOOR STRIP  
 SLIDING WINDOW (2)  
 SIDE WINDOW  
~~KICK~~  
~~CONTROL HOUSING BACKPLATE~~ See M  
 COOLANT TANK RH  
 COOLANT TANK LH  
 SWarf DRAWER (2)  
 BEDWAY END  
 BEDWAY COVER [1 set of 3]  
 BEDWAY SUPPORT  
 DOOR ROLLER (8)  
 STUD (8)  
 SPACER (8)  
 KICKPLATE  
 PNEUMATIC'S COVER

S.P. 201 C  
 S.P. 202  
 S.P. 203

HANDLE  
 HANDLE SCREW  
 Fixing BLOCK

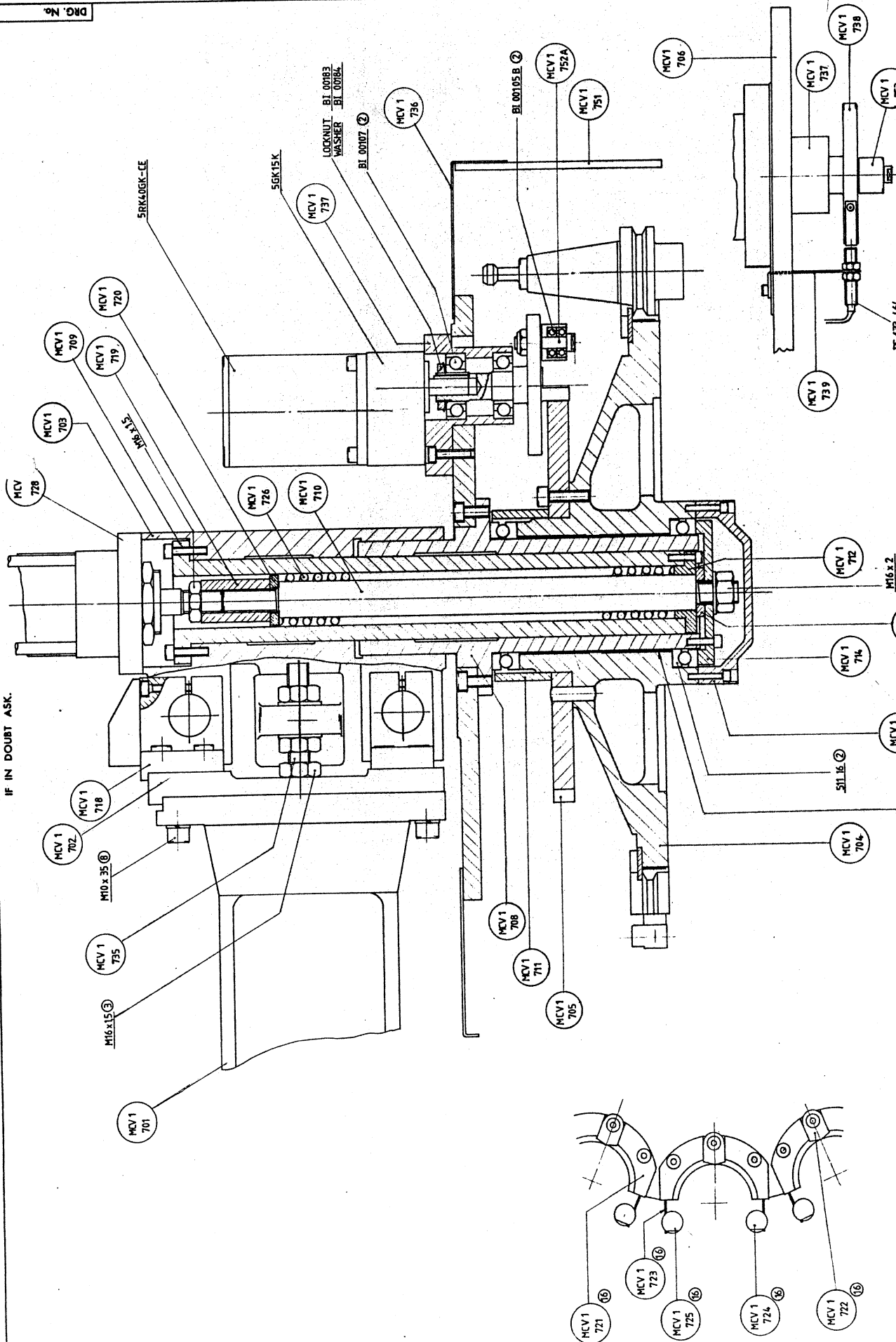
2  
 4  
 4

DESCRIPTION  
LUBRICATION PUMP  
METER UNIT  
SWIVELL ELBOW  
TUBING NUT  
8 WAY MANIFOLD  
BLANKING PLUG  
TEE CONNECTOR  
6 WAY MANIFOLD  
4mm DIA COPPER PIPE  
4mm DIA NYLON PIPE  
ELBOW  
ELBOW

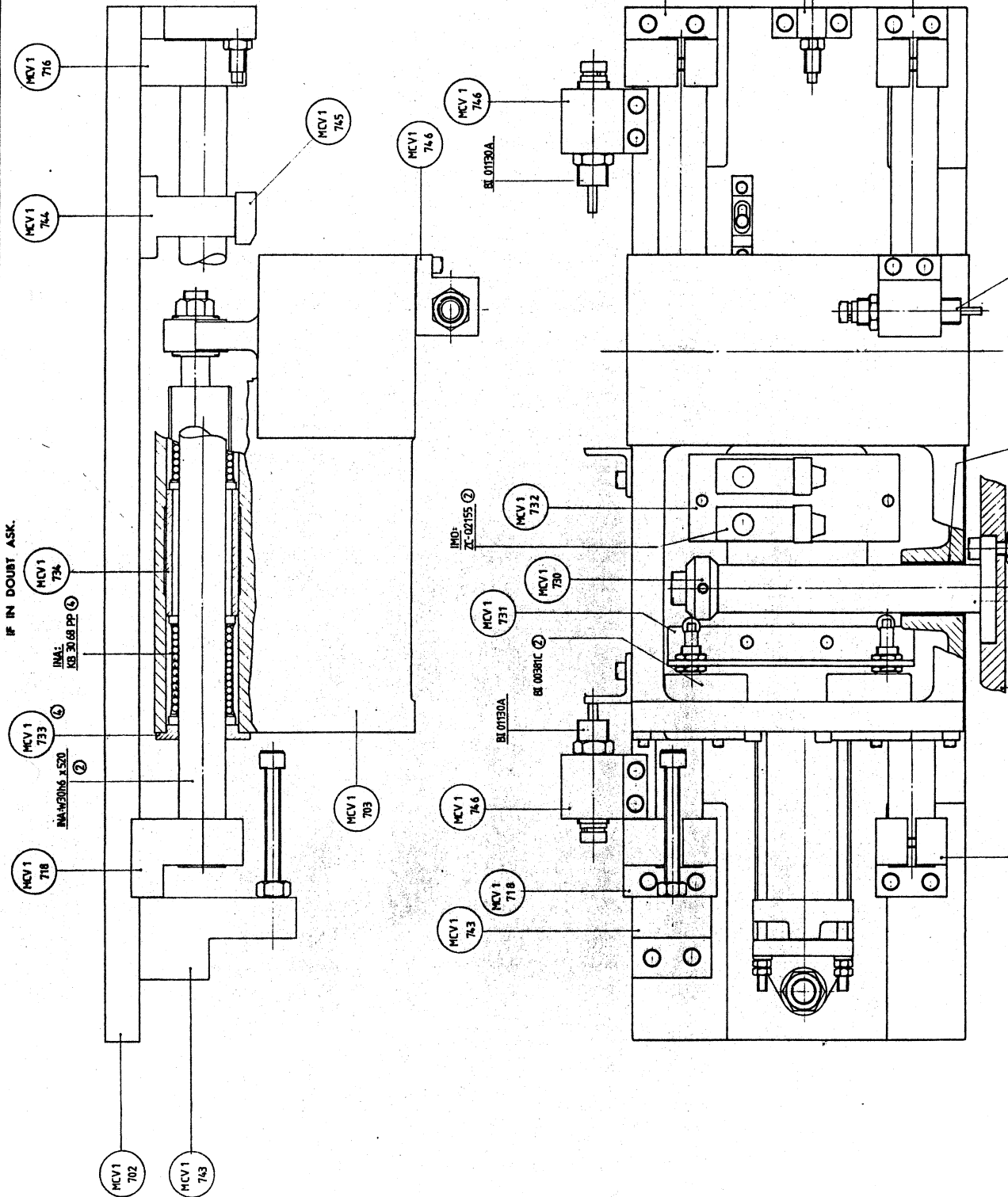
MANUFACTURER & REF.  
INTERLUBE LF 2510  
INTERLUBE 53462  
ENOTS 97 1114 02  
INTERLUBE LE 305  
INTERLUBE 114819  
INTERLUBE LE 405  
ENOTS 97 1514 02  
INTERLUBE 1114817  
YORKSHIRE IMPERIAL.  
INTERLUBE LE 90587  
INTERLUBE 53454

COMPUTER NO.  
55501123F  
55501129R  
55501123H  
55501123V  
55501123N  
55501128D  
55501123J  
55501126F  
55501123G  
55501123Y

IF IN DOUBT ASK.



**IF IN DOUBT ASK.**





<u>PART No.</u>	<u>DESCRIPTION</u>
MCV.1/701	ANGLE BRACKET
702	BACK PLATE
703	SADDLE
704	16 TOOL TURRET
705	INDEX PLATE
706	COVER PLATE
707	
708	SLIDE BUSH
709	QUILL
710	PUSH ROD
711	DUST COLLAR
712	SUPPORT BUSH
713	SPACER
714	BEARING COLLAR
715	CENTRE CAP
716	SLIDE WAY SUPPORT
717	SLIDE WAY SUPPORT RH
718	SLIDE WAY SUPPORT LH
719	CONNECTING COLLAR
720	SPRING COLLAR
721	TOOL HOLDER
722	TOOL HOLDER TENON
723	TOOL HOLDER SPRING
724	TOOL HOLDER ROLLER (RH)
725	TOOL HOLDER ROLLER (LH)
726	RETURN SPRING
<del>727</del>	<del>BRONZE BEARING</del> TURRET BUSH REPL LFB 8060
728	CYLINDER SUPPORT PLATE
729	GUIDE ROD
730	CAM
731	MICRO-SWITCH BRACKET
732	MICRO-SWITCH PLATE
733	END CAP
734	SPACER BUSH
735	ANCHOR STUD
736	TOOL TURRET COVER
737	INDEX HOUSING
738	INDEX DISC
739	SENSOR BRACKET
740	ATC REAR COVER
741	ATC COVER
742	A.T.C.STOP BLOCK
743	A.T.C.STOP BLOCK
744	A.T.C. KNOCK OFF BRACKET
745	A.T.C. KNOCK OFF BLOCK
746	SHOCK ABSORBER BRACKET
747	CONTROL VALVE BLOCK
748	SOLENOID VALVE BRACKET
749	MOUNTING BRACKET BLOCK
750	JUNCTION BLOCK
751	ATC GUARD
752	INDEX ROLLER SCREW
753	BEARING SLEEVE
754	SENSOR STRIP
755	TAPER PIN

DESCRIPTIONMANUFACTURER & REFCOMPUTER No.

AIR CYLINDER  
AIR CYLINDER  
LINEAR BEARING  
LINEAR SHAFT  
BEARING  
BEARING  
INDEX MOTOR  
INDEX GEARBOX  
INDEX ROLLER  
SENSOR  
LOCKNUT  
LOCKNUT  
MICRO-SWITCH  
" "  
SHOCK ABSORBERS  
LOCKNUT  
WASHER  
OILITE BUSH  
LINEAR BEARING

ENOTS : K2 369 55 0200  
ENOTS : K2 410 55 0115  
INA : KB 3068 PP  
INA : W30h6 x 520  
FAG : 511 16  
FAG : 7204 B  
ORIENTAL MOTORS: 5RK40GK-A2  
" " : 5GK 15K  
DWS : 600-2055  
RS 633-464  
ENOTS : 62 401 61 0000  
ENOTS : 48 0127 04  
BURGESS : 4CRQR  
IMO : ZC-Q2155  
ACE : ASM  $\frac{1}{4}$  x  $\frac{1}{2}$   
FAG : KM 4  
FAG : MB 4  
~~MANGANESE BRONZE : BM5 x 40~~  
TURCITE : LFB 8060

B1 0418  
633-464

MARTONAIR CYLINDERS

Rm/8063/125/G  
Rm/8050/200/R  
MP 1501/91 Locknuts.

27.7.88

LUBRICATOR  
L01 - 200 - OPRD

FILTER/REGULATOR  
B11 - 200 - M3MD

AIRLINE ADAPTOR  
8050 - 11  
(55501451R)

ELBOW ADAPTOR  
97 1116 11 9 OFF  
(5550129T)

90° SWIVEL ELBOW  
55501129K

6mm TUBING

PRESSURE SWITCH  
0140 02 000

STRAIGHT MALE ADAPTOR  
36 0530 11 9 OFF

BING NUT + SLEEVE  
36 0500 05 13 OFF  
36 0501 05

URE SOLENOID  
255 00 000 2 OFF

LOW CONTROL VALVE  
0361 00 000 4 OFF

A.T.C. (left/right)

TUBING NUT + SLEEVE  
36 0500 05 3 OFF  
36 0501 05 3 OFF

STRAIGHT MALE ADAPTOR  
36 0530 11 3 OFF

DRAWBAR  
down  
up

BLAST

6mm TUBING

A.T.C. (up/down)

SILENCER  
S/S2 8 OFF  
(5550129X)

TEE CONNECTOR  
36 0516 05 1 OFF

IF IN DOUBT ASK

DESCRIPTION	MANUFACTURER & REF.	COMPUTER NO.	
FILTER REGULATOR	ENOTS B11 200 M3MD	55501130J	1
LUBRICATER	ENOTS LO1 200 OPRD	55501130I	1
MINITURE SOLENOID	ENOTS X4 2255 50 110V	55501129Z	4
FLOW CONTROL VALVE	ENOTS 04 0361 00 000	55501128E	4
PRESSURE SWITCH	ENOTS 04 0140 02 000	55501451Y	1
ELBOW ADAPTOR	ENOTS 97 1114 11	55501129T	9
TEE CONNECTOR	ENOTS 36 0514 05	55501129U	1
<del>NON RETURN VALVE</del>	<del>ENOTS 04 0091 00 000</del>	<del>55501130H</del>	
TUBING NUT 8mm	ENOTS 36 0500 05	55501130G	
TUBING SLEEVE 8mm	ENOTS 36 0501 05	55501130F	
STRAIGHT MALE ADAPTOR	ENOTS 36 0530 11	55501130E	
NIPPLED CONNECTOR	ENOTS 36 0633 02	55501130D	
SILENCER	ENOTS S/S2	55501129X	
8mm DIA NYLON TUBE		55501130K	
6mm DIA NYLON TUBE		55501110C	
TUBING NUT 6mm	ENOTS 36 0500 04	55501451P	
TUBING SLEEVE 6mm	ENOTS 36 0501 04	55501451Q	
SWIVEL ELBOW 6mm	ENOTS 97 1114 04	55501129H	

POWER DOOR

PRESSURE REGULATOR  
PRESSURE GAUGE  
MINITURE SOLENOID  
SILENCER  
STRAIGHT ADAPTOR 1/8-6"  
TUBING NUT 6mm  
TUBING SLEEVE 6mm  
TUBING NUT 8mm  
TUBING SLEEVE 8mm  
TEE CONNECTOR

ENOTS R06 100 RNKD  
ENOTS 18 013 013  
ENOTS 14 1135 50 110V  
ENOTS S/S2  
ENOTS 36 0530 04  
ENOTS 36 0500 04  
ENOTS 36 0501 04  
ENOTS 36 0500 05  
ENOTS 36 0501 05  
ENOTS 36 0514 05

55501451U  
55501451A  
55501128G  
55501129X  
55501129D  
55501451P  
55501451Q  
55501130G  
55501130F  
55501129U

POWER CHUCK

MINITURE SOLENOID  
SILENCER  
STRAIGHT ADAPTOR  $\frac{1}{4}$ "-8  
TUBING NUT 8mm  
TUBING SLEEVE 8mm

ENOTS  
ENOTS S/S2  
ENOTS 36 0530 11  
ENOTS 36 0500 05  
ENOTS 36 0501 05

55501  
55501129X  
55501130E  
55501130G  
55501130F

PART No.DESCRIPTION

MCV1/801A	CONTROL HOUSING
802A	CONTROL HOUSING BACKPLATE
804B	PIVOT PIN
805B	PENDANT SUPPORT
806B	PENDANT ARM
808	SAREL BOX CUTOUT
809	ELECTRICAL BOX SUPPORT
811	ORIENTATION BOARD BRACKET L.H.
812	ORIENTATION BOARD BRACKET
813	PIVOT BUSH
814	CIRCLIP COLLAR
815A	HINGE PLATE
816	PLINTH BRACKET
817	GAITER RETAINING PLATE
818	GAITER RETAINING PLATE
819	GAITER RETAINING PLATE
820	GAITER RETAINING PLATE
821	SAREL BOX SUPPORT

SP.201B

202

203

208

HANDLE

HANDLE SCREW

FIXING BLOCK

AXIS DRIVE PLINTH

AC2/626A

SPINDLE DRIVE PLINTH

DESCRIPTIONMANUFACTURER & REFCOMPUTER No.

ENCLOSURE  
CHASSIS PLATE  
BELLOW

CASTOR

SAREL : 18.15.12.4  
SAREL : 18.CPA.15.12  
MACHINECENTRE GARTER  
BOREHAM BIS 702  
TENTE 2477 DHKO75 P30

BI 00420V  
BI 00420W  
BI 01427G  
BI 01445I

MCV: 1 / 801

802

803A DEN

804A DEN

805A DEN

806A DEN

~~807~~ ~~den~~

808

809 -

810

811

812

~~813~~ 816

SP. 201B.

202

203

SP 208

CONTROL HOUSING

CONTROL HOUSING BACK PLATE

PENDANT BEARING HOUSING

PENDANT PIVOT PIN

PENDANT SUPPORT

PENDANT ARM

~~AXIS DRIVE PLINTH~~

SAREL BOX CUTOUTS

ELECTRICAL BOX SUPPORT

PENDANT BASEPLATE

ORIENTATION BOARD BRACKET L.H.

ORIENTATION BOARD BRACKET R.H.

PLINTH BRACKET

AXIS DRIVE PLINTH

AC. 2 / 626

SPINDLE DRIVE PLINTH

SAREL BOX : 18.15.12.4

55500420 V

CHASSIS PLATE : 18.CPA 15.12

55500420 W

THRUST BEARING : NADELLA AX 30 47

THRUST PLATE : NADELLA CP 30 47



~~ESR~~  
 • MCV.1/801 CONTROL HOUSING.  
 802 CONTROL HOUSING BACKRATE  
 803 PENDANT PIVOT BUSH.  
 804 PENDANT PIVOT PIN  
 805 PENDANT SUPPORT  
 806 PENDANT ARM.  
 807 AXIS DRIVE PLINTH.  
 808 SAREL BOX CUTOUTS  
 809 ELECTRICAL BOX Support.

AC, 2/626 SPINDLE DRIVE PLINTH.

SAREL BOX : 18.15.12.4. 555 00 420 V  
 CHASSIS RATE : 18. CPA 15.12 . 555 00 420 W

PART No.DESCRIPTION

MCV.1/901  
902  
903  
904  
905  
906  
907

COUNTERWEIGHT  
COUNTERWEIGHT ARM  
AXLE  
SPROCKET  
CHAIN ANCHOR BOLT  
CHAIN ANCHOR BOLT  
COUNTERWEIGHT SUPPORT PLATE

DESCRIPTIONMANUFACTURER & REFCOMPUTER No.

BEARING  
ROLLER CHAIN

RNA : 4902  
SINGLE/0.750" x 1050

<u>PART No.</u>	<u>DESCRIPTION</u>
MCV1/1001	ENCODER BRACKET
1002	SPACER
1003	ENCODER PULLEY
1004	SPINDLE ENCODER PULLEY
1005	ORIENTATION BOSS
1006	HEAD COVER

<u>DESCRIPTION</u>	<u>MANUFACTURER &amp; REF</u>	<u>COMPUTER No.</u>
TIMING BELT ENCODER	FENNER 240L050 FANUC	A86L-0027-001/0

CH. 451	WHITE LETTERS.	1
CH. 438 ✓		1
CH. 269 ✓		3
CH. 363. -		1
CH. 445 ✓		1
CH. 446 ✓		1
CH 473	A.T.C. NUMBERS	1 set

CH. 435A OPERATORS PANEL.

1